

Anti-GLUCOSE OXIDASE (GOAT) Antibody
Glucose Oxidase Antibody
Catalog # ASR3900**Specification****Anti-GLUCOSE OXIDASE (GOAT) Antibody - Product Information**

Host	Goat
Conjugate	Unconjugated
Target Species	Aspergillus niger
Reactivity	Aspergillus niger
Clonality	Polyclonal
Application	WB, IHC, E, I, LCI
Application Note	Anti-Glucose Oxidase has been tested in western blot and is suitable for use in ELISA and immunohistochemistry. Specific conditions for reactivity should be optimized by the end user.
Physical State	Liquid (sterile filtered)
Buffer	0.02 M Potassium Phosphate, 0.15 M Sodium Chloride, pH 7.2
Immunogen	Glucose Oxidase [Aspergillus niger]
Preservative	0.01% (w/v) Sodium Azide

Anti-GLUCOSE OXIDASE (GOAT) Antibody - Additional Information**Purity**

Anti-Glucose Oxidase Antibody is an IgG fraction antibody purified from monospecific antiserum by a multi-step process which includes delipidation, salt fractionation and ion exchange chromatography followed by extensive dialysis against the buffer stated above. Assay by immunoelectrophoresis resulted in a single precipitin arc against anti-Goat Serum as well as purified and partially purified Glucose Oxidase [Aspergillus niger]. Cross reactivity against Glucose Oxidase from other tissues and species may occur but have not been specifically determined.

Storage Condition

Store Glucose Oxidase Antibody at -20° C prior to opening. Aliquot contents and freeze at -20° C or below for extended storage. Avoid cycles of freezing and thawing. Centrifuge product if not completely clear after standing at room temperature. This product is stable for several weeks at 4° C as an undiluted liquid. Dilute only prior to immediate use.

Precautions Note

This product is for research use only and is not intended for therapeutic or diagnostic applications.

Anti-GLUCOSE OXIDASE (GOAT) Antibody - Protein Information

Name gox

Cellular Location

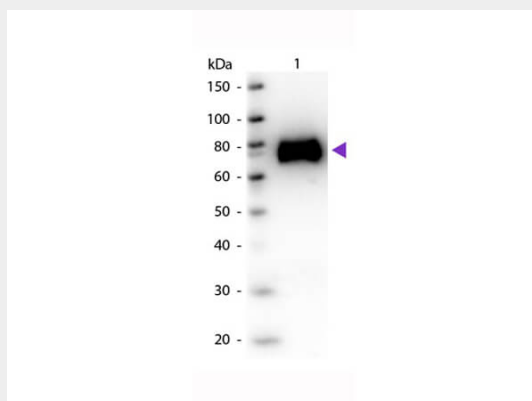
Secreted.

Anti-GLUCOSE OXIDASE (GOAT) Antibody - Protocols

Provided below are standard protocols that you may find useful for product applications.

- [Western Blot](#)
- [Blocking Peptides](#)
- [Dot Blot](#)
- [Immunohistochemistry](#)
- [Immunofluorescence](#)
- [Immunoprecipitation](#)
- [Flow Cytometry](#)
- [Cell Culture](#)

Anti-GLUCOSE OXIDASE (GOAT) Antibody - Images



Western Blot of Goat anti-Glucose Oxidase antibody. Lane 1: Glucose Oxidase. Load: 50 ng per lane. Primary antibody: Glucose Oxidase antibody at 1:1,000 for overnight at 4°C. Secondary antibody: Peroxidase goat secondary antibody (p/n 605-4302) at 1:40,000 for 30 min at RT. Block: (p/n MB-070) for 30 min at RT. Predicted/Observed size: 65-70 kDa, 65-70 kDa for Glucose Oxidase. Other band(s): None.

Anti-GLUCOSE OXIDASE (GOAT) Antibody - Background

Glucose Oxidase enzyme is widely applied for the determination of glucose in body fluids and in removing residual glucose or oxygen from foods and beverages. Furthermore, glucose oxidase-producing molds such as aspergillus and penicillium species are used for the biological production of gluconic acid.