

**Anti-Human IL-6 (RABBIT) Antibody**  
**IL-6 Antibody**  
**Catalog # ASR3863**

**Specification**

---

**Anti-Human IL-6 (RABBIT) Antibody - Product Information**

Host	Rabbit
Conjugate	Unconjugated
Target Species	Human
Reactivity	Human
Clonality	Polyclonal
Application	WB, IHC, E, IP, I, LCI
Application Note	IL-6 antibody has been tested in western blot. This antibody is suitable for use in neutralizations, ELISA, radioimmunoassay, and immunoprecipitation. Reactivity in other immunoassays is unknown. Expect ~23.7kDa. In Western blot analysis of natural cell products or human body fluids, multiple bands of IL-6 will appear due to the variable amount of glycosylation on the molecule. For immunoblot use the supernatants or lysates of $2 \times 10^6$ endotoxin-stimulated human peripheral blood mononuclear cells (PBMC). PBMC are stimulated for 24 hours with 1% (v/v) human serum plus 10ng/mL E. coli LPS. For immunoprecipitation, pre-clearing with a non-specific rabbit IgG is helpful to reduce background. The antiserum is useful for neutralization of human of IL-6 activity in bioassays. For neutralization, incubate the sample with a 1:400 dilution of the antiserum for at least 4 hours before being tested. A control of similarly diluted normal rabbit IgG (heat inactivated) is recommended. In neutralization experiments in vitro, this antibody does not result in enhanced activity of IL-6. However, because antibodies to IL-6 may act as a soluble receptor in vivo, some antibodies to IL-6 act as carriers and enhance IL-6 activity.
Physical State	Liquid (sterile filtered)
Buffer	0.02 M Potassium Phosphate, 0.15 M Sodium Chloride, pH 7.2
Immunogen	This whole rabbit serum was prepared by repeated immunizations with recombinant human IL-6 produced in E.coli.

**Anti-Human IL-6 (RABBIT) Antibody - Additional Information**

**Gene ID** 3569

**Other Names**  
3569

**Purity**

Anti-IL-6 antiserum detects recombinant and native IL-6 present in body fluids and cell supernatants in various assays (ie. IL-1 stimulated IL-6 production from fibroblasts). This product has minimal reactivity with mouse IL-6.

**Storage Condition**

Store vial at -20° C prior to opening. Aliquot contents and freeze at -20° C or below for extended storage. Avoid cycles of freezing and thawing. Centrifuge product if not completely clear after standing at room temperature. This product is stable for several weeks at 4° C as an undiluted liquid. Dilute only prior to immediate use.

**Precautions Note**

This product is for research use only and is not intended for therapeutic or diagnostic applications.

**Anti-Human IL-6 (RABBIT) Antibody - Protein Information**

**Name** IL6 ([HGNC:6018](#))

**Synonyms** IFNB2

**Function**

Cytokine with a wide variety of biological functions in immunity, tissue regeneration, and metabolism. Binds to IL6R, then the complex associates to the signaling subunit IL6ST/gp130 to trigger the intracellular IL6-signaling pathway (Probable). The interaction with the membrane-bound IL6R and IL6ST stimulates 'classic signaling', whereas the binding of IL6 and soluble IL6R to IL6ST stimulates 'trans- signaling'. Alternatively, 'cluster signaling' occurs when membrane- bound IL6:IL6R complexes on transmitter cells activate IL6ST receptors on neighboring receiver cells (Probable).

**Cellular Location**

Secreted.

**Tissue Location**

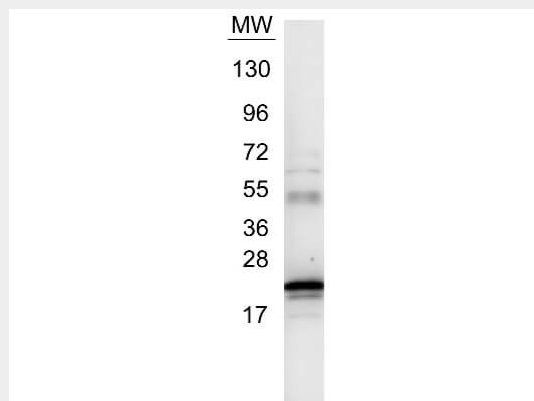
Produced by skeletal muscle.

**Anti-Human IL-6 (RABBIT) Antibody - Protocols**

Provided below are standard protocols that you may find useful for product applications.

- [Western Blot](#)
- [Blocking Peptides](#)
- [Dot Blot](#)
- [Immunohistochemistry](#)
- [Immunofluorescence](#)
- [Immunoprecipitation](#)
- [Flow Cytometry](#)
- [Cell Culture](#)

## Anti-Human IL-6 (RABBIT) Antibody - Images



Western blot using Rockland's Anti-IL6 antibody. Protein was resolved on a 4-20% Tris-Glycine gel by SDS-PAGE and transferred onto nitrocellulose. The blot shows detection of a band ~21 kDa in size corresponding to anti-IL6 antibody. Molecular weight markers are also shown (MW). After transfer, the membrane was blocked for 30 minutes with 1% BSA-TBST. Detection occurred using peroxidase conjugated Goat anti-Rabbit IgG (p/n 611-103-122) secondary antibody diluted 1:40,000 in blocking buffer (p/n MB-070) for 30 min at RT followed by reaction with FemtoMax™ chemiluminescent substrate. Image was captured using VersaDoc™ MP 4000 imaging system (Bio-Rad).

## Anti-Human IL-6 (RABBIT) Antibody - Background

Anti-IL-6 Antibody recognizes human IL-6 that is a secreted cytokine with a wide variety of biological functions. IL-6 is a potent inducer of the acute phase response and plays an essential role in the final differentiation of B-cells into Ig-secreting cells involved in lymphocyte and monocyte differentiation. IL-6 induces myeloma and plasmacytoma growth and induces nerve cells differentiation and acts on B-cells, T-cells, hepatocytes, hematopoietic progenitor cells and cells of the CNS. IL-6 also acts as a myokine. It is discharged into the bloodstream after muscle contraction and acts to increase the breakdown of fats and to improve insulin resistance. Anti-IL6 antibody is ideal for investigators involved in Immunology and Cancer research.