

**Anti-Cyclin A (RABBIT) Antibody**  
**Cyclin A Antibody**  
**Catalog # ASR3661**

**Specification**

---

**Anti-Cyclin A (RABBIT) Antibody - Product Information**

Host	Rabbit
Conjugate	Unconjugated
Target Species	Human
Reactivity	Human
Clonality	Polyclonal
Application	WB, IHC, E, IP, I, LCI
Application Note	Anti-Cyclin-A antibody has been tested by western blot and immunohistochemistry and is suitable for the detection by immunoblot, ELISA, IHC, and IP of human, rat and mouse Cyclin A. Researchers should determine optimal titers for applications that are not stated below.
Physical State	Liquid (sterile filtered)
Immunogen	Anti-Cyclin-A Antibody was produced by repeated immunizations with a recombinant protein corresponding to the human cyclin A.
Preservative	0.01% (w/v) Sodium Azide

**Anti-Cyclin A (RABBIT) Antibody - Additional Information**

**Gene ID** 890

**Other Names**  
890

**Purity**

Anti-Cyclin A was prepared from monospecific antiserum by delipidation and defibrination. Antiserum will specifically react with a 60 kDa Cyclin A protein from human, rat and mouse tissue. No reaction was observed against other related cyclins. Cross reactivity with Cyclin A from other species may also occur.

**Storage Condition**

Store vial at -20° C prior to opening. Aliquot contents and freeze at -20° C or below for extended storage. Avoid cycles of freezing and thawing. Centrifuge product if not completely clear after standing at room temperature. This product is stable for several weeks at 4° C as an undiluted liquid. Dilute only prior to immediate use.

**Precautions Note**

This product is for research use only and is not intended for therapeutic or diagnostic applications.

**Anti-Cyclin A (RABBIT) Antibody - Protein Information**

**Name** CCNA2 ([HGNC:1578](#))

**Function**

Cyclin which controls both the G1/S and the G2/M transition phases of the cell cycle. Functions through the formation of specific serine/threonine protein kinase holoenzyme complexes with the cyclin- dependent protein kinases CDK1 or CDK2. The cyclin subunit confers the substrate specificity of these complexes and differentially interacts with and activates CDK1 and CDK2 throughout the cell cycle.

**Cellular Location**

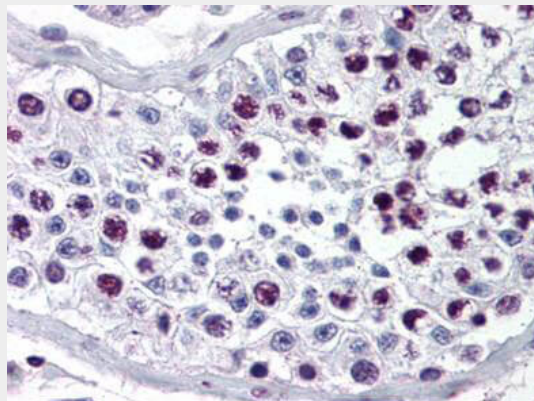
Nucleus. Cytoplasm. Note=Exclusively nuclear during interphase (PubMed:1312467). Detected in the nucleus and the cytoplasm at prophase (PubMed:1312467). Cytoplasmic when associated with SCAPER (PubMed:17698606).

**Anti-Cyclin A (RABBIT) Antibody - Protocols**

Provided below are standard protocols that you may find useful for product applications.

- [Western Blot](#)
- [Blocking Peptides](#)
- [Dot Blot](#)
- [Immunohistochemistry](#)
- [Immunofluorescence](#)
- [Immunoprecipitation](#)
- [Flow Cytometry](#)
- [Cell Culture](#)

**Anti-Cyclin A (RABBIT) Antibody - Images**



Immunohistochemistry of Rabbit Anti-Cyclin A antibody. Tissue: human testes tissue. Fixation: formalin fixed paraffin embedded. Antigen retrieval: not required. Primary antibody: Cyclin A antibody at 1:500 for 1 h at RT. Secondary antibody: Peroxidase rabbit secondary antibody at 1:10,000 for 45 min at RT. Localization: Cyclin A is nuclear and cytoplasmic. Staining: Cyclin A as precipitated red signal with hematoxylin purple nuclear counterstain.

**Anti-Cyclin A (RABBIT) Antibody - Background**

Anti-Cyclin A detects Cyclin A. Cyclin A is a member of the cyclin family. Cyclin A binds to S phase Cdk2 and is required for the cell to progress through the S phase. Cyclin A/ Cdk2 is inhibited by the complex p21CIP. Anti-Cyclin A Antibody is ideal for investigators involved in Cell Signaling, cell

biology and Signal Transduction research.