

**F(ab')<sub>2</sub> Anti-MOUSE IgG (H&L) (Phycoerythrin Conjugated) Pre-adsorbed Secondary Antibody****Goat Polyclonal, R-Phycoerythrin (RPE)  
Catalog # ASR3194****Specification****F(ab')<sub>2</sub> Anti-MOUSE IgG (H&L) (Phycoerythrin Conjugated) Pre-adsorbed Secondary Antibody - Product Information**

Description	<b>F(ab')<sub>2</sub> Anti-MOUSE IgG (H&amp;L) (GOAT) Antibody Phycoerythrin conjugated Min X Bv Hm, Hs, Hu Rb, Rt, &amp; Sh Serum Proteins</b>
Host	<b>Goat</b>
Conjugate	<b>R-Phycoerythrin (RPE)</b>
Target Species	<b>Mouse</b>
Reactivity	<b>Mouse</b>
Clonality	<b>Polyclonal</b>
Application	<b>,3,4,</b>
Application Note	<b>IF Microscopy 1:100-1:250;FlowCytometry 1:100-1:250;FLOW1:100-1:250</b>
Physical State	<b>Lyophilized</b>
Host Isotype	<b>IgG F(ab')<sub>2</sub></b>
Target Isotype	<b>IgG (H&amp;L)</b>
Buffer	<b>0.02 M Potassium Phosphate, 0.15 M Sodium Chloride, pH 7.2</b>
Immunogen	<b>F(ab')<sub>2</sub> anti-Mouse IgG (H&amp;L) was produced by repeated immunization with Mouse IgG whole molecule in goat.</b>
Reconstitution Volume	<b>1.0 mL</b>
Reconstitution Buffer	<b>Restore with deionized water (or equivalent)</b>
Stabilizer	<b>10 mg/mL Bovine Serum Albumin (BSA) - Immunoglobulin and Protease free</b>
Preservative	<b>0.01% (w/v) Sodium Azide</b>

**F(ab')<sub>2</sub> Anti-MOUSE IgG (H&L) (Phycoerythrin Conjugated) Pre-adsorbed Secondary Antibody - Additional Information****Shipping Condition****Ambient****Purity**

F(ab')<sub>2</sub> Anti-MOUSE IgG (H&L) (GOAT) Antibody was prepared from monospecific antiserum by immunoaffinity chromatography using Mouse IgG coupled to agarose beads followed by solid phase adsorption(s) to remove any unwanted reactivities, pepsin digestion and chromatographic separation. F(ab')<sub>2</sub> Anti-MOUSE IgG (H&L) (GOAT) Antibody assays by immunoelectrophoresis resulted in a single precipitin arc against anti-Phycoerythrin, anti-Goat Serum, Mouse IgG and Mouse Serum. No reaction was observed against anti-Pepsin, anti-Goat IgG F(c) or Bovine Chicken Goat Guinea Pig Horse Hamster Human Rabbit Rat and Sheep Serum Proteins.

**Storage Condition**

Store vial at 4° C prior to opening. Dilute only prior to immediate use. Do not freeze after reconstitution. Store reagent in the dark. This product is stable at 4° C as an undiluted liquid. Use subdued lighting during handling and incubation of cells prior to analysis.

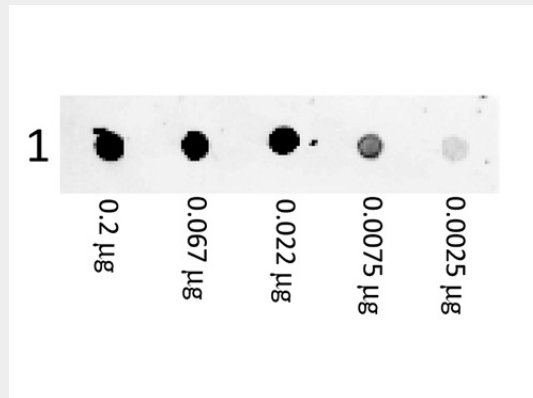
**Precautions Note**

This product is for research use only and is not intended for therapeutic or diagnostic applications.

**F(ab')<sub>2</sub> Anti-MOUSE IgG (H&L) (Phycoerythrin Conjugated) Pre-adsorbed Secondary Antibody - Protein Information****F(ab')<sub>2</sub> Anti-MOUSE IgG (H&L) (Phycoerythrin Conjugated) Pre-adsorbed Secondary Antibody - Protocols**

Provided below are standard protocols that you may find useful for product applications.

- [Western Blot](#)
- [Blocking Peptides](#)
- [Dot Blot](#)
- [Immunohistochemistry](#)
- [Immunofluorescence](#)
- [Immunoprecipitation](#)
- [Flow Cytometry](#)
- [Cell Culture](#)

**F(ab')<sub>2</sub> Anti-MOUSE IgG (H&L) (Phycoerythrin Conjugated) Pre-adsorbed Secondary Antibody - Images**

Dot Blot of Phycoerythrin conjugated Goat F(ab')<sub>2</sub> Anti Mouse IgG (H&L) Antibody. Lane 1: Mouse IgG. Load: A three-fold serial dilution starting at 200ng. Primary Antibody: None. Secondary Antibody: F(ab')<sub>2</sub> Anti-Mouse IgG (H&L) (GOAT) Antibody Phycoerythrin conjugated secondary antibody was used at 1:1000 for 1 Hour at RT. Blocking: 5% Blotto for 1 Hour at 20°C.

**F(ab')<sub>2</sub> Anti-MOUSE IgG (H&L) (Phycoerythrin Conjugated) Pre-adsorbed Secondary Antibody - Background**

F(ab')<sub>2</sub> anti-Mouse IgG (H&L) antibody generated in goat detects specifically Mouse IgG whole molecule. This secondary antibody anti-Mouse is ideal for investigators who routinely perform titration assays, western-blot, immunoprecipitation and more generally immunoassays.