

**F(ab')<sub>2</sub> Anti-Mouse IgG F(ab')<sub>2</sub> (Phycoerythrin Conjugated) Pre-Adsorbed Secondary Antibody****Goat Polyclonal, R-Phycoerythrin (RPE)  
Catalog # ASR3193****Specification****F(ab')<sub>2</sub> Anti-Mouse IgG F(ab')<sub>2</sub> (Phycoerythrin Conjugated) Pre-Adsorbed Secondary Antibody - Product Information**

Description	<b>F(ab')<sub>2</sub> Anti-MOUSE IgG F(ab')<sub>2</sub> (GOAT) Antibody Phycoerythrin conjugated Min X Bv Hs &amp; Hu Serum Proteins</b>
Host	<b>Goat</b>
Conjugate	<b>R-Phycoerythrin (RPE)</b>
Target Species	<b>Mouse</b>
Reactivity	<b>Mouse</b>
Clonality	<b>Polyclonal</b>
Application	<b>,1,3,4,</b>
Application Note	<b>IF Microscopy 1:100-1:250;FlowCytometry 1:100-1:250;Western Blot 1:100-1:500;FLOW1:100-1:250</b>
Physical State	<b>Lyophilized</b>
Host Isotype	<b>IgG F(ab')<sub>2</sub></b>
Target Isotype	<b>IgG F(ab')<sub>2</sub></b>
Buffer	<b>0.02 M Potassium Phosphate, 0.15 M Sodium Chloride, pH 7.2</b>
Immunogen	<b>Mouse IgG F(ab')<sub>2</sub> fragment</b>
Reconstitution Volume	<b>1.0 mL</b>
Reconstitution Buffer	<b>Restore with deionized water (or equivalent)</b>
Stabilizer	<b>10 mg/mL Bovine Serum Albumin (BSA) - Immunoglobulin and Protease free</b>
Preservative	<b>0.01% (w/v) Sodium Azide</b>

**F(ab')<sub>2</sub> Anti-Mouse IgG F(ab')<sub>2</sub> (Phycoerythrin Conjugated) Pre-Adsorbed Secondary Antibody - Additional Information****Shipping Condition**

Wet Ice

**Purity**

F(ab')<sub>2</sub> fragment PE conjugated Anti-Mouse IgG F(ab')<sub>2</sub> was prepared from monospecific antiserum by immunoaffinity chromatography using Mouse IgG coupled to agarose beads followed by solid phase adsorption(s) to remove any unwanted reactivities, pepsin digestion and chromatographic separation. Assay by immunoelectrophoresis resulted in a single precipitin arc against anti-Phycoerythrin, anti-Goat Serum, Mouse IgG, Mouse IgG F(ab')<sub>2</sub> and Mouse Serum. No reaction was observed against anti-Pepsin, anti-Goat IgG F(c), Mouse IgG F(c) or Bovine, Horse or Human Serum Proteins.

**Storage Condition**

Store vial at 4° C prior to opening. Dilute only prior to immediate use. Do not freeze after reconstitution. Store reagent in the dark. This product is stable at 4° C as an undiluted liquid. Use subdued lighting during handling and incubation of cells prior to analysis.

#### Precautions Note

This product is for research use only and is not intended for therapeutic or diagnostic applications.

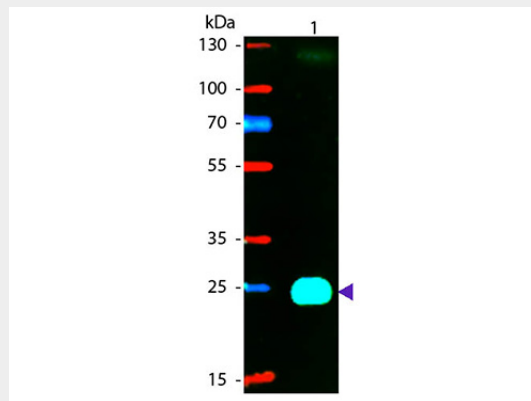
### F(ab')<sub>2</sub> Anti-Mouse IgG F(ab')<sub>2</sub> (Phycoerythrin Conjugated) Pre-Adsorbed Secondary Antibody - Protein Information

### F(ab')<sub>2</sub> Anti-Mouse IgG F(ab')<sub>2</sub> (Phycoerythrin Conjugated) Pre-Adsorbed Secondary Antibody - Protocols

Provided below are standard protocols that you may find useful for product applications.

- [Western Blot](#)
- [Blocking Peptides](#)
- [Dot Blot](#)
- [Immunohistochemistry](#)
- [Immunofluorescence](#)
- [Immunoprecipitation](#)
- [Flow Cytometry](#)
- [Cell Culture](#)

### F(ab')<sub>2</sub> Anti-Mouse IgG F(ab')<sub>2</sub> (Phycoerythrin Conjugated) Pre-Adsorbed Secondary Antibody - Images



Western blot of Phycoerythrin conjugated Goat F(ab')<sub>2</sub> Anti-Mouse IgG F(ab')<sub>2</sub> (Pre-Adsorbed) secondary antibody. Lane 1: Mouse F(ab)<sub>2</sub>. Lane 2: None. Load: 50 ng per lane. Primary antibody: None. Secondary antibody: Phycoerythrin goat secondary antibody at 1:1,000 for 60 min at RT. Blocking: MB-070 for 30 min at RT. Predicted/Observed size: 25 kDa, 25 kDa for Mouse IgG F(ab')<sub>2</sub>. Other band(s): None.