

Anti-Mouse IgG2a (Gamma 2a chain) (Alkaline Phosphatase Conjugated) Secondary Antibody**Rabbit Polyclonal, Alkaline Phosphatase (Calf Intestine)
Catalog # ASR3098****Specification****Anti-Mouse IgG2a (Gamma 2a chain) (Alkaline Phosphatase Conjugated) Secondary Antibody - Product Information**

Description	Anti-MOUSE IgG2a (Gamma 2a chain) (RABBIT) Antibody Alkaline Phosphatase Conjugated
Host	Rabbit
Conjugate	Alkaline Phosphatase (Calf Intestine)
Target Species	Mouse
Clonality	Polyclonal
Application	,1,10,15,
Application Note	ELISA 1:2,000-1:10,000;Western Blot 1:500-1:2,500;Immunochemistry 1:200-1:1,000
Physical State	Liquid (sterile filtered)
Host Isotype	IgG
Target Isotype	IgG2a
Buffer	0.05 M Tris Chloride, 0.15M Sodium Chloride, 0.001M Magnesium Chloride, 0.0001M Zinc Chloride, 50% (v/v) Glycerol; pH 8.0
Immunogen	Mouse IgG2a heavy chain
Stabilizer	10 mg/mL Bovine Serum Albumin (BSA) - Immunoglobulin and Protease free
Preservative	0.1% (w/v) Sodium Azide

Anti-Mouse IgG2a (Gamma 2a chain) (Alkaline Phosphatase Conjugated) Secondary Antibody - Additional Information**Shipping Condition**

Wet Ice

Purity

This product was prepared from monospecific antiserum by immunoaffinity chromatography using antigens coupled to agarose beads followed by solid phase adsorption(s) to remove any unwanted reactivities. Assay by immunoelectrophoresis resulted in a single precipitin arc against anti-Alkaline Phosphatase (calf intestine) and anti-Rabbit Serum. Specificity was confirmed by ELISA at less than 1% cross reactivity against other mouse heavy or light chain isotypes.

Storage Condition

Store vial at 4° C before opening. DO NOT FREEZE. This product is stable at 4° C as an undiluted liquid. Dilute only prior to immediate use. Freezing alkaline phosphatase conjugates will result in a substantial loss of enzymatic activity.

Precautions Note

This product is for research use only and is not intended for therapeutic or diagnostic applications.

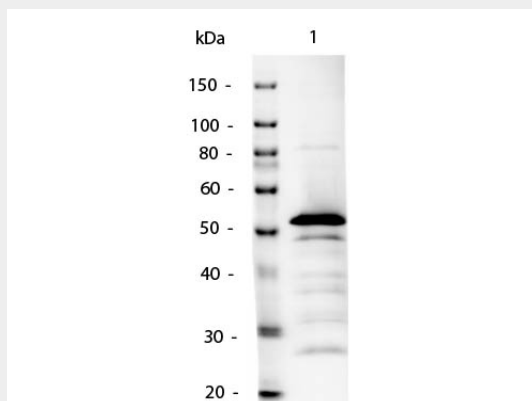
Anti-Mouse IgG2a (Gamma 2a chain) (Alkaline Phosphatase Conjugated) Secondary Antibody - Protein Information

Anti-Mouse IgG2a (Gamma 2a chain) (Alkaline Phosphatase Conjugated) Secondary Antibody - Protocols

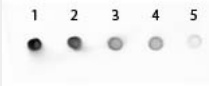
Provided below are standard protocols that you may find useful for product applications.

- [Western Blot](#)
- [Blocking Peptides](#)
- [Dot Blot](#)
- [Immunohistochemistry](#)
- [Immunofluorescence](#)
- [Immunoprecipitation](#)
- [Flow Cytometry](#)
- [Cell Culture](#)

Anti-Mouse IgG2a (Gamma 2a chain) (Alkaline Phosphatase Conjugated) Secondary Antibody - Images



Western Blot of Mouse IgG2a Antibody Alkaline Phosphatase Conjugated. Lane 1: Mouse IgG2a. Lane 2: none. Load: 50ng per lane. Primary antibody: none. Secondary antibody: Mouse IgG2a Antibody Alkaline Phosphatase Conjugated at 1:1,000 o/n at 4°C. Block: MB-070 for 30 min at RT. Reaction visualized with alkaline phosphatase substrate for 30 seconds at RT. Predicted/Observed size: 55kDa for Mouse IgG2a.



Dot Blot of Mouse IgG2a Antibody Alkaline Phosphatase Conjugated. Antigen: Mouse IgG2a Load: Lane 1 - 200ng Lane 2 - 66.7ng Lane 3 - 22.2ng Lane 4 - 7.4 Lane 2.5ng Primary antibody: none Secondary antibody: Mouse IgG2a Antibody Alkaline Phosphatase Conjugated at 1:1,000 for 60 min at RT. Block: MB-070 for 60 min at RT Reaction visualized using alkaline phosphatase substrate for 30 seconds at RT.