

**Anti-RABBIT IgG (H&L) (Peroxidase Conjugated) Pre-adsorbed Secondary Antibody
Goat Polyclonal, Peroxidase (Horseradish)
Catalog # ASR3058****Specification****Anti-RABBIT IgG (H&L) (Peroxidase Conjugated) Pre-adsorbed Secondary Antibody -
Product Information**

Description	Anti-RABBIT IgG (H&L) (GOAT) Antibody Peroxidase Conjugated (Min X Bv Ch Gt GP Ham Hs Hu Ms Rt & Sh Serum Proteins)
Host	Goat
Conjugate	Peroxidase (Horseradish)
Target Species	Rabbit
Clonality	Polyclonal
Application	,1,10,15,
Application Note	ELISA 1:90,000;Western Blot 1:2,000-1:10,000;Immunochemistry 1:1,000-1:5,000
Physical State	Lyophilized
Host Isotype	IgG
Target Isotype	IgG (H&L)
Buffer	0.02 M Potassium Phosphate, 0.15 M Sodium Chloride, pH 7.2
Immunogen	Rabbit IgG whole molecule
Reconstitution Volume	1.0 mL
Reconstitution Buffer	Restore with deionized water (or equivalent)
Stabilizer	10 mg/mL Bovine Serum Albumin (BSA) - Immunoglobulin and Protease free
Preservative	0.01% (w/v) Gentamicin Sulfate. Do NOT add Sodium Azide!

**Anti-RABBIT IgG (H&L) (Peroxidase Conjugated) Pre-adsorbed Secondary Antibody -
Additional Information****Shipping Condition**

Ambient

Purity

Conjugated Second Antibody was prepared from monospecific antiserum by immunoaffinity chromatography using Rabbit IgG coupled to agarose beads followed by solid phase adsorption(s) to remove any unwanted reactivities. Assay by immunoelectrophoresis resulted in a single precipitin arc against anti-Peroxidase, anti-Goat Serum, Rabbit IgG and Rabbit Serum. No reaction was observed against or Bovine, Chicken, Goat, Guinea Pig, Hamster, Horse, Human, Mouse, Rat and Sheep Serum Proteins.

Storage Condition

Store secondary antibody at 4° C prior to restoration. For extended storage aliquot contents and freeze at -20° C or below. Avoid cycles of freezing and thawing. Centrifuge product if not completely clear after standing at room temperature. This product is stable for several weeks at

4° C as an undiluted liquid. Dilute only prior to immediate use.

Precautions Note

This product is for research use only and is not intended for therapeutic or diagnostic applications.

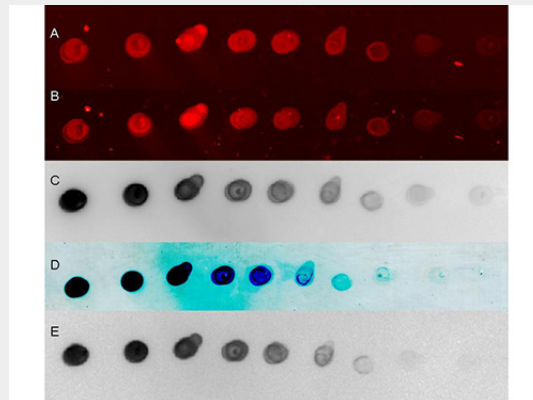
Anti-RABBIT IgG (H&L) (Peroxidase Conjugated) Pre-adsorbed Secondary Antibody - Protein Information

Anti-RABBIT IgG (H&L) (Peroxidase Conjugated) Pre-adsorbed Secondary Antibody - Protocols

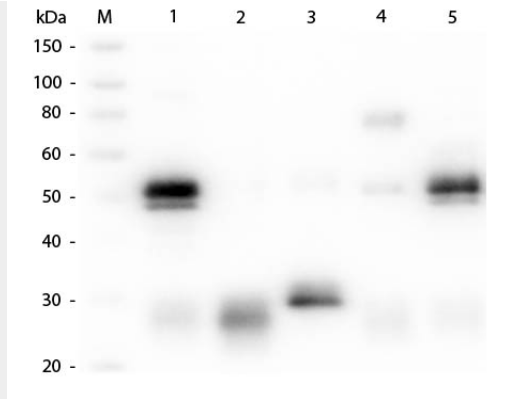
Provided below are standard protocols that you may find useful for product applications.

- [Western Blot](#)
- [Blocking Peptides](#)
- [Dot Blot](#)
- [Immunohistochemistry](#)
- [Immunofluorescence](#)
- [Immunoprecipitation](#)
- [Flow Cytometry](#)
- [Cell Culture](#)

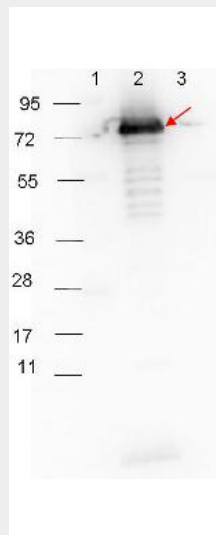
Anti-RABBIT IgG (H&L) (Peroxidase Conjugated) Pre-adsorbed Secondary Antibody - Images



Abcepta secondary antibodies detect rabbit primary antibodies in a variety of platforms. Shown here is a serial 1:1 dilution of control rabbit IgG protein (011-0102, 250ng starting total load) co incubated with Abcepta HRP conjugated Goat anti Rabbit IgG (ASR3058) and DyLight 649 conjugated goat anti Rabbit (611-143-122) 1:20K in MB-070. Blot was dried and imaged (A) on Biorad Versa Doc (30 sec, DyLight649), (B) LiCor Odyssey Reader (700 nm), (C) Rewetted incubated with Femtomax 110 reimaged using BioVersaDoc (for 60 sec), (D) Incubated with TMB substrate TMBM for 5 minutes and scanned, and (E) Rewetted for Chemiluminescence and imaged for 90 sec on the BioRad VersaDoc Imager,



Western Blot of Anti-Rabbit IgG (H&L) (GOAT) Antibody (Min X Bv, Ch, Gt, GP, Ham, Hs, Hu, Ms, Rt & Sh Serum Proteins) . Lane M: 3 μ l Molecular Ladder. Lane 1: Rabbit IgG whole molecule . Lane 2: Rabbit IgG F(ab) Fragment . Lane 3: Rabbit IgG F(c) Fragment . Lane 4: Rabbit IgM Whole Molecule . Lane 5: Normal Rabbit Serum . All samples were reduced. Load: 50 ng per lane. Block: MB-070 for 30 min at RT. Primary Antibody: Anti-Rabbit IgG (H&L) (GOAT) Antibody (Min X Bv, Ch, Gt, GP, Ham, Hs, Hu, Ms, Rt & Sh Serum Proteins) 1:1,000 for 60 min at RT. Secondary antibody: Anti-Goat IgG (DONKEY) Peroxidase Conjugated Antibody 1:40,000 in MB-070 for 30 min at RT. Predicted/Observed Size: 25 and 50 kDa for Rabbit IgG and Serum, 25 kDa for F(c) and F(ab), 70 and 23 kDa for IgM. Rabbit F(c) migrates slightly higher.



HRP-conjugated Goat-Anti-Rabbit secondary antibody was used at 1:40,000 in MB-070 blocking buffer to detect a rabbit primary antibody by Western Blot. Anti p27 antibody (200-401-C30, 1:1000 RT 30 minutes) showed detection of 0.1 μ g of recombinant p27 protein. Lane 1: Molecular weight markers. Lane 2: MBP-p27 fusion protein (arrow; expected MW: 73.3 kDa). Lane 3: MBP alone. Protein was run on a 4-20% gel, then transferred to 0.45 μ m nitrocellulose and blocked with 1% BSA-TTBS overnight at 4°C. Blot was imaged on the VersaDoc MP 4000 imaging system (Bio-Rad).

Anti-RABBIT IgG (H&L) (Peroxidase Conjugated) Pre-adsorbed Secondary Antibody - Background

Anti Rabbit HRP Conjugated Secondary Antibodies are ideal for Western Blotting, Immunohistochemistry, ELISA as well as other antibody detection methods.