

## **Anti-Guinea Pig IgG (H&L) (Alkaline Phosphatase Conjugated) Pre-Adsorbed Secondary Antibody**

**Goat Polyclonal, Alkaline Phosphatase (Calf Intestine)  
Catalog # ASR3044**

### **Specification**

---

## **Anti-Guinea Pig IgG (H&L) (Alkaline Phosphatase Conjugated) Pre-Adsorbed Secondary Antibody - Product Information**

Description	<b>Anti-GUINEA PIG IgG (H&amp;L) (GOAT) Antibody Alkaline Phosphatase Conjugated (Min X Bv Ch Gt Ham Hs Hu Ms Rb Rt &amp; Sh Serum Proteins)</b>
Host	<b>Goat</b>
Conjugate	<b>Alkaline Phosphatase (Calf Intestine)</b>
Target Species	<b>Guinea Pig</b>
Reactivity	<b>Guinea Pig</b>
Clonality	<b>Polyclonal</b>
Application	<b>,1,10,15,</b>
Application Note	<b>ELISA 1:2,000-1:10,000;Western Blot 1:500-1:2,500;Immunochemistry 1:200-1:1,000</b>
Physical State	<b>Liquid (sterile filtered)</b>
Host Isotype	<b>IgG</b>
Target Isotype	<b>IgG (H&amp;L)</b>
Buffer	<b>0.05 M Tris Chloride, 0.15M Sodium Chloride, 0.001M Magnesium Chloride, 0.0001M Zinc Chloride, 50% (v/v) Glycerol; pH 8.0</b>
Immunogen	<b>Anti-Guinea Pig IgG (H&amp;L) was produced by repeated immunization with Guinea Pig IgG whole molecule in goat.</b>

## **Anti-Guinea Pig IgG (H&L) (Alkaline Phosphatase Conjugated) Pre-Adsorbed Secondary Antibody - Additional Information**

### **Shipping Condition**

Wet Ice

### **Purity**

This product was prepared from monospecific antiserum by immunoaffinity chromatography using Guinea Pig IgG coupled to agarose beads followed by solid phase adsorption(s) to remove any unwanted reactivities. Assay by immunoelectrophoresis resulted in a single precipitin arc against anti-Alkaline Phosphatase (calf intestine), anti-Goat Serum, Guinea Pig IgG and Guinea Pig Serum. No reaction was observed against Bovine, Chicken, Goat, Hamster, Horse, Human, Mouse, Rabbit, Rat and Sheep Serum Proteins.

### **Storage Condition**

Store vial at 4° C before opening. DO NOT FREEZE. This product is stable at 4° C as an undiluted liquid. Dilute only prior to immediate use. Freezing alkaline phosphatase conjugates will result in a substantial loss of enzymatic activity.

### Precautions Note

This product is for research use only and is not intended for therapeutic or diagnostic applications.

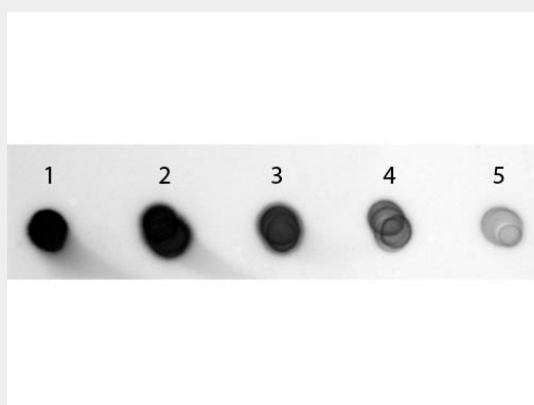
### Anti-Guinea Pig IgG (H&L) (Alkaline Phosphatase Conjugated) Pre-Adsorbed Secondary Antibody - Protein Information

### Anti-Guinea Pig IgG (H&L) (Alkaline Phosphatase Conjugated) Pre-Adsorbed Secondary Antibody - Protocols

Provided below are standard protocols that you may find useful for product applications.

- [Western Blot](#)
- [Blocking Peptides](#)
- [Dot Blot](#)
- [Immunohistochemistry](#)
- [Immunofluorescence](#)
- [Immunoprecipitation](#)
- [Flow Cytometry](#)
- [Cell Culture](#)

### Anti-Guinea Pig IgG (H&L) (Alkaline Phosphatase Conjugated) Pre-Adsorbed Secondary Antibody - Images



Dot Blot of Goat anti-Guinea Pig IgG Antibody (Min X 10) Alkaline Phosphatase Conjugated. Antigen: Guinea Pig IgG. Load: Lane 1 - 200 ng Lane 2 - 66.67 ng Lane 3 - 22.22 ng Lane 4 - 7.41 ng Lane 5 - 2.47 ng. Primary antibody: none. Secondary antibody: Goat anti-Guinea Pig IgG Antibody (Min X 10) Alkaline Phosphatase Conjugated at 1:1,000 for 60 min at RT. Block: MB-070 for 1 HR at RT. Visualized using NBT-100 Alkaline Phosphatase Substrate for 30 seconds at RT.

### Anti-Guinea Pig IgG (H&L) (Alkaline Phosphatase Conjugated) Pre-Adsorbed Secondary Antibody - Background

Anti-Guinea Pig IgG (H&L) antibody generated in goat detects specifically guinea pig IgG (H&L). This secondary antibody anti-Guinea Pig is ideal for investigators who routinely perform titration assays, western-blot, immunoprecipitation and more generally immunoassays.