

**Anti-Rat IgA (alpha chain) (Texas Red™ Conjugated) Secondary Antibody**  
**Goat Polyclonal, Texas Red®**  
**Catalog # ASR2827****Specification****Anti-Rat IgA (alpha chain) (Texas Red™ Conjugated) Secondary Antibody - Product Information**

Description	<b>Anti-RAT IgA (alpha chain) (GOAT) Antibody Texas Red™ Conjugated</b>
Host	<b>Goat</b>
Conjugate	<b>Texas Red®</b>
FP Value	<b>3.0 moles Texas Red® per mole of IgG</b>
Target Species	<b>Rat</b>
Clonality	<b>Polyclonal</b>
Application	<b>,3,4,</b>
Application Note	<b>FLISA 1:10,000-1:50,000;IF Microscopy 1:1,000-1:5,000;FlowCytometry 1:500-1:2,500</b>
Physical State	<b>Lyophilized</b>
Host Isotype	<b>IgG</b>
Target Isotype	<b>IgA</b>
Buffer	<b>0.02 M Potassium Phosphate, 0.15 M Sodium Chloride, pH 7.2</b>
Immunogen	<b>Rat IgA alpha heavy chain</b>
Reconstitution Volume	<b>1.0 mL</b>
Reconstitution Buffer	<b>Restore with deionized water (or equivalent)</b>
Stabilizer	<b>10 mg/mL Bovine Serum Albumin (BSA) - Immunoglobulin and Protease free</b>
Preservative	<b>0.01% (w/v) Sodium Azide</b>

**Anti-Rat IgA (alpha chain) (Texas Red™ Conjugated) Secondary Antibody - Additional Information****Shipping Condition**

Ambient

**Purity**

This product was prepared from monospecific antiserum by immunoaffinity chromatography using Rat IgA coupled to agarose beads followed by solid phase adsorption(s) to remove any unwanted reactivities. Assay by immunoelectrophoresis resulted in a single precipitin arc against anti-Goat Serum, Rat IgA and Rat Serum. Specificity was confirmed by ELISA at less than 1% against other Rat heavy or light chain combinations.

**Storage Condition**

Store vial at 4° C prior to restoration. For extended storage aliquot contents and freeze at -20° C or below. Avoid cycles of freezing and thawing. Centrifuge product if not completely clear after standing at room temperature. This product is stable for several weeks at 4° C as an undiluted liquid. Dilute only prior to immediate use.

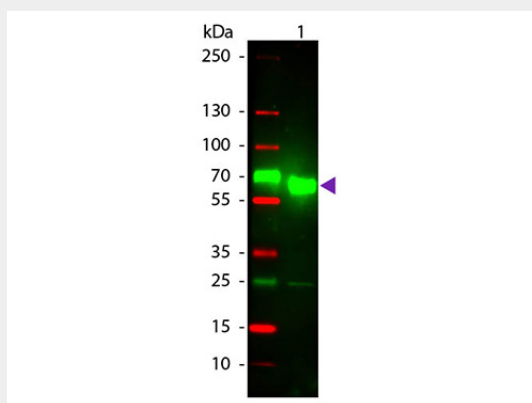
**Precautions Note**

This product is for research use only and is not intended for therapeutic or diagnostic applications.

**Anti-Rat IgA (alpha chain) (Texas Red™ Conjugated) Secondary Antibody - Protein Information****Anti-Rat IgA (alpha chain) (Texas Red™ Conjugated) Secondary Antibody - Protocols**

Provided below are standard protocols that you may find useful for product applications.

- [Western Blot](#)
- [Blocking Peptides](#)
- [Dot Blot](#)
- [Immunohistochemistry](#)
- [Immunofluorescence](#)
- [Immunoprecipitation](#)
- [Flow Cytometry](#)
- [Cell Culture](#)

**Anti-Rat IgA (alpha chain) (Texas Red™ Conjugated) Secondary Antibody - Images**

Western Blot of Texas Red™ Conjugated Goat Anti-Rat IgA (Alpha chain) Secondary Antibody. Lane 1: Mouse IgA Kappa. Lane 2: None. Load: 100 ng per lane. Primary antibody: None. Secondary antibody: Texas Red™ goat secondary antibody at 1:1,000 for 60 min at RT. Blocking: MB-070 for 30 min at RT. Predicted/Observed size: 55 kDa, 55 kDa for Rat IgA. Other band(s): Rat IgA light chain.

**Anti-Rat IgA (alpha chain) (Texas Red™ Conjugated) Secondary Antibody - Background**

This product is designed for immunofluorescence microscopy, fluorescence based plate assays (FLISA) and fluorescent western blotting. This product is also suitable for multiplex analysis, including multicolor imaging, utilizing various commercial platforms.