

**Anti-Rat IgG (H&L) (Fluorescein Conjugated) Pre-Adsorbed Secondary Antibody**  
**Goat Polyclonal, Fluorescein (FITC)**  
**Catalog # ASR2791****Specification****Anti-Rat IgG (H&L) (Fluorescein Conjugated) Pre-Adsorbed Secondary Antibody - Product Information**

|                       |  |
|-----------------------|--|
| Description           | <b>Anti-RAT IgG (H&amp;L) (GOAT) Antibody<br/>Fluorescein Conjugated (Min X Bv Ch Gt GP<br/>Ham Hs Hu Ms Rb &amp; Sh Serum Proteins)<br/>Goat<br/>Fluorescein (FITC)<br/>3.1 moles Fluorescein (FITC) per mole of<br/>IgG<br/>Rat<br/>Polyclonal<br/>,3,4,<br/>FLISA 1:10,000-1:50,000;IF Microscopy<br/>1:1,000-1:5,000;FlowCytometry<br/>1:500-1:2,500<br/>Lyophilized<br/>IgG<br/>IgG (H&amp;L)<br/>0.02 M Potassium Phosphate, 0.15 M<br/>Sodium Chloride, pH 7.2<br/>Rat IgG whole molecule<br/>1.0 mL<br/>Restore with deionized water (or<br/>equivalent)<br/>10 mg/mL Bovine Serum Albumin (BSA) -<br/>Immunoglobulin and Protease free<br/>0.01% (w/v) Sodium Azide</b> |
| Host                  |  |
| Conjugate             |  |
| FP Value              |  |
| Target Species        |  |
| Clonality             |  |
| Application           |  |
| Application Note      |  |
| Physical State        |  |
| Host Isotype          |  |
| Target Isotype        |  |
| Buffer                |  |
| Immunogen             |  |
| Reconstitution Volume |  |
| Reconstitution Buffer |  |
| Stabilizer            |  |
| Preservative          |  |

**Anti-Rat IgG (H&L) (Fluorescein Conjugated) Pre-Adsorbed Secondary Antibody - Additional Information****Shipping Condition**

Ambient

**Purity**

Rat IgG (H&L) Antibody Fluorescein Conjugated (Pre-Adsorbed) was prepared from monospecific antiserum by immunoaffinity chromatography using Rat IgG coupled to agarose beads followed by solid phase adsorption(s) to remove any unwanted reactivities. Assay by immunoelectrophoresis resulted in a single precipitin arc against anti-Fluorescein, anti-Goat Serum, Rat IgG, Rat IgG F(ab')<sub>2</sub> F(c) and Rat Serum. No reaction was observed against Rat IgG F(ab')<sub>2</sub> F(c) or Bovine, Chicken, Goat, Guinea Pig, Hamster, Horse, Human, Mouse, Rabbit and Sheep Serum Proteins. Specificity was confirmed by ELISA at less than 1% cross reactivity against other mouse or human heavy or light chain isotypes.

**Storage Condition**

Store vial at 4° C prior to restoration. For extended storage aliquot contents and freeze at -20° C or below. Avoid cycles of freezing and thawing. Centrifuge product if not completely clear after standing at room temperature. This product is stable for several weeks at 4° C as an undiluted liquid. Dilute only prior to immediate use.

#### Precautions Note

This product is for research use only and is not intended for therapeutic or diagnostic applications.

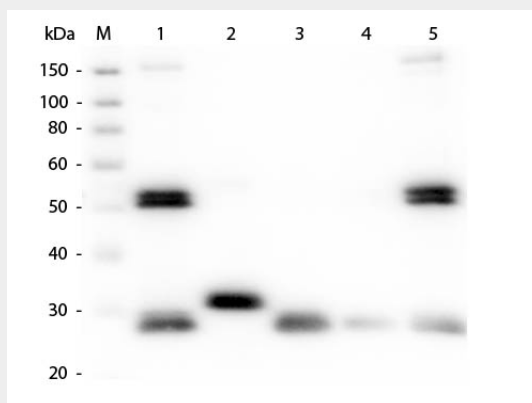
### Anti-Rat IgG (H&L) (Fluorescein Conjugated) Pre-Adsorbed Secondary Antibody - Protein Information

### Anti-Rat IgG (H&L) (Fluorescein Conjugated) Pre-Adsorbed Secondary Antibody - Protocols

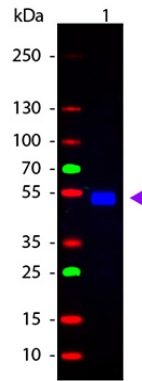
Provided below are standard protocols that you may find useful for product applications.

- [Western Blot](#)
- [Blocking Peptides](#)
- [Dot Blot](#)
- [Immunohistochemistry](#)
- [Immunofluorescence](#)
- [Immunoprecipitation](#)
- [Flow Cytometry](#)
- [Cell Culture](#)

### Anti-Rat IgG (H&L) (Fluorescein Conjugated) Pre-Adsorbed Secondary Antibody - Images



Western Blot of Anti-Rat IgG (H&L) (GOAT) Antibody (Min X Bv Ch Gt GP Ham Hs Hu Ms Rb & Sh Serum Proteins) . Lane M: 3  $\mu$ l Molecular Ladder. Lane 1: Rat IgG whole molecule . Lane 2: Rat IgG F(c) Fragment . Lane 3: Rat IgG F(ab) Fragment . Lane 4: Rat IgM Whole Molecule . Lane 5: Rat Serum . All samples were reduced. Load: 50 ng per lane. Block: MB-070 for 30 min at RT. Primary Antibody: Anti-Rat IgG (H&L) (GOAT) Antibody (Min X Bv Ch Gt GP Ham Hs Hu Ms Rb & Sh Serum Proteins) 1:1,000 for 60 min at RT. Secondary Antibody: Anti-Goat IgG (DONKEY) Peroxidase Conjugated Antibody 1:40,000 in MB-070 for 30 min at RT. Predicted/Obsevered Size: 25 and 55 kDa for Rat IgG and Serum, 25 kDa for F(c) and F(ab), 78 and 25 kDa for IgM. Rat F(c) migrates slightly higher.



Western Blot of Goat anti-Rat IgG Fluorescein Conjugated Antibody. Lane 1: Rat IgG. Lane 2: None. Load: 50 ng per lane. Primary antibody: None. Secondary antibody: Fluorescein goat secondary antibody at 1:1,000 for 60 min at RT. Block: MB-070 for 30 min at RT. Predicted/Observed size: 28 & 55 kDa, 55 kDa for Rat IgG. Other band(s): None.

### **Anti-Rat IgG (H&L) (Fluorescein Conjugated) Pre-Adsorbed Secondary Antibody - Background**

Rat IgG (H&L) Antibody Fluorescein Conjugated (Pre-Adsorbed) is designed for immunofluorescence microscopy, fluorescence based plate assays (FLISA) and fluorescent western blotting. This product is also suitable for multiplex analysis, including multicolor imaging, utilizing various commercial platforms.