

**Anti-Rabbit IgG (H&L) (Texas Red™ Conjugated) Pre-Adsorbed Secondary Antibody
Donkey Polyclonal, Texas Red®
Catalog # ASR2788**

Specification

**Anti-Rabbit IgG (H&L) (Texas Red™ Conjugated) Pre-Adsorbed Secondary Antibody -
Product Information**

Description	Anti-RABBIT IgG (H&L) (DONKEY) Antibody Texas Red™ Conjugated (Min X Bv Ch Gt GP Ham Hs Hu Ms Rt & Sh Serum Proteins) Donkey Texas Red® 2.3 moles Texas Red® per mole of IgG Rabbit Polyclonal ,3,4, FLISA 1:10,000-1:50,000;IF Microscopy 1:1,000-1:5,000;FlowCytometry 1:500-1:2,500 Lyophilized IgG IgG (H&L) 0.02 M Potassium Phosphate, 0.15 M Sodium Chloride, pH 7.2 Rabbit IgG whole molecule 1.0 mL Restore with deionized water (or equivalent) 10 mg/mL Bovine Serum Albumin (BSA) - Immunoglobulin and Protease free 0.01% (w/v) Sodium Azide
Host	
Conjugate	
FP Value	
Target Species	
Clonality	
Application	
Application Note	
Physical State	
Host Isotype	
Target Isotype	
Buffer	
Immunogen	
Reconstitution Volume	
Reconstitution Buffer	
Stabilizer	
Preservative	

**Anti-Rabbit IgG (H&L) (Texas Red™ Conjugated) Pre-Adsorbed Secondary Antibody -
Additional Information**

Shipping Condition

Ambient

Purity

This product was prepared from monospecific antiserum by immunoaffinity chromatography using Rabbit IgG coupled to agarose beads followed by solid phase adsorption(s) to remove any unwanted reactivities. Assay by immunoelectrophoresis resulted in a single precipitin arc against anti-Donkey Serum, Rabbit IgG and Rabbit Serum. No reaction was observed against Bovine, Chicken, Donkey, Guinea Pig, Hamster, Horse, Human, Mouse, Rat and Sheep Serum Proteins.

Storage Condition

Store vial at 4° C prior to restoration. For extended storage aliquot contents and freeze at -20° C or below. Avoid cycles of freezing and thawing. Centrifuge product if not completely clear after standing at room temperature. This product is stable for several weeks at 4° C as an undiluted liquid. Dilute only prior to immediate use.

Precautions Note

This product is for research use only and is not intended for therapeutic or diagnostic applications.

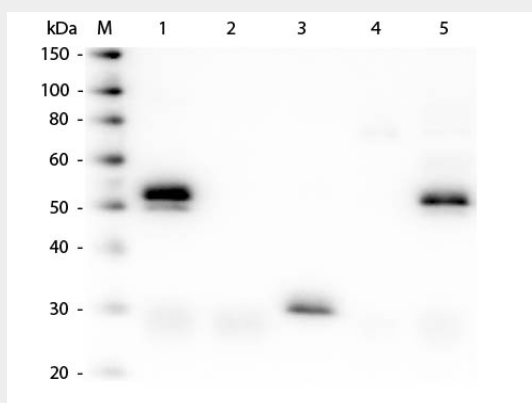
Anti-Rabbit IgG (H&L) (Texas Red™ Conjugated) Pre-Adsorbed Secondary Antibody - Protein Information

Anti-Rabbit IgG (H&L) (Texas Red™ Conjugated) Pre-Adsorbed Secondary Antibody - Protocols

Provided below are standard protocols that you may find useful for product applications.

- [Western Blot](#)
- [Blocking Peptides](#)
- [Dot Blot](#)
- [Immunohistochemistry](#)
- [Immunofluorescence](#)
- [Immunoprecipitation](#)
- [Flow Cytometry](#)
- [Cell Culture](#)

Anti-Rabbit IgG (H&L) (Texas Red™ Conjugated) Pre-Adsorbed Secondary Antibody - Images



Western Blot of Anti-Rabbit IgG (H&L) (DONKEY) Antibody (Min X Bv Ch Gt GP Ham Hs Hu Ms Rt & Sh Serum Proteins) . Lane M: 3 µl Molecular Ladder. Lane 1: Rabbit IgG whole molecule . Lane 2: Rabbit IgG F(ab) Fragment . Lane 3: Rabbit IgG F(c) Fragment . Lane 4: Rabbit IgM Whole Molecule . Lane 5: Normal Rabbit Serum . All samples were reduced. Load: 50 ng of IgG, F(ab), F(c) and Serum, 25 ng of IgM. Block: MB-070 for 30 min at RT. Primary Antibody: Anti-Rabbit IgG (H&L) (DONKEY) Antibody (Min X Bv Ch Gt GP Ham Hs Hu Ms Rt & Sh Serum Proteins) 1:7,500 for 60 min at RT. Secondary antibody: Anti-Donkey IgG (GOAT) Peroxidase Conjugated Antibody 1:40,000 in MB-070 for 30 min at RT. Predicted/Observed Size: 25 and 50 kDa for Rabbit IgG and Serum, 25 kDa for F(c) and F(ab), 70 and 23 kDa for IgM. Rabbit F(c) migrates slightly higher.

Anti-Rabbit IgG (H&L) (Texas Red™ Conjugated) Pre-Adsorbed Secondary Antibody - Background

This product is designed for immunofluorescence microscopy, fluorescence based plate assays (FLISA) and fluorescent western blotting. This product is also suitable for multiplex analysis, including multicolor imaging, utilizing various commercial platforms.