

**Anti-Rabbit IgG (H&L) Pre-Adsorbed Secondary Antibody**  
**Guinea Pig Polyclonal, Biotin**  
**Catalog # ASR2771****Specification**

---

**Anti-Rabbit IgG (H&L) Pre-Adsorbed Secondary Antibody - Product Information**

Description	<b>Anti-RABBIT IgG (H&amp;L) (GUINEA PIG) Antibody Biotin Conjugated (Min X Hu, Gt, Ms Serum Proteins)</b>
Host	<b>Guinea Pig</b>
Conjugate	<b>Biotin</b>
Target Species	<b>Rabbit</b>
Clonality	<b>Polyclonal</b>
Application	<b>,1,10,15,</b>
Application Note	<b>ELISA 1:20,000-1:100,000;Western Blot 1:2,000-1:10,000;Immunochemistry 1:1,000-1:5,000</b>
Physical State	<b>Lyophilized</b>
Host Isotype	<b>IgG</b>
Target Isotype	<b>IgG (H&amp;L)</b>
Buffer	<b>0.02 M Potassium Phosphate, 0.15 M Sodium Chloride, pH 7.2</b>
Immunogen	<b>Rabbit IgG whole molecule</b>
Reconstitution Volume	<b>1.0 mL</b>
Reconstitution Buffer	<b>Restore with deionized water (or equivalent)</b>
Stabilizer	<b>10 mg/mL Bovine Serum Albumin (BSA) - Immunoglobulin and Protease free</b>
Preservative	<b>0.01% (w/v) Sodium Azide</b>

**Anti-Rabbit IgG (H&L) Pre-Adsorbed Secondary Antibody - Additional Information****Shipping Condition**

Ambient

**Purity**

This product was prepared from monospecific antiserum by immunoaffinity chromatography using Rabbit IgG coupled to agarose beads followed by solid phase adsorption(s) to remove any unwanted reactivities. Assay by immunoelectrophoresis resulted in a single precipitin arc against anti-Biotin, anti-Guinea Pig Serum, Rabbit IgG and Rabbit Serum. No reaction was observed against Human, Goat and Mouse Serum Proteins.

**Storage Condition**

Store vial at 4° C prior to restoration. For extended storage aliquot contents and freeze at -20° C or below. Avoid cycles of freezing and thawing. Centrifuge product if not completely clear after standing at room temperature. This product is stable for several weeks at 4° C as an undiluted liquid. Dilute only prior to immediate use.

**Precautions Note**

This product is for research use only and is not intended for therapeutic or diagnostic applications.

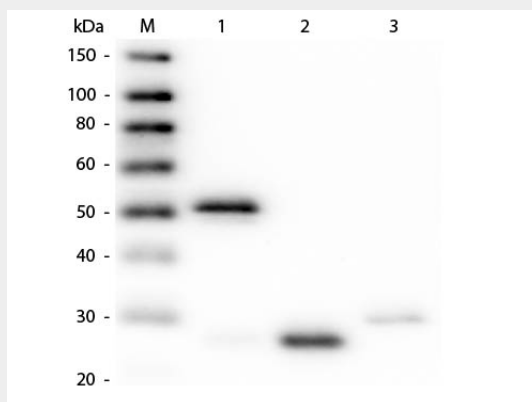
## Anti-Rabbit IgG (H&L) Pre-Adsorbed Secondary Antibody - Protein Information

### Anti-Rabbit IgG (H&L) Pre-Adsorbed Secondary Antibody - Protocols

Provided below are standard protocols that you may find useful for product applications.

- [Western Blot](#)
- [Blocking Peptides](#)
- [Dot Blot](#)
- [Immunohistochemistry](#)
- [Immunofluorescence](#)
- [Immunoprecipitation](#)
- [Flow Cytometry](#)
- [Cell Culture](#)

### Anti-Rabbit IgG (H&L) Pre-Adsorbed Secondary Antibody - Images



Western Blot of Anti-Rabbit IgG (H&L) (GUINEA PIG) Antibody (Min X Hu, Gt, Ms Serum Proteins) . Lane M: 3  $\mu$ l Molecular Ladder. Lane 1: Rabbit IgG whole molecule . Lane 2: Rabbit IgG F(ab) Fragment . Lane 3: Rabbit IgG F(c) Fragment . All samples were reduced. Load: 50 ng per lane. Block: MB-070 for 30 min at RT. Primary Antibody: Anti-Rabbit IgG (H&L) (GUINEA PIG) Antibody (Min X Hu, Gt, Ms Serum Proteins) 1:500 for 60 min at RT. Secondary antibody: Anti-Guinea Pig IgG (GOAT) Peroxidase Conjugated Antibody 1:40,000 in MB-070 for 30 min at RT. Predicted/Observed Size: 25 and 50 kDa for Rabbit IgG and Serum, 25 kDa for F(c) and F(ab). Rabbit F(c) migrates slightly higher.