

**Anti-Mouse IgG (gamma 1, 2a, 2b and 3 chain) (Peroxidase Conjugated) Secondary Antibody****Rabbit Polyclonal, Peroxidase (Horseradish)  
Catalog # ASR2741****Specification****Anti-Mouse IgG (gamma 1, 2a, 2b and 3 chain) (Peroxidase Conjugated) Secondary Antibody - Product Information**

Description	<b>Anti-MOUSE IgG (gamma 1, 2a, 2b and 3 chain) (RABBIT) Antibody Peroxidase Conjugated</b>
Host	<b>Rabbit</b>
Conjugate	<b>Peroxidase (Horseradish)</b>
Target Species	<b>Mouse</b>
Clonality	<b>Polyclonal</b>
Application	<b>,1,10,15,</b>
Application Note	<b>ELISA 1:20,000-1:100,000;Western Blot 1:2000-1:10000;Immunochemistry 1:1000-1:5000</b>
Physical State	<b>Lyophilized</b>
Host Isotype	<b>IgG</b>
Target Isotype	<b>IgG (gamma 1, 2a, 2b and 3 chain)</b>
Buffer	<b>0.02 M Potassium Phosphate, 0.15 M Sodium Chloride, pH 7.2</b>
Immunogen	<b>Highly purified mouse IgG gamma 1, gamma 2a, gamma 2b and gamma 3 proteins</b>
Reconstitution Volume	<b>500 µL</b>
Reconstitution Buffer	<b>Restore with deionized water (or equivalent)</b>
Stabilizer	<b>10 mg/mL Bovine Serum Albumin (BSA) - Immunoglobulin and Protease free</b>
Preservative	<b>0.01% (w/v) Gentamicin Sulfate</b>

**Anti-Mouse IgG (gamma 1, 2a, 2b and 3 chain) (Peroxidase Conjugated) Secondary Antibody - Additional Information****Shipping Condition**

Ambient

**Purity**

Anti-Mouse IgG subclass pan reactive Secondary Antibody was prepared from monospecific antiserum by immunoaffinity chromatography using antigens coupled to agarose beads followed by solid phase adsorption(s) to remove any unwanted reactivities. This product shows balanced reactivity to Mouse IgG1, IgG2a, IgG2b and IgG3 proteins and is suitable to screen IgG class hybridoma clones. Minimal cross reactivity is observed against other Mouse immunoglobulin classes or light chain proteins.

**Storage Condition**

Store vial at 4° C prior to restoration. For extended storage aliquot contents and freeze at -20° C

or below. Avoid cycles of freezing and thawing. Centrifuge product if not completely clear after standing at room temperature. This product is stable for several weeks at 4° C as an undiluted liquid. Dilute only prior to immediate use.

#### Precautions Note

This product is for research use only and is not intended for therapeutic or diagnostic applications.

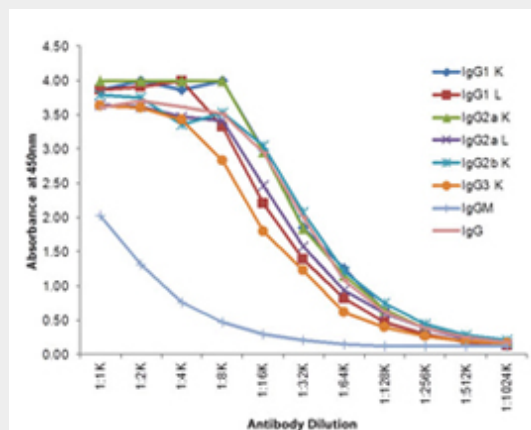
#### Anti-Mouse IgG (gamma 1, 2a, 2b and 3 chain) (Peroxidase Conjugated) Secondary Antibody - Protein Information

#### Anti-Mouse IgG (gamma 1, 2a, 2b and 3 chain) (Peroxidase Conjugated) Secondary Antibody - Protocols

Provided below are standard protocols that you may find useful for product applications.

- [Western Blot](#)
- [Blocking Peptides](#)
- [Dot Blot](#)
- [Immunohistochemistry](#)
- [Immunofluorescence](#)
- [Immunoprecipitation](#)
- [Flow Cytometry](#)
- [Cell Culture](#)

#### Anti-Mouse IgG (gamma 1, 2a, 2b and 3 chain) (Peroxidase Conjugated) Secondary Antibody - Images



Indirect ELISA of Rabbit Anti-Mouse IgG (gamma 1, 2a, 2b, and 3) antibody. Antigen: purified mouse IgG heavy and light chains. Coating amount: 0.1 µg per well. Primary antibody: Rabbit Anti-Mouse IgG (Gamma 1, 2a, 2b, and 3) HRP conjugated Antibody. Dilution series: 2-fold. Substrate: TMB .

#### Anti-Mouse IgG (gamma 1, 2a, 2b and 3 chain) (Peroxidase Conjugated) Secondary Antibody - Background

This Anti-Mouse IgG subclass pan reactive Secondary Antibody is designed for Western Blotting, ELISA and Immunohistochemistry. HRP conjugated secondary antibodies can also be used for a variety of other applications such as Assay Development.