

**Anti-Mouse IgG (H&L) (Texas Red™ Conjugated) Pre-Adsorbed Secondary Antibody  
Goat Polyclonal, Texas Red®  
Catalog # ASR2735****Specification****Anti-Mouse IgG (H&L) (Texas Red™ Conjugated) Pre-Adsorbed Secondary Antibody -  
Product Information**

Description	<b>Anti-MOUSE IgG (H&amp;L) (GOAT) Antibody Texas Red™ Conjugated (Min X Bv Ch Gt GP Ham Hs Hu Rb Rt &amp; Sh Serum Proteins) Goat Texas Red® 3.9 moles Texas Red® per mole of IgG Mouse Polyclonal ,3,4, FLISA 1:10,000-1:50,000;IF Microscopy 1:1,000-1:5,000;FlowCytometry 1:500-1:2,500 Lyophilized</b>
Host	<b>Goat</b>
Conjugate	<b>Texas Red®</b>
FP Value	<b>3.9 moles Texas Red® per mole of IgG</b>
Target Species	<b>Mouse</b>
Clonality	<b>Polyclonal</b>
Application	<b>,3,4,</b>
Application Note	<b>FLISA 1:10,000-1:50,000;IF Microscopy 1:1,000-1:5,000;FlowCytometry 1:500-1:2,500</b>
Physical State	<b>Lyophilized</b>
Host Isotype	<b>IgG</b>
Target Isotype	<b>IgG (H&amp;L)</b>
Buffer	<b>0.02 M Potassium Phosphate, 0.15 M Sodium Chloride, pH 7.2</b>
Immunogen	<b>Mouse IgG whole molecule</b>
Reconstitution Volume	<b>1.0 mL</b>
Reconstitution Buffer	<b>Restore with deionized water (or equivalent)</b>
Stabilizer	<b>10 mg/mL Bovine Serum Albumin (BSA) - Immunoglobulin and Protease free</b>
Preservative	<b>0.01% (w/v) Sodium Azide</b>

**Anti-Mouse IgG (H&L) (Texas Red™ Conjugated) Pre-Adsorbed Secondary Antibody -  
Additional Information****Shipping Condition**

Ambient

**Purity**

Mouse IgG (H&L) Antibody Texas Red™ Conjugated (Pre-Adsorbed) was prepared from monospecific antiserum by immunoaffinity chromatography using Mouse IgG coupled to agarose beads followed by solid phase adsorption(s) to remove any unwanted reactivities. Assay by immunoelectrophoresis resulted in a single precipitin arc against anti-Goat Serum, Mouse IgG and Mouse Serum. No reaction was observed against Bovine, Chicken, Goat, Guinea Pig, Hamster, Horse, Human, Rabbit, Rat and Sheep Serum Proteins.

**Storage Condition**

Store vial at 4° C prior to restoration. For extended storage aliquot contents and freeze at -20° C or below. Avoid cycles of freezing and thawing. Centrifuge product if not completely clear after standing at room temperature. This product is stable for several weeks at 4° C as an undiluted

liquid. Dilute only prior to immediate use.

#### Precautions Note

This product is for research use only and is not intended for therapeutic or diagnostic applications.

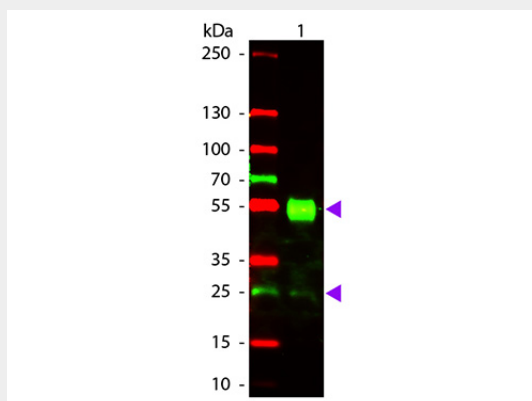
#### Anti-Mouse IgG (H&L) (Texas Red™ Conjugated) Pre-Adsorbed Secondary Antibody - Protein Information

#### Anti-Mouse IgG (H&L) (Texas Red™ Conjugated) Pre-Adsorbed Secondary Antibody - Protocols

Provided below are standard protocols that you may find useful for product applications.

- [Western Blot](#)
- [Blocking Peptides](#)
- [Dot Blot](#)
- [Immunohistochemistry](#)
- [Immunofluorescence](#)
- [Immunoprecipitation](#)
- [Flow Cytometry](#)
- [Cell Culture](#)

#### Anti-Mouse IgG (H&L) (Texas Red™ Conjugated) Pre-Adsorbed Secondary Antibody - Images



Western Blot of Goat anti-Mouse IgG Texas Red Conjugated Antibody. Lane 1: Mouse IgG. Lane 2: None. Load: 50 ng per lane. Primary antibody: None. Secondary antibody: Texas Red goat secondary antibody at 1:1,000 for 60 min at RT. Block: MB-070 for 30 min at RT. Predicted/Observed size: 28 & 55 kDa, 28 & 55 kDa for Mouse IgG. Other band(s): None.

#### Anti-Mouse IgG (H&L) (Texas Red™ Conjugated) Pre-Adsorbed Secondary Antibody - Background

Mouse IgG (H&L) Antibody Texas Red™ Conjugated (Pre-Adsorbed) antibodies are designed for immunofluorescence microscopy, fluorescence based plate assays (FLISA) and fluorescent western blotting. This product is also suitable for multiplex analysis, including multicolor imaging, utilizing various commercial platforms.