

Anti-Mouse IgG (H&L) (Fluorescein Conjugated) Pre-Adsorbed Secondary Antibody
Goat Polyclonal, Fluorescein (FITC)
Catalog # ASR2716

Specification

**Anti-Mouse IgG (H&L) (Fluorescein Conjugated) Pre-Adsorbed Secondary Antibody -
Product Information**

Description	Anti-MOUSE IgG (H&L) (GOAT) Antibody Fluorescein Conjugated (Min X Bv Ch Gt GP Ham Hs Hu Rb Rt & Sh Serum Proteins)
Host	Goat
Conjugate	Fluorescein (FITC)
FP Value	3.7 moles Fluorescein (FITC) per mole of IgG
Target Species	Mouse
Reactivity	Mouse
Clonality	Polyclonal
Application	,3,4,
Application Note	FLISA 1:10,000-1:50,000;IF Microscopy 1:1,000-1:5,000;FlowCytometry 1:200-1:500
Physical State	Lyophilized
Host Isotype	IgG
Target Isotype	IgG (H&L)
Buffer	0.02 M Potassium Phosphate, 0.15 M Sodium Chloride, pH 7.2
Immunogen	Mouse IgG whole molecule
Reconstitution Volume	1.0 mL
Reconstitution Buffer	Restore with deionized water (or equivalent)
Stabilizer	10 mg/mL Bovine Serum Albumin (BSA) - Immunoglobulin and Protease free
Preservative	0.01% (w/v) Sodium Azide

**Anti-Mouse IgG (H&L) (Fluorescein Conjugated) Pre-Adsorbed Secondary Antibody -
Additional Information**

Shipping Condition

Ambient

Purity

Secondary antibody to Mouse IgG was prepared from monospecific antiserum by immunoaffinity chromatography using Mouse IgG coupled to agarose beads followed by solid phase adsorption(s) to remove any unwanted reactivities. Assay by immunoelectrophoresis resulted in a single precipitin arc against anti-Fluorescein, anti-Goat Serum, Mouse IgG and Mouse Serum. No reaction was observed against Bovine, Chicken, Goat, Guinea Pig, Hamster, Horse, Human, Rabbit, Rat and Sheep Serum Proteins.

Storage Condition

Store anti mouse secondary antibody at 4° C prior to restoration. For extended storage aliquot

antibody and freeze at -20° C or below. Avoid cycles of freezing and thawing. Centrifuge product if not completely clear after standing at room temperature. This product is stable for several weeks at 4° C as an undiluted liquid. Dilute only prior to immediate use.

Precautions Note

This product is for research use only and is not intended for therapeutic or diagnostic applications.

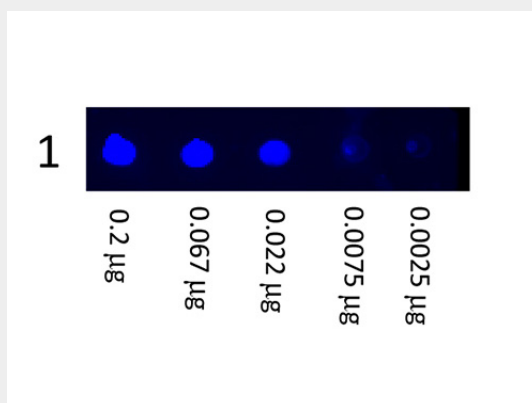
Anti-Mouse IgG (H&L) (Fluorescein Conjugated) Pre-Adsorbed Secondary Antibody - Protein Information

Anti-Mouse IgG (H&L) (Fluorescein Conjugated) Pre-Adsorbed Secondary Antibody - Protocols

Provided below are standard protocols that you may find useful for product applications.

- [Western Blot](#)
- [Blocking Peptides](#)
- [Dot Blot](#)
- [Immunohistochemistry](#)
- [Immunofluorescence](#)
- [Immunoprecipitation](#)
- [Flow Cytometry](#)
- [Cell Culture](#)

Anti-Mouse IgG (H&L) (Fluorescein Conjugated) Pre-Adsorbed Secondary Antibody - Images



Dot Blot showing the detection of Mouse IgG. A three-fold serial dilution of Mouse IgG starting at 200ng was spotted onto 0.45 µm nitrocellulose. After blocking in 5% Blotto 1 Hour at 20°C, Anti-Mouse IgG (H&L) (GOAT) Antibody Fluorescein Conjugated secondary antibody was used at 1:1000 in Blocking Buffer for Fluorescent Western Blotting and imaged using the Bio-Rad VersaDoc® 4000 MP.

Anti-Mouse IgG (H&L) (Fluorescein Conjugated) Pre-Adsorbed Secondary Antibody - Background

FITC Conjugated Secondary Antibodies are designed for immunofluorescence microscopy, fluorescence based plate assays (FLISA) and fluorescent western blotting. This product is also suitable for multiplex analysis, including multicolor imaging, utilizing various commercial platforms.