

**Anti-Human IgG (H&L) (Alkaline Phosphatase Conjugated) Secondary Antibody**  
**Chicken Polyclonal, Alkaline Phosphatase (Calf Intestine)**  
**Catalog # ASR2706**

**Specification**

---

**Anti-Human IgG (H&L) (Alkaline Phosphatase Conjugated) Secondary Antibody - Product Information**

Description	<b>Anti-HUMAN IgG (H&amp;L) (CHICKEN) Antibody</b>
Host	<b>Alkaline Phosphatase Conjugated</b>
Conjugate	<b>Chicken</b>
Target Species	<b>Alkaline Phosphatase (Calf Intestine)</b>
Clonality	<b>Human</b>
Application	<b>Polyclonal</b>
Application Note	<b>,1,2,10, ELISA 1:2,000-1:10,000;Western Blot 1:500-1:2,500;Immunohistochemistry 1:200-1:1,000</b>
Physical State	<b>Liquid (sterile filtered)</b>
Host Isotype	<b>IgG</b>
Target Isotype	<b>IgG (H&amp;L)</b>
Buffer	<b>0.05 M Tris Chloride, 0.15M Sodium Chloride, 0.001M Magnesium Chloride, 0.0001M Zinc Chloride, 50% (v/v) Glycerol; pH 8.0</b>
Immunogen	<b>Human IgG whole molecule</b>
Stabilizer	<b>10 mg/mL Bovine Serum Albumin (BSA) - Immunoglobulin and Protease free</b>
Preservative	<b>0.01% (w/v) Sodium Azide</b>

**Anti-Human IgG (H&L) (Alkaline Phosphatase Conjugated) Secondary Antibody - Additional Information**

**Shipping Condition**

Wet Ice

**Purity**

This product was prepared from monospecific antiserum by immunoaffinity chromatography using Human IgG coupled to agarose beads followed by solid phase adsorption(s) to remove any unwanted reactivities. Assay by immunoelectrophoresis resulted in a single precipitin arc against anti-Alkaline Phosphatase (calf intestine), anti-Chicken Serum, Human IgG and Human Serum.

**Storage Condition**

Store vial at 4° C before opening. DO NOT FREEZE. This product is stable at 4° C as an undiluted liquid. Dilute only prior to immediate use. Freezing alkaline phosphatase conjugates will result in a substantial loss of enzymatic activity.

**Precautions Note**

This product is for research use only and is not intended for therapeutic or diagnostic applications.

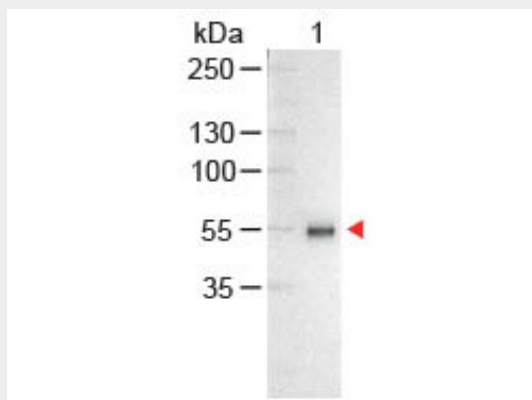
## Anti-Human IgG (H&L) (Alkaline Phosphatase Conjugated) Secondary Antibody - Protein Information

## Anti-Human IgG (H&L) (Alkaline Phosphatase Conjugated) Secondary Antibody - Protocols

Provided below are standard protocols that you may find useful for product applications.

- [Western Blot](#)
- [Blocking Peptides](#)
- [Dot Blot](#)
- [Immunohistochemistry](#)
- [Immunofluorescence](#)
- [Immunoprecipitation](#)
- [Flow Cytometry](#)
- [Cell Culture](#)

## Anti-Human IgG (H&L) (Alkaline Phosphatase Conjugated) Secondary Antibody - Images



Western Blot of Chicken anti-Human IgG Antibody Alkaline Phosphatase Conjugated Lane 1: Human IgG Load: 100 ng per lane Secondary antibody: Human IgG (H&L) Antibody Alkaline Phosphatase Conjugated at 1:1,000 for 60 min at RT Block: MB-070 for 30 min at RT Predicted/Observed size: 55 and 28 kDa, 55 kDa