

**Anti-Human IgG IgA IgM (H&L) (Alkaline Phosphatase Conjugated) Secondary Antibody  
Goat Polyclonal, Alkaline Phosphatase (Calf Intestine)  
Catalog # ASR2690**

**Specification**

**Anti-Human IgG IgA IgM (H&L) (Alkaline Phosphatase Conjugated) Secondary Antibody -  
Product Information**

Description	<b>Anti-HUMAN IgG IgA IgM (H&amp;L) (GOAT) Antibody Alkaline Phosphatase Conjugated</b>
Host	<b>Goat</b>
Conjugate	<b>Alkaline Phosphatase (Calf Intestine)</b>
Target Species	<b>Human</b>
Clonality	<b>Polyclonal</b>
Application	<b>,1,10,15,</b>
Application Note	<b>ELISA 1:2,000-1:10,000;Western Blot 1:500-1:3,000;Immunochemistry 1:200-1:1,000</b>
Physical State	<b>Liquid (sterile filtered)</b>
Host Isotype	<b>IgG</b>
Target Isotype	<b>IgG IgA IgM</b>
Buffer	<b>0.05 M Tris Chloride, 0.15M Sodium Chloride, 0.001M Magnesium Chloride, 0.0001M Zinc Chloride, 50% (v/v) Glycerol; pH 8.0</b>
Immunogen	<b>Human IgG, IgA and IgM whole molecule</b>
Stabilizer	<b>10 mg/mL Bovine Serum Albumin (BSA) - Immunoglobulin and Protease free</b>
Preservative	<b>0.1% (w/v) Sodium Azide</b>

**Anti-Human IgG IgA IgM (H&L) (Alkaline Phosphatase Conjugated) Secondary Antibody -  
Additional Information**

**Shipping Condition**

Wet Ice

**Purity**

This product was prepared from monospecific antiserum by immunoaffinity chromatography using Human antigens coupled to agarose beads followed by solid phase adsorption(s) to remove any unwanted reactivities. Assay by immunoelectrophoresis resulted in a single precipitin arc against anti-Alkaline Phosphatase (calf intestine) and anti-Goat Serum. This reagent is suitable for the detection of all human immunoglobulin isotypes, subclasses and chain combinations.

**Storage Condition**

Store vial at 4° C before opening. DO NOT FREEZE. This product is stable at 4° C as an undiluted liquid. Dilute only prior to immediate use. Freezing alkaline phosphatase conjugates will result in a substantial loss of enzymatic activity.

**Precautions Note**

This product is for research use only and is not intended for therapeutic or diagnostic applications.

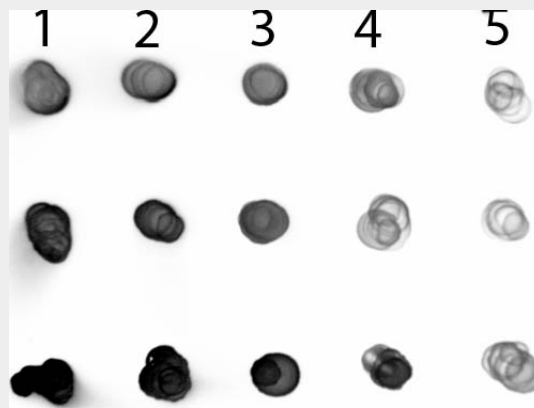
## Anti-Human IgG IgA IgM (H&L) (Alkaline Phosphatase Conjugated) Secondary Antibody - Protein Information

## Anti-Human IgG IgA IgM (H&L) (Alkaline Phosphatase Conjugated) Secondary Antibody - Protocols

Provided below are standard protocols that you may find useful for product applications.

- [Western Blot](#)
- [Blocking Peptides](#)
- [Dot Blot](#)
- [Immunohistochemistry](#)
- [Immunofluorescence](#)
- [Immunoprecipitation](#)
- [Flow Cytometry](#)
- [Cell Culture](#)

## Anti-Human IgG IgA IgM (H&L) (Alkaline Phosphatase Conjugated) Secondary Antibody - Images



Dot Blot of Goat anti-Human IgG IgA IgM Antibody Alkaline Phosphatase Conjugated. Antigen: Row 1 - Human IgG Row 2 - Human IgA Row 3 - Human IgM. Load: Lane 1 - 200 ng Lane 2 - 66.7 ng Lane 3 - 22.2 ng Lane 4 - 7.41 ng Lane 5 - 2.47 ng. Primary antibody: n/a. Secondary antibody: Goat anti-Human IgG IgA IgM Antibody Alkaline Phosphatase Conjugated at 1:1,000 for 1 HR at RT. Block: MB-070 for 1 HR at RT.