

**Anti-Guinea Pig IgG (H&L) (Fluorescein Conjugated) Pre-Adsorbed Secondary Antibody  
Donkey Polyclonal, Fluorescein (FITC)  
Catalog # ASR2588**

**Specification**

**Anti-Guinea Pig IgG (H&L) (Fluorescein Conjugated) Pre-Adsorbed Secondary Antibody -  
Product Information**

Description	<b>Anti-GUINEA PIG IgG (H&amp;L) (DONKEY) Antibody Fluorescein Conjugated (Min X Bv Ch Gt Ham Hs Hu Ms Rb Rt &amp; Sh Serum Proteins)</b>
Host	<b>Donkey</b>
Conjugate	<b>Fluorescein (FITC)</b>
FP Value	<b>3.4 moles Fluorescein (FITC) per mole of IgG</b>
Target Species	<b>Guinea Pig</b>
Reactivity	<b>Guinea Pig</b>
Clonality	<b>Polyclonal</b>
Application	<b>,3,</b>
Application Note	<b>FLISA 1:10,000-1:50,000;IF Microscopy 1:1,000-1:5,000</b>
Physical State	<b>Lyophilized</b>
Host Isotype	<b>IgG</b>
Target Isotype	<b>IgG (H&amp;L)</b>
Buffer	<b>0.02 M Potassium Phosphate, 0.15 M Sodium Chloride, pH 7.2</b>
Immunogen	<b>Guinea Pig IgG whole molecule</b>
Reconstitution Volume	<b>1.0 mL</b>
Reconstitution Buffer	<b>Restore with deionized water (or equivalent)</b>
Stabilizer	<b>10 mg/mL Bovine Serum Albumin (BSA) - Immunoglobulin and Protease free</b>
Preservative	<b>0.01% (w/v) Sodium Azide</b>

**Anti-Guinea Pig IgG (H&L) (Fluorescein Conjugated) Pre-Adsorbed Secondary Antibody -  
Additional Information**

**Shipping Condition**

Ambient

**Purity**

This product was prepared from monospecific antiserum by immunoaffinity chromatography using Guinea Pig IgG coupled to agarose beads followed by conjugation to fluorochrome and extensive dialysis against the buffer stated above. Assay by immunoelectrophoresis resulted in a single precipitin arc against anti-Donkey Serum, Guinea Pig IgG and Guinea Pig Serum. No reaction was observed against Bovine, Chicken, Goat, Hamster, Horse, Human, Mouse, Rabbit, Rat and Sheep Serum Proteins. This antibody will react with heavy chains of Guinea Pig IgG and with light chains of most Guinea Pig immunoglobulins.

**Storage Condition**

Store vial at 4° C prior to restoration. For extended storage aliquot contents and freeze at -20° C or below. Avoid cycles of freezing and thawing. Centrifuge product if not completely clear after standing at room temperature. This product is stable for several weeks at 4° C as an undiluted liquid. Dilute only prior to immediate use.

#### Precautions Note

This product is for research use only and is not intended for therapeutic or diagnostic applications.

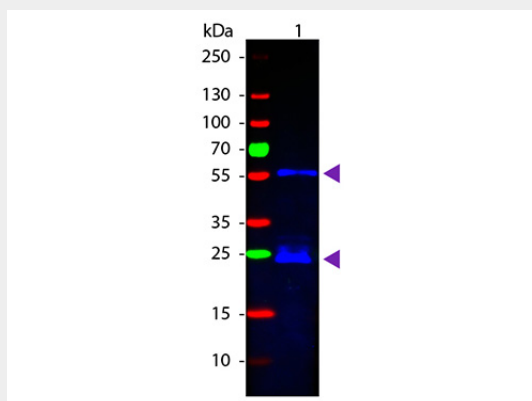
#### Anti-Guinea Pig IgG (H&L) (Fluorescein Conjugated) Pre-Adsorbed Secondary Antibody - Protein Information

#### Anti-Guinea Pig IgG (H&L) (Fluorescein Conjugated) Pre-Adsorbed Secondary Antibody - Protocols

Provided below are standard protocols that you may find useful for product applications.

- [Western Blot](#)
- [Blocking Peptides](#)
- [Dot Blot](#)
- [Immunohistochemistry](#)
- [Immunofluorescence](#)
- [Immunoprecipitation](#)
- [Flow Cytometry](#)
- [Cell Culture](#)

#### Anti-Guinea Pig IgG (H&L) (Fluorescein Conjugated) Pre-Adsorbed Secondary Antibody - Images



Western Blot of Donkey anti-Guinea Pig IgG Fluorescein Conjugated Antibody. Lane 1: Guinea Pig IgG. Lane 2: None. Load: 50 ng. Primary antibody: None. Secondary antibody: Fluorescein donkey secondary antibody at 1:1,000 for 60 min at RT. Block: MB-070 for 30 min at RT. Predicted/Observed size: 28 & 55 kDa, 28 & 55 kDa for Guinea Pig IgG. Other band(s): None.

#### Anti-Guinea Pig IgG (H&L) (Fluorescein Conjugated) Pre-Adsorbed Secondary Antibody - Background

This product is designed for immunofluorescence microscopy, fluorescence based plate assays (FLISA) and fluorescent western blotting. This product is also suitable for multiplex analysis, including multicolor imaging, utilizing various commercial platforms.