

**Anti-Guinea Pig IgG (H&L) (Rhodamine Conjugated) Pre-Adsorbed Secondary Antibody
Donkey Polyclonal, Rhodamine (TRITC)
Catalog # ASR2587****Specification****Anti-Guinea Pig IgG (H&L) (Rhodamine Conjugated) Pre-Adsorbed Secondary Antibody -
Product Information**

Description	Anti-GUINEA PIG IgG (H&L) (DONKEY) Antibody Rhodamine Conjugated (Min X Bv Ch Gt Ham Hs Hu Ms Rb Rt & Sh Serum Proteins)
Host	Donkey
Conjugate	Rhodamine (TRITC)
FP Value	2.4 moles Rhodamine (TRITC) per mole of IgG
Target Species	Guinea Pig
Reactivity	Guinea Pig
Clonality	Polyclonal
Application	,3,4,
Application Note	FLISA 1:10,000-1:50,000;IF Microscopy 1:1,000-1:5,000;FlowCytometry 1:500-1:2,500
Physical State	Lyophilized
Host Isotype	IgG
Target Isotype	IgG (H&L)
Buffer	0.02 M Potassium Phosphate, 0.15 M Sodium Chloride, pH 7.2
Immunogen	Guinea Pig IgG whole molecule
Reconstitution Volume	1.0 mL
Reconstitution Buffer	Restore with deionized water (or equivalent)
Stabilizer	10 mg/mL Bovine Serum Albumin (BSA) - Immunoglobulin and Protease free
Preservative	0.01% (w/v) Sodium Azide

**Anti-Guinea Pig IgG (H&L) (Rhodamine Conjugated) Pre-Adsorbed Secondary Antibody -
Additional Information****Shipping Condition**

Ambient

Purity

This product was prepared from monospecific antiserum by immunoaffinity chromatography using Guinea Pig IgG coupled to agarose beads followed by conjugation to fluorochrome and extensive dialysis against the buffer stated above. Assay by immunoelectrophoresis resulted in a single precipitin arc against anti-Donkey Serum, Guinea Pig IgG and Guinea Pig Serum. No reaction was observed against Bovine, Chicken, Goat, Hamster, Horse, Human, Mouse, Rabbit, Rat and Sheep Serum Proteins. This antibody will react with heavy chains of Guinea Pig IgG and with light chains of most Guinea Pig immunoglobulins.

Storage Condition

Store vial at 4° C prior to restoration. For extended storage aliquot contents and freeze at -20° C or below. Avoid cycles of freezing and thawing. Centrifuge product if not completely clear after standing at room temperature. This product is stable for several weeks at 4° C as an undiluted liquid. Dilute only prior to immediate use.

Precautions Note

This product is for research use only and is not intended for therapeutic or diagnostic applications.

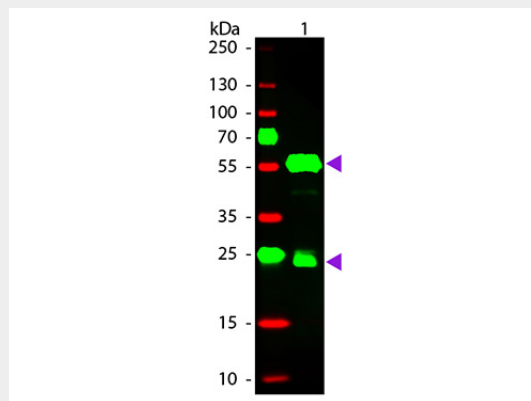
Anti-Guinea Pig IgG (H&L) (Rhodamine Conjugated) Pre-Adsorbed Secondary Antibody - Protein Information

Anti-Guinea Pig IgG (H&L) (Rhodamine Conjugated) Pre-Adsorbed Secondary Antibody - Protocols

Provided below are standard protocols that you may find useful for product applications.

- [Western Blot](#)
- [Blocking Peptides](#)
- [Dot Blot](#)
- [Immunohistochemistry](#)
- [Immunofluorescence](#)
- [Immunoprecipitation](#)
- [Flow Cytometry](#)
- [Cell Culture](#)

Anti-Guinea Pig IgG (H&L) (Rhodamine Conjugated) Pre-Adsorbed Secondary Antibody - Images



Western Blot of Donkey anti-Guinea Pig IgG Pre-Absorbed Rhodamine Conjugated Secondary Antibody. Lane 1: Guinea Pig IgG. Lane 2: None. Load: 50 ng per lane. Primary antibody: None. Secondary antibody: Rhodamine donkey secondary antibody at 1:1,000 for 60 min at RT. Block: MB-070 for 30 min at RT. Predicted/Observed size: 25 & 55 kDa, 25 & 55 kDa for Guinea Pig IgG. Other band(s): None.

Anti-Guinea Pig IgG (H&L) (Rhodamine Conjugated) Pre-Adsorbed Secondary Antibody - Background

This product is designed for immunofluorescence microscopy, fluorescence based plate assays

(FLISA) and fluorescent western blotting. This product is also suitable for multiplex analysis, including multicolor imaging, utilizing various commercial platforms.