

Anti-Monkey IgM (mu chain) (Biotin Conjugated) Secondary Antibody
Goat Polyclonal, Biotin
Catalog # ASR2508**Specification****Anti-Monkey IgM (mu chain) (Biotin Conjugated) Secondary Antibody - Product Information**

Description	Anti-MONKEY IgM (mu chain) (GOAT) Antibody Biotin Conjugated
Host	Goat
Conjugate	Biotin
FP Value	10-20 moles Biotin per mole of IgG
Target Species	Monkey
Clonality	Polyclonal
Application	,1,10,15,
Application Note	ELISA 1:20,000-1:300,000;Western Blot 1:2,000-1:10,000;Immunochemistry 1:1,000-1:5,000
Physical State	Lyophilized
Host Isotype	IgG
Target Isotype	IgM μ chain
Buffer	0.02 M Potassium Phosphate, 0.15 M Sodium Chloride, pH 7.2
Immunogen	Anti-Monkey IgM (mu) antibody was produced by repeated immunization with monkey IgM mu heavy chain in goat.
Reconstitution Volume	1.0 mL
Reconstitution Buffer	Restore with deionized water (or equivalent)
Stabilizer	10 mg/mL Bovine Serum Albumin (BSA) - Immunoglobulin and Protease free
Preservative	0.01% (w/v) Sodium Azide

Anti-Monkey IgM (mu chain) (Biotin Conjugated) Secondary Antibody - Additional Information**Shipping Condition**

Ambient

Purity

This product was prepared from monospecific antiserum by immunoaffinity chromatography using Monkey IgM coupled to agarose beads followed by solid phase adsorption(s) to remove any unwanted reactivities. Assay by immunoelectrophoresis resulted in a single precipitin arc against anti-biotin, anti-Goat Serum, Monkey IgM and Monkey Serum. No reaction was observed against Monkey IgA or Monkey IgG.

Storage Condition

Store vial at 4° C prior to restoration. For extended storage aliquot contents and freeze at -20° C or below. Avoid cycles of freezing and thawing. Centrifuge product if not completely clear after standing at room temperature. This product is stable for several weeks at 4° C as an undiluted

liquid. Dilute only prior to immediate use.

Precautions Note

This product is for research use only and is not intended for therapeutic or diagnostic applications.

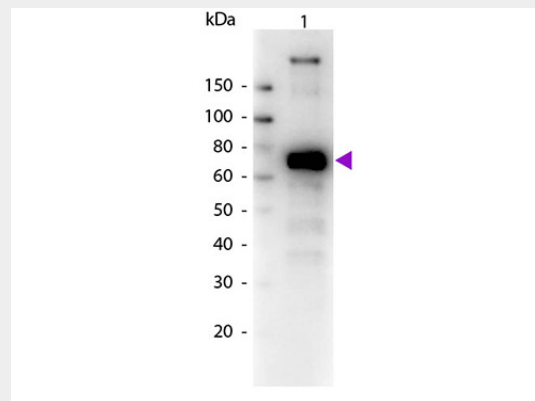
Anti-Monkey IgM (mu chain) (Biotin Conjugated) Secondary Antibody - Protein Information

Anti-Monkey IgM (mu chain) (Biotin Conjugated) Secondary Antibody - Protocols

Provided below are standard protocols that you may find useful for product applications.

- [Western Blot](#)
- [Blocking Peptides](#)
- [Dot Blot](#)
- [Immunohistochemistry](#)
- [Immunofluorescence](#)
- [Immunoprecipitation](#)
- [Flow Cytometry](#)
- [Cell Culture](#)

Anti-Monkey IgM (mu chain) (Biotin Conjugated) Secondary Antibody - Images



Western Blot of Biotin conjugated Goat Anti-Monkey IgM (mu chain) secondary antibody. Lane 1: Monkey IgM. Lane 2: None. Load: 50 ng per lane. Primary antibody: None. Secondary antibody: Biotin goat secondary antibody at 1:1,000 for 60 min at RT. Block: MB-070 for 30 min t RT. Predicted/Observed size: 72 kDa, 72 kDa for Monkey IgM. Other band(s): None.

Product	Gt-a-Monkey IgG	Gt-a-Monkey IgA	Gt-a-Monkey IgM
Rhesus Serum	+	+	+
Baboon Serum	+	+	+
Cynomolgus Serum	+	+	+
Rhesus IgG	+		
Human IgA		+	
Human IgM			+

This table displays additional reactivity among various species of serum and immunoglobulin. A (+) indicates antibody reactivity to the corresponding target.

Anti-Monkey IgM (mu chain) (Biotin Conjugated) Secondary Antibody - Background

Anti-Monkey IgM (mu chain) biotin conjugated antibody generated in goat detects specifically monkey IgM (mu chain). This secondary biotin conjugated antibody anti-Monkey is ideal for investigators who routinely perform titration assays, western-blot, immunoprecipitation and more generally immunoassays.