

**Anti-Human IgM (mu chain) (Alkaline Phosphatase Conjugated) Secondary Antibody
Goat Polyclonal, Alkaline Phosphatase (Calf Intestine)
Catalog # ASR2469**

Specification

**Anti-Human IgM (mu chain) (Alkaline Phosphatase Conjugated) Secondary Antibody -
Product Information**

Description	Anti-HUMAN IgM (mu chain) (GOAT) Antibody Alkaline Phosphatase Conjugated
Host	Goat
Conjugate	Alkaline Phosphatase (Calf Intestine)
Target Species	Human
Reactivity	Human
Clonality	Polyclonal
Application	,1,10,15,
Application Note	ELISA 1:2,000-1:10,000;Western Blot 1:500-1:2,500;Immunochemistry 1:200-1:1,000
Physical State	Liquid (sterile filtered)
Host Isotype	IgG
Target Isotype	IgM μ chain
Buffer	0.05 M Tris Chloride, 0.15M Sodium Chloride, 0.001M Magnesium Chloride, 0.0001M Zinc Chloride, 50% (v/v) Glycerol; pH 8.0
Immunogen	Anti-Human IgM mu heavy chain antibody was produced by repeated immunization with Human IgM mu heavy chain in goat.
Stabilizer	10 mg/mL Bovine Serum Albumin (BSA) - Immunoglobulin and Protease free
Preservative	0.01% (w/v) Sodium Azide

**Anti-Human IgM (mu chain) (Alkaline Phosphatase Conjugated) Secondary Antibody -
Additional Information**

Shipping Condition

Wet Ice

Purity

This product was prepared from monospecific antiserum by immunoaffinity chromatography using Human IgM coupled to agarose beads followed by solid phase adsorption(s) to remove any unwanted reactivities. Assay by immunoelectrophoresis resulted in a single precipitin arc against anti-Alkaline Phosphatase (calf intestine), anti-Goat Serum, Human IgM and Human Serum. No reaction was observed against Human IgG F(c). Specificity was confirmed by ELISA minimal cross reactivity against other human heavy or light chain isotypes.

Storage Condition

Store vial at 4° C before opening. DO NOT FREEZE. This product is stable at 4° C as an undiluted liquid. Dilute only prior to immediate use. Freezing alkaline phosphatase conjugates will result in a

substantial loss of enzymatic activity.

Precautions Note

This product is for research use only and is not intended for therapeutic or diagnostic applications.

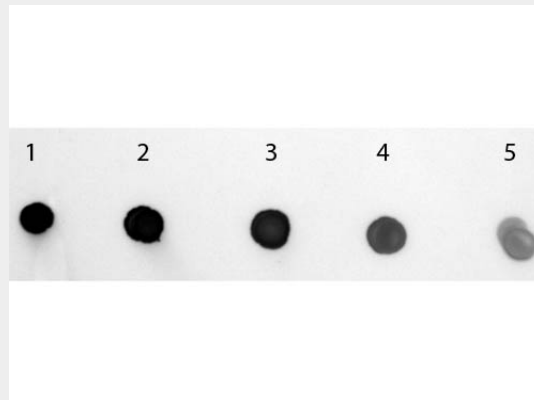
Anti-Human IgM (mu chain) (Alkaline Phosphatase Conjugated) Secondary Antibody - Protein Information

Anti-Human IgM (mu chain) (Alkaline Phosphatase Conjugated) Secondary Antibody - Protocols

Provided below are standard protocols that you may find useful for product applications.

- [Western Blot](#)
- [Blocking Peptides](#)
- [Dot Blot](#)
- [Immunohistochemistry](#)
- [Immunofluorescence](#)
- [Immunoprecipitation](#)
- [Flow Cytometry](#)
- [Cell Culture](#)

Anti-Human IgM (mu chain) (Alkaline Phosphatase Conjugated) Secondary Antibody - Images



Dot Blot of Goat anti-Human IgM (mu chain) Antibody Alkaline Phosphatase Conjugated. Antigen: Human IgM. Load: Lane 1 - 200 ng Lane 2 - 66.67 ng Lane 3 - 22.22 ng Lane 4 - 7.41 ng Lane 5 - 2.47 ng. Primary antibody: none. Secondary antibody: Goat anti-Human IgM (mu chain) Antibody Alkaline Phosphatase Conjugated at 1:1,000 for 60 min at RT. Block: MB-070 for 1 HR at RT. Visualized using NBT-100 Alkaline Phosphatase Substrate for 30 seconds at RT.

Anti-Human IgM (mu chain) (Alkaline Phosphatase Conjugated) Secondary Antibody - Background

Anti-Human IgM mu heavy chain antibody generated in goat detects specifically Human IgM mu heavy chain. This secondary antibody anti-Human is ideal for investigators who routinely perform ELISA, Sandwich ELISA, titration assays, western-blot, immunoprecipitation and more generally immunoassays.