

HUMAN IgG F(ab')₂
Catalog # ASR2302**Specification****HUMAN IgG F(ab')₂ - Product Information**

Description	HUMAN IgG F(ab')₂ fragment
Conjugate	Unconjugated
Application	,1,10,
Application Note	ELISA 1:5000-1:50,000;Western Blot
Physical State	1:1000
Host Isotype	Lyophilized
Buffer	IgG F(ab')₂
Species of Origin	0.02 M Potassium Phosphate, 0.15 M
Reconstitution Volume	Sodium Chloride, pH 7.2
Reconstitution Buffer	Human
Stabilizer	1.0 mL
Preservative	Restore with deionized water (or
	equivalent)
	None
	0.01% (w/v) Sodium Azide

HUMAN IgG F(ab')₂ - Additional Information**Shipping Condition**

Ambient

Purity

Human IgG F(ab')₂ was prepared from normal serum by a multi-step process which includes delipidation, salt fractionation, ion exchange chromatography and pepsin digestion followed by chromatographic separation and extensive dialysis against the buffer stated above. Assay by immunoelectrophoresis resulted in a single precipitin arc against anti-Human Serum, anti-Human IgG and anti-Human IgG F(ab')₂. No reaction was observed against anti-Human IgG F(c) or anti-Pepsin.

Storage Condition

Store vial at 4° C prior to restoration. For extended storage aliquot contents and freeze at -20° C or below. Avoid cycles of freezing and thawing. Centrifuge product if not completely clear after standing at room temperature. This product is stable for several weeks at 4° C as an undiluted liquid. Dilute only prior to immediate use.

Precautions Note

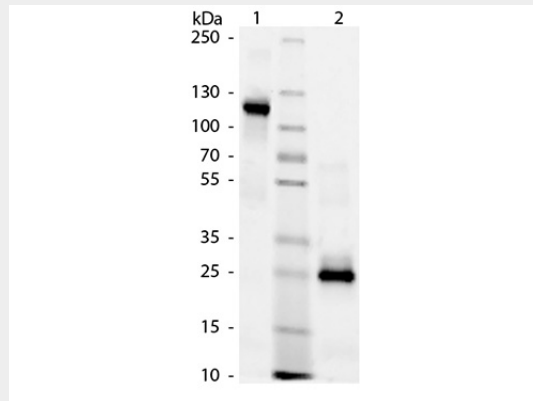
This product is for research use only and is not intended for therapeutic or diagnostic applications.

HUMAN IgG F(ab')₂ - Protein Information**HUMAN IgG F(ab')₂ - Protocols**

Provided below are standard protocols that you may find useful for product applications.

- [Western Blot](#)
- [Blocking Peptides](#)
- [Dot Blot](#)
- [Immunohistochemistry](#)
- [Immunofluorescence](#)
- [Immunoprecipitation](#)
- [Flow Cytometry](#)
- [Cell Culture](#)

HUMAN IgG F(ab')₂ - Images



SDS-Page of Human IgG F(ab')₂ Fragment. Lane 1: Human F(ab')₂ - Non-Reduced. Lane 2: Human F(ab')₂ - Reduced. Load: 1.0 µg per lane. Predicted/observed size: 25 kDa - Reduced, 120 kDa - Non-Reduced for F(ab')₂ fragment. Other band(s): None.

HUMAN IgG F(ab')₂ - Background

Human IgG F(ab')₂ purified protein is a proteolytic fragment of immunoglobulin G (IgG) obtained by limited digestion with the enzyme pepsin under controlled conditions of temperature, time and pH. Human IgG F(ab')₂ molecules lack the Fc portion of Human IgG and therefore receptors that bind Human IgG Fc will not bind Human IgG F(ab')₂ molecules.