

Mouse IgM Kappa (κ) isotype Control
Monoclonal MMK IgM , Unconjugated
Catalog # ASR2274**Specification**

Mouse IgM Kappa (κ) isotype Control - Product Information

Description	MOUSE IgM Kappa (κ) isotype control
Conjugate	Unconjugated
Clonality	Monoclonal
Application	,4,
Application Note	FlowCytometry 1:1000-1:5000
Physical State	Liquid (sterile filtered)
Host Isotype	IgM
Buffer	0.1 M Tris Chloride, 0.5 M Sodium Chloride, pH 8.0
Species of Origin	Mouse
Preservative	0.1% (w/v) Sodium Azide

Mouse IgM Kappa (κ) isotype Control - Additional Information**Shipping Condition**

Wet Ice

Purity

Mouse Isotype control has been prepared from concentrated cell culture supernatant by immunoaffinity chromatography using protein A. In an Ouchterlony double diffusion assay the material is non-reactive with antisera to mouse IgG1, IgG2a, IgG2b, IgG3 and IgA. Assay by immunoelectrophoresis resulted in a single precipitin arc against anti-Mouse IgM mu and anti-Mouse serum. Light and heavy chain composition confirmed by Elisa.

Storage Condition

Store vial at 4° C prior to opening. Mouse IgM Kappa isotype control is stable 4° C as an undiluted liquid. Dilute only prior to immediate use. For extended storage mix with an equal volume of glycerol, aliquot contents and freeze at -20° C or below. Avoid cycles of freezing and thawing.

Precautions Note

This product is for research use only and is not intended for therapeutic or diagnostic applications.

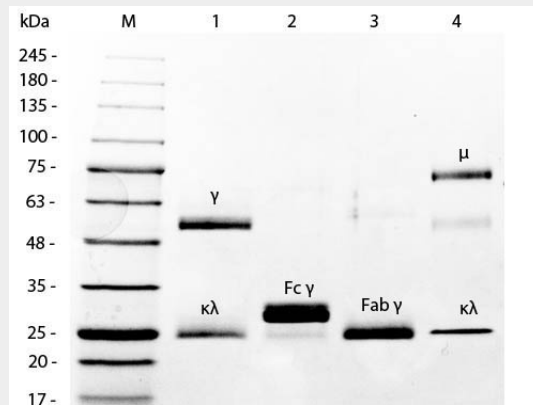
Mouse IgM Kappa (κ) isotype Control - Protein Information**Mouse IgM Kappa (κ) isotype Control - Protocols**

Provided below are standard protocols that you may find useful for product applications.

- [Western Blot](#)
- [Blocking Peptides](#)

- [Dot Blot](#)
- [Immunohistochemistry](#)
- [Immunofluorescence](#)
- [Immunoprecipitation](#)
- [Flow Cytometry](#)
- [Cell Culture](#)

Mouse IgM Kappa (κ) isotype Control - Images



SDS-PAGE of Mouse IgM Kappa isotype control . Lane 1: 5 μ L Opal Prestained Marker . Lane 2: Reduced Mouse IgG Whole Molecule . Lane 3: Reduced Mouse F(c) Fragment . Lane 4: Reduced Mouse F(ab) Fragment . Lane 5: Mouse IgM Kappa isotype control . Load: 1 μ g per lane. Predicted/Observed size: IgG at 50 and 25 kDa; F(c) at 25 kDa; F(ab') at 25 kDa; IgM ? at 70 and 23 kDa. Observed F(c) Fragment migrates slightly higher.

Mouse IgM Kappa (κ) isotype Control - Background

Immunoglobulin M is the largest antibody isotype and the first to be secreted against an initial exposure to antigen. IgM is predominantly produced in the spleen. Formed from covalently linking 5 immunoglobulins together, the approximate molecular weight of IgM is 900kDa and possesses 10 binding sites (though due to the size of most antigens, not all sites are capable of binding at once). Due to this large size, IgM is typically isolated to the serum. This isotype control possesses kappa light chains.