

**Anti-Monkey IgM (mu chain) (Fluorescein Conjugated) Secondary Antibody**  
**Goat Polyclonal, Fluorescein (FITC)**  
**Catalog # ASR2237****Specification****Anti-Monkey IgM (mu chain) (Fluorescein Conjugated) Secondary Antibody - Product Information**

Description	<b>Anti-MONKEY IgM (mu chain) (GOAT) Antibody Fluorescein Conjugated</b>
Host	<b>Goat</b>
Conjugate	<b>Fluorescein (FITC)</b>
FP Value	<b>3.0 moles Fluorescein (FITC) per mole of IgG</b>
Target Species	<b>Monkey</b>
Clonality	<b>Polyclonal</b>
Application	<b>,3,4,</b>
Application Note	<b>FLISA 1:10,000-1:50,000;IF Microscopy 1:1,000-1:5,000;FlowCytometry 1:500-1:2,500</b>
Physical State	<b>Lyophilized</b>
Host Isotype	<b>IgG</b>
Target Isotype	<b>IgM <math>\mu</math> chain</b>
Buffer	<b>0.02 M Potassium Phosphate, 0.15 M Sodium Chloride, pH 7.2</b>
Immunogen	<b>Monkey IgM mu heavy chain</b>
Reconstitution Volume	<b>1.0 mL</b>
Reconstitution Buffer	<b>Restore with deionized water (or equivalent)</b>
Stabilizer	<b>10 mg/mL Bovine Serum Albumin (BSA) - Immunoglobulin and Protease free</b>
Preservative	<b>0.01% (w/v) Sodium Azide</b>

**Anti-Monkey IgM (mu chain) (Fluorescein Conjugated) Secondary Antibody - Additional Information****Shipping Condition**

Ambient

**Purity**

This product was prepared from monospecific antiserum by immunoaffinity chromatography using Monkey IgM coupled to agarose beads followed by solid phase adsorption(s) to remove any unwanted reactivities. Assay by immunoelectrophoresis resulted in a single precipitin arc against anti-Fluorescein, anti-Goat Serum, Monkey IgM and Monkey Serum. No reaction was observed against Monkey IgG or Monkey IgA. Specificity was confirmed by ELISA at less than 1% cross-reactivity against other Monkey heavy or light chain isotypes.

**Storage Condition**

Store vial at 4° C prior to restoration. For extended storage aliquot contents and freeze at -20° C or below. Avoid cycles of freezing and thawing. Centrifuge product if not completely clear after standing at room temperature. This product is stable for several weeks at 4° C as an undiluted

liquid. Dilute only prior to immediate use.

#### Precautions Note

This product is for research use only and is not intended for therapeutic or diagnostic applications.

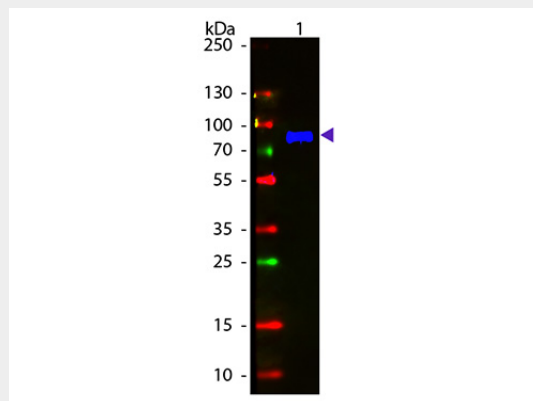
#### Anti-Monkey IgM (mu chain) (Fluorescein Conjugated) Secondary Antibody - Protein Information

#### Anti-Monkey IgM (mu chain) (Fluorescein Conjugated) Secondary Antibody - Protocols

Provided below are standard protocols that you may find useful for product applications.

- [Western Blot](#)
- [Blocking Peptides](#)
- [Dot Blot](#)
- [Immunohistochemistry](#)
- [Immunofluorescence](#)
- [Immunoprecipitation](#)
- [Flow Cytometry](#)
- [Cell Culture](#)

#### Anti-Monkey IgM (mu chain) (Fluorescein Conjugated) Secondary Antibody - Images



Western Blot of Fluorescein conjugated Goat Anti-Monkey IgM (mu chain) secondary antibody. Lane 1: Monkey IgM. Lane 2: None. Load: 50 ng per lane. Primary antibody: None. Secondary antibody: Fluorescein goat secondary antibody at 1:1,000 for 60 min at RT. Block: MB-070 for 30 min t RT. Predicted/Observed size: 72 kDa, 72 kDa for Monkey IgM. Other band(s): None.

Product	Gt-a-Monkey IgG	Gt-a-Monkey IgA	Gt-a-Monkey IgM
Rhesus Serum	+	+	+
Baboon Serum	+	+	+
Cynomolgus Serum	+	+	+
Rhesus IgG	+		
Human IgA		+	
Human IgM			+

This table displays additional reactivity among various species of serum and immunoglobulin. A (+) indicates antibody reactivity to the corresponding target.

### **Anti-Monkey IgM (mu chain) (Fluorescein Conjugated) Secondary Antibody - Background**

This product is designed for immunofluorescence microscopy, fluorescence based plate assays (FLISA) and fluorescent western blotting. This product is also suitable for multiplex analysis, including multicolor imaging, utilizing various commercial platforms.