

**Anti-Rabbit IgG (H&L) (Texas Red™ Conjugated) Secondary Antibody**  
Chicken Polyclonal, Texas Red®  
Catalog # ASR2224

**Specification**

**Anti-Rabbit IgG (H&L) (Texas Red™ Conjugated) Secondary Antibody - Product Information**

Description	<b>Anti-RABBIT IgG (H&amp;L) (CHICKEN) Antibody Texas Red™ Conjugated</b>
Host	<b>Chicken</b>
Conjugate	<b>Texas Red®</b>
FP Value	<b>2.8 moles Texas Red® per mole of IgG</b>
Target Species	<b>Rabbit</b>
Clonality	<b>Polyclonal</b>
Application	<b>,3,4,</b>
Application Note	<b>FLISA 1:10,000-1:50,000;IF Microscopy 1:1,000-1:5,000;FlowCytometry 1:500-1:2,500</b>
Physical State	<b>Lyophilized</b>
Host Isotype	<b>IgG</b>
Target Isotype	<b>IgG (H&amp;L)</b>
Buffer	<b>0.02 M Potassium Phosphate, 0.15 M Sodium Chloride, pH 7.2</b>
Immunogen	<b>Rabbit IgG whole molecule</b>
Reconstitution Volume	<b>1.0 mL</b>
Reconstitution Buffer	<b>Restore with deionized water (or equivalent)</b>
Stabilizer	<b>10 mg/mL Bovine Serum Albumin (BSA) - Immunoglobulin and Protease free</b>
Preservative	<b>0.01% (w/v) Sodium Azide</b>

**Anti-Rabbit IgG (H&L) (Texas Red™ Conjugated) Secondary Antibody - Additional Information**

**Shipping Condition**

Ambient

**Purity**

This product was prepared from monospecific antiserum by immunoaffinity chromatography using Rabbit IgG coupled to agarose beads followed by solid phase adsorption(s) to remove any unwanted reactivities. Assay by immunoelectrophoresis resulted in a single precipitin arc against anti-Chicken Serum, Rabbit IgG and Rabbit Serum.

**Storage Condition**

Store vial at 4° C prior to restoration. For extended storage aliquot contents and freeze at -20° C or below. Avoid cycles of freezing and thawing. Centrifuge product if not completely clear after standing at room temperature. This product is stable for several weeks at 4° C as an undiluted liquid. Dilute only prior to immediate use.

**Precautions Note**

This product is for research use only and is not intended for therapeutic or diagnostic applications.

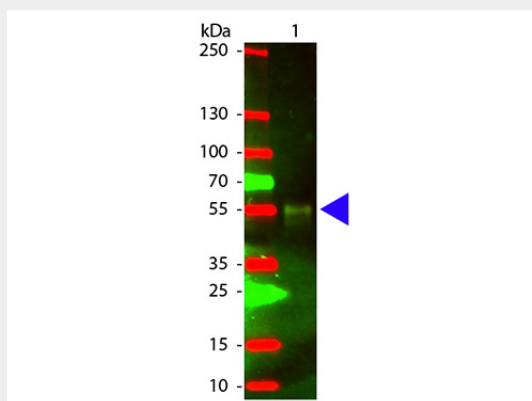
## Anti-Rabbit IgG (H&L) (Texas Red™ Conjugated) Secondary Antibody - Protein Information

## Anti-Rabbit IgG (H&L) (Texas Red™ Conjugated) Secondary Antibody - Protocols

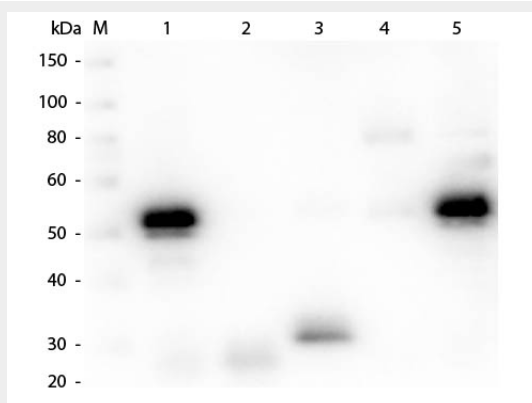
Provided below are standard protocols that you may find useful for product applications.

- [Western Blot](#)
- [Blocking Peptides](#)
- [Dot Blot](#)
- [Immunohistochemistry](#)
- [Immunofluorescence](#)
- [Immunoprecipitation](#)
- [Flow Cytometry](#)
- [Cell Culture](#)

## Anti-Rabbit IgG (H&L) (Texas Red™ Conjugated) Secondary Antibody - Images



Western Blot of Chicken anti-Rabbit IgG (H&L) Antibody Texas Red™ Conjugated antibody. Lane 1: Rabbit IgG. Lane 2: none. Load: 50 ng per lane. Secondary antibody: Texas Red™ chicken secondary antibody at 1:1,000 for 60 min at RT. Block: MB-070 for 30 min at RT. Predicted/Observed size: 55 and 28 kDa/55 kDa for Rabbit IgG. Other band(s): none.



Western Blot of Anti-Rabbit IgG (H&L) (CHICKEN) Antibody . Lane M: 3 µl Molecular Ladder. Lane

1: Rabbit IgG whole molecule . Lane 2: Rabbit IgG F(ab) Fragment . Lane 3: Rabbit IgG F(c) Fragment . Lane 4: Rabbit IgM Whole Molecule . Lane 5: Normal Rabbit Serum . All samples were reduced. Load: 50 ng per lane. Block: MB-070 for 30 min at RT. Primary Antibody: Anti-Rabbit IgG (H&L) (CHICKEN) Antibody 1:1,000 for 60 min at RT. Secondary antibody: Anti-Chicken IgG (GOAT) Peroxidase Conjugated Antibody 1:40,000 in MB-070 for 30 min at RT. Predicted/Observed Size: 25 and 50 kDa for Rabbit IgG and Serum, 25 kDa for F(c) and F(ab), 70 and 23 kDa for IgM. Rabbit F(c) migrates slightly higher.

#### **Anti-Rabbit IgG (H&L) (Texas Red™ Conjugated) Secondary Antibody - Background**

This product is designed for immunofluorescence microscopy, fluorescence based plate assays (FLISA) and fluorescent western blotting. This product is also suitable for multiplex analysis, including multicolor imaging, utilizing various commercial platforms.