

**Anti-Monkey IgG gamma Secondary Antibody**  
**Goat Polyclonal, Unconjugated**  
**Catalog # ASR1957**

**Specification**

---

**Anti-Monkey IgG gamma Secondary Antibody - Product Information**

Description	<b>Anti-MONKEY IgG (gamma chain) (GOAT) Antibody</b>
Host	<b>Goat</b>
Conjugate	<b>Unconjugated</b>
Target Species	<b>Monkey</b>
Clonality	<b>Polyclonal</b>
Application	<b>,1,10,15,</b>
Application Note	<b>ELISA 1:20,000-1:100,000;Western Blot 1:2,000-1:10,000;Immunochemistry 1:1,000-1:5,000</b>
Physical State	<b>Liquid (sterile filtered)</b>
Host Isotype	<b>IgG</b>
Target Isotype	<b>IgG (gamma chain)</b>
Buffer	<b>0.02 M Potassium Phosphate, 0.15 M Sodium Chloride, pH 7.2</b>
Immunogen	<b>Anti-Monkey IgG (gamma chain) was produced by repeated immunization with monkey IgG gamma heavy chain in goat.</b>
Preservative	<b>0.01% (w/v) Sodium Azide</b>

**Anti-Monkey IgG gamma Secondary Antibody - Additional Information**

**Shipping Condition**

Wet Ice

**Purity**

This product was prepared from monospecific antiserum by immunoaffinity chromatography using Monkey IgG coupled to agarose beads followed by solid phase adsorption(s) to remove any unwanted reactivities. Assay by immunoelectrophoresis resulted in a single precipitin arc against anti-Goat Serum, Monkey IgG and Monkey Serum. No reaction was observed against Monkey IgM or Monkey IgA.

**Storage Condition**

Store vial at 4° C prior to opening. This product is stable for several weeks at 4° C as an undiluted liquid. Dilute only prior to immediate use. For extended storage aliquot contents and freeze at -20° C or below. Avoid cycles of freezing and thawing.

**Precautions Note**

This product is for research use only and is not intended for therapeutic or diagnostic applications.

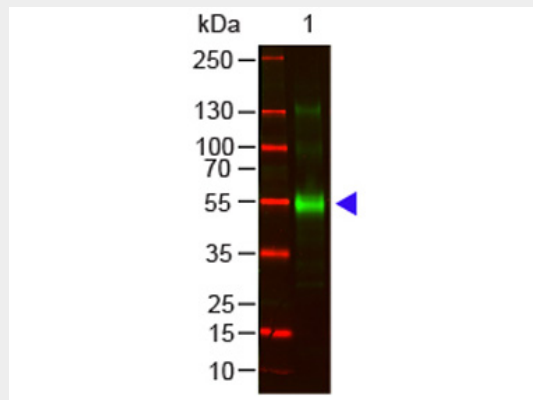
**Anti-Monkey IgG gamma Secondary Antibody - Protein Information**

## Anti-Monkey IgG gamma Secondary Antibody - Protocols

Provided below are standard protocols that you may find useful for product applications.

- [Western Blot](#)
- [Blocking Peptides](#)
- [Dot Blot](#)
- [Immunohistochemistry](#)
- [Immunofluorescence](#)
- [Immunoprecipitation](#)
- [Flow Cytometry](#)
- [Cell Culture](#)

## Anti-Monkey IgG gamma Secondary Antibody - Images



Western Blot of Goat anti-Monkey IgG gamma Antibody. Lane 1: Monkey IgG. Lane 2: None. Load: 100 ng per lane. Primary antibody: Monkey IgG gamma Antibody at 1:1000 for overnight at 4°C. Secondary antibody: DyLight™ 800 goat secondary antibody at 1:20,000 for 30 min at RT. Block: MB-070 for 30 min at RT. Predicted/Observed size: 55 kDa, 55 kDa for Monkey IgG Gamma. Other band(s): None.

Product	Gt-a-Monkey IgG	Gt-a-Monkey IgA	Gt-a-Monkey IgM
Rhesus Serum	+	+	+
Baboon Serum	+	+	+
Cynomolgus Serum	+	+	+
Rhesus IgG	+		
Human IgA		+	
Human IgM			+

This table displays additional reactivity among various species of serum and immunoglobulin. A (+) indicates antibody reactivity to the corresponding target.

## Anti-Monkey IgG gamma Secondary Antibody - Background

Anti-Monkey IgG (gamma chain) antibody generated in goat detects specifically monkey IgG (gamma chain). This secondary antibody anti-Monkey is ideal for investigators who routinely

perform ELISA, Sandwich ELISA, titration assays, western-blot, immunoprecipitation and more generally immunoassays.