

**Anti-Rat IgG (H&L) (Fluorescein Conjugated) Secondary Antibody**  
**Chicken Polyclonal, Fluorescein (FITC)**  
**Catalog # ASR1948****Specification****Anti-Rat IgG (H&L) (Fluorescein Conjugated) Secondary Antibody - Product Information**

Description	<b>Anti-RAT IgG (H&amp;L) (CHICKEN) Antibody Fluorescein Conjugated</b>
Host	<b>Chicken</b>
Conjugate	<b>Fluorescein (FITC)</b>
FP Value	<b>3.5 moles Fluorescein (FITC) per mole of IgG</b>
Target Species	<b>Rat</b>
Clonality	<b>Polyclonal</b>
Application	<b>,3,4,</b>
Application Note	<b>FLISA 1:10,000-1:50,000;IF Microscopy 1:1,000-1:5,000;FlowCytometry 1:500-1:2,500</b>
Physical State	<b>Lyophilized</b>
Host Isotype	<b>IgG</b>
Target Isotype	<b>IgG (H&amp;L)</b>
Buffer	<b>0.02 M Potassium Phosphate, 0.15 M Sodium Chloride, pH 7.2</b>
Immunogen	<b>Rat IgG whole molecule</b>
Reconstitution Volume	<b>1.0 mL</b>
Reconstitution Buffer	<b>Restore with deionized water (or equivalent)</b>
Stabilizer	<b>10 mg/mL Bovine Serum Albumin (BSA) - Immunoglobulin and Protease free</b>
Preservative	<b>0.01% (w/v) Sodium Azide</b>

**Anti-Rat IgG (H&L) (Fluorescein Conjugated) Secondary Antibody - Additional Information****Shipping Condition**

Ambient

**Purity**

This product was prepared from monospecific antiserum by immunoaffinity chromatography using Rat IgG coupled to agarose. Assay by immunoelectrophoresis resulted in a single precipitin arc against anti-Fluorescein, anti-Chicken Serum, Rat IgG and Rat Serum.

**Storage Condition**

Store vial at 4° C prior to restoration. For extended storage aliquot contents and freeze at -20° C or below. Avoid cycles of freezing and thawing. Centrifuge product if not completely clear after standing at room temperature. This product is stable for several weeks at 4° C as an undiluted liquid. Dilute only prior to immediate use.

**Precautions Note**

This product is for research use only and is not intended for therapeutic or diagnostic applications.

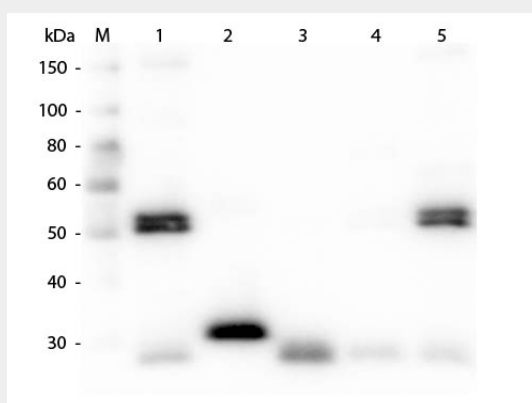
## Anti-Rat IgG (H&L) (Fluorescein Conjugated) Secondary Antibody - Protein Information

### Anti-Rat IgG (H&L) (Fluorescein Conjugated) Secondary Antibody - Protocols

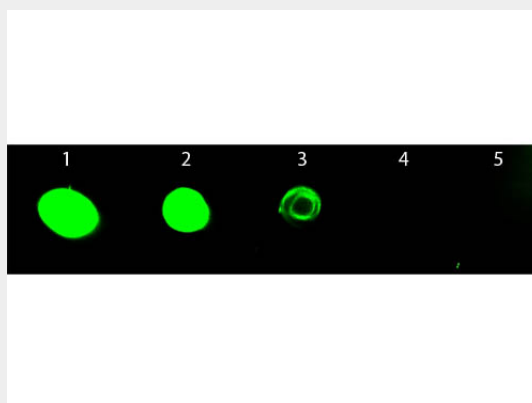
Provided below are standard protocols that you may find useful for product applications.

- [Western Blot](#)
- [Blocking Peptides](#)
- [Dot Blot](#)
- [Immunohistochemistry](#)
- [Immunofluorescence](#)
- [Immunoprecipitation](#)
- [Flow Cytometry](#)
- [Cell Culture](#)

### Anti-Rat IgG (H&L) (Fluorescein Conjugated) Secondary Antibody - Images



Western Blot of Anti-Rat IgG (H&L) (CHICKEN) Antibody . Lane M: 3  $\mu$ l Molecular Ladder. Lane 1: Rat IgG whole molecule . Lane 2: Rat IgG F(c) Fragment . Lane 3: Rat IgG F(ab) Fragment . Lane 4: Rat IgM Whole Molecule . Lane 5: Rat Serum . All samples were reduced. Load: 50 ng per lane. Block: MB-070 for 30 min at RT. Primary Antibody: Anti-Rat IgG (H&L) (CHICKEN) Antibody 1:1,000 for 60 min at RT. Secondary Antibody: Anti-Chicken IgG (GOAT) Peroxidase Conjugated Antibody 1:40,000 in MB-070 for 30 min at RT. Predicted/Observe Size: 25 and 55 kDa for Rat IgG and Serum, 25 kDa for F(c) and F(ab), 78 and 25 kDa for IgM. Rat F(c) migrates slightly higher.



Dot Blot of Chicken anti-Rat IgG Antibody Fluorescein Conjugated. Antigen: Rat IgG. Load: Lane 1

- 50 ng Lane 2 - 16.67 ng Lane 3 - 5.56 ng Lane 4 - 1.85 ng Lane 5 - 0.62 ng. Primary antibody: n/a. Secondary antibody: Chicken anti-Rat IgG Antibody Fluorescein Conjugated at 1:1,000 for 60 min at RT. Block: MB-070 for 1 HR at RT.

**Anti-Rat IgG (H&L) (Fluorescein Conjugated) Secondary Antibody - Background**

This product is designed for immunofluorescence microscopy, fluorescence based plate assays (FLISA) and fluorescent western blotting. This product is also suitable for multiplex analysis, including multicolor imaging, utilizing various commercial platforms.