

**Anti-Human IgA (alpha chain) (Fluorescein Conjugated) Secondary Antibody**  
**Rabbit Polyclonal, Fluorescein (FITC)**  
**Catalog # ASR1923****Specification****Anti-Human IgA (alpha chain) (Fluorescein Conjugated) Secondary Antibody - Product Information**

Description	<b>Anti-HUMAN IgA (alpha chain) (RABBIT) Antibody Fluorescein Conjugated</b>
Host	<b>Rabbit</b>
Conjugate	<b>Fluorescein (FITC)</b>
FP Value	<b>5.1 moles Fluorescein (FITC) per mole of IgG</b>
Target Species	<b>Human</b>
Clonality	<b>Polyclonal</b>
Application	<b>,3,4,</b>
Application Note	<b>FLISA 1:10,000-1:50,000;IF Microscopy 1:1,000-1:5,000;FlowCytometry 1:500-1:2,500</b>
Physical State	<b>Lyophilized</b>
Host Isotype	<b>IgG</b>
Target Isotype	<b>IgA</b>
Buffer	<b>0.02 M Potassium Phosphate, 0.15 M Sodium Chloride, pH 7.2</b>
Immunogen	<b>Human IgA alpha heavy chain</b>
Reconstitution Volume	<b>1.0 mL</b>
Reconstitution Buffer	<b>Restore with deionized water (or equivalent)</b>
Stabilizer	<b>10 mg/mL Bovine Serum Albumin (BSA) - Immunoglobulin and Protease free</b>
Preservative	<b>0.01% (w/v) Sodium Azide</b>

**Anti-Human IgA (alpha chain) (Fluorescein Conjugated) Secondary Antibody - Additional Information****Shipping Condition**

Ambient

**Purity**

This product was prepared from monospecific antiserum by immunoaffinity chromatography using Human IgA coupled to agarose beads followed by solid phase adsorption(s) to remove any unwanted reactivities. Assay by immunoelectrophoresis resulted in a single precipitin arc against anti-Fluorescein, anti-Rabbit Serum, Human IgA and Human Serum. No reaction was observed against Human IgG or Human IgM. Specificity was confirmed by ELISA minimal cross reactivity against other Human heavy or light chain isotypes.

**Storage Condition**

Store vial at 4° C prior to restoration. For extended storage aliquot contents and freeze at -20° C or below. Avoid cycles of freezing and thawing. Centrifuge product if not completely clear after standing at room temperature. This product is stable for several weeks at 4° C as an undiluted

liquid. Dilute only prior to immediate use.

#### Precautions Note

This product is for research use only and is not intended for therapeutic or diagnostic applications.

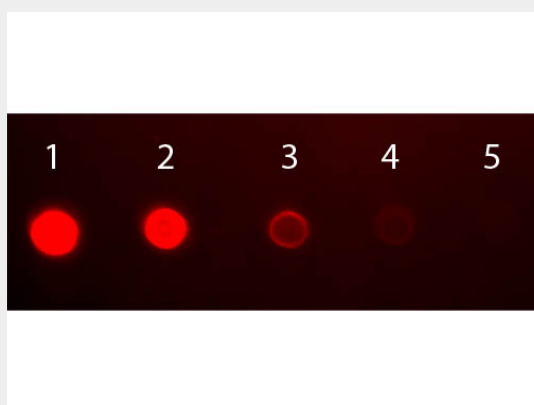
### Anti-Human IgA (alpha chain) (Fluorescein Conjugated) Secondary Antibody - Protein Information

### Anti-Human IgA (alpha chain) (Fluorescein Conjugated) Secondary Antibody - Protocols

Provided below are standard protocols that you may find useful for product applications.

- [Western Blot](#)
- [Blocking Peptides](#)
- [Dot Blot](#)
- [Immunohistochemistry](#)
- [Immunofluorescence](#)
- [Immunoprecipitation](#)
- [Flow Cytometry](#)
- [Cell Culture](#)

### Anti-Human IgA (alpha chain) (Fluorescein Conjugated) Secondary Antibody - Images



Dot Blot of Human IgA (alpha chain) Antibody Fluorescein Conjugated. Antigen: Human IgA. Load: Lane 1 - 50 ng Lane 2 - 16.67 ng Lane 3 - 5.56 ng Lane 4 - 1.85 ng Lane 5 - 0.62 ng. Primary antibody: none. Secondary antibody: Human IgA (alpha chain) Antibody Fluorescein Conjugated at 1:1,000 for 60 min at RT. Block: MB-070 for 60 min at RT.

### Anti-Human IgA (alpha chain) (Fluorescein Conjugated) Secondary Antibody - Background

This product is designed for immunofluorescence microscopy, fluorescence based plate assays (FLISA) and fluorescent western blotting. This product is also suitable for multiplex analysis, including multicolor imaging, utilizing various commercial platforms.