

F(ab')₂ Anti-Human IgG F(c) Pre-Adsorbed Secondary Antibody
Goat Polyclonal, Unconjugated
Catalog # ASR1855**Specification****F(ab')₂ Anti-Human IgG F(c) Pre-Adsorbed Secondary Antibody - Product Information**

Description	F(ab')₂ Anti-HUMAN IgG F(c) (GOAT) Antibody Min X Bv Hs Ms & Rt Serum Proteins
Host	Goat
Conjugate	Unconjugated
Target Species	Human
Clonality	Polyclonal
Application	,1,10,15,
Application Note	ELISA 1:1,500-1:7,000;Western Blot 1:500-1:5,000;Immunochemistry 1:1,000-1:5,000
Physical State	Liquid (sterile filtered)
Host Isotype	IgG F(ab')₂
Target Isotype	IgG F(c)
Buffer	0.02 M Potassium Phosphate, 0.15 M Sodium Chloride, pH 7.2
Immunogen	Human IgG F(c) fragment
Stabilizer	None
Preservative	0.01% (w/v) Sodium Azide

F(ab')₂ Anti-Human IgG F(c) Pre-Adsorbed Secondary Antibody - Additional Information**Shipping Condition**

Wet Ice

Purity

This product was prepared from monospecific antiserum by immunoaffinity chromatography using Human IgG coupled to agarose beads followed by solid phase adsorption(s) to remove any unwanted reactivities, pepsin digestion and chromatographic separation. Assay by immunoelectrophoresis resulted in a single precipitin arc against anti-Goat Serum, Human IgG, Human IgG F(c) and Human Serum. No reaction was observed against anti-Pepsin, anti-Goat IgG F(c), Human IgG F(ab')₂ or Bovine, Horse, Mouse and Rat Serum Proteins.

Storage Condition

Store vial at 4° C prior to opening. This product is stable for several weeks at 4° C as an undiluted liquid. Dilute only prior to immediate use. For extended storage aliquot contents and freeze at -20° C or below. Avoid cycles of freezing and thawing.

Precautions Note

This product is for research use only and is not intended for therapeutic or diagnostic applications.

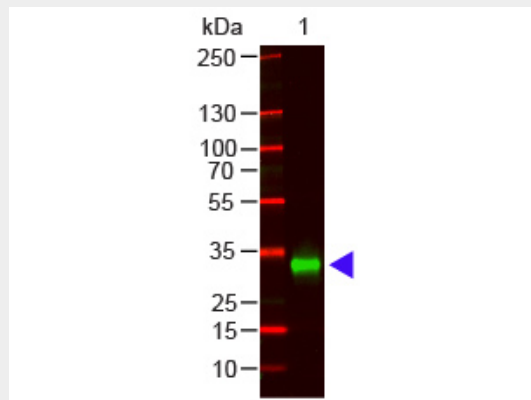
F(ab')₂ Anti-Human IgG F(c) Pre-Adsorbed Secondary Antibody - Protein Information

F(ab')₂ Anti-Human IgG F(c) Pre-Adsorbed Secondary Antibody - Protocols

Provided below are standard protocols that you may find useful for product applications.

- [Western Blot](#)
- [Blocking Peptides](#)
- [Dot Blot](#)
- [Immunohistochemistry](#)
- [Immunofluorescence](#)
- [Immunoprecipitation](#)
- [Flow Cytometry](#)
- [Cell Culture](#)

F(ab')₂ Anti-Human IgG F(c) Pre-Adsorbed Secondary Antibody - Images



Western Blot of Goat anti-F(ab')₂ Human IgG F(c) Antibody (Pre-Adsorbed) Lane 1: Human IgG F(c) Load: 100 ng per lane Primary antibody: F(ab')₂ Human IgG F(c) Antibody (Pre-Adsorbed) at 1:1000 o/n at 4°C Secondary antibody: DyLight™ 800 Donkey anti-goat at 1:20,000 for 30 min at RT Block: MB-070 for 30 min at RT Predicted/Observed size: 28 kDa, 28 kDa

F(ab')₂ Anti-Human IgG F(c) Pre-Adsorbed Secondary Antibody - Background

F(ab')₂ Antibody was generated by enzymatic cleavage and subsequent separation from the Fc fragment. Because of their smaller size, F(ab')₂ fragments offer several advantages over intact antibodies for use in certain immunochemical techniques and experimental applications. F(ab')₂ fragments penetrate into tissue samples and show better antigen recognition and signal generation in IHC. F(ab')₂ fragments lack the Fc region and therefore do not bind Fc receptors which effectively lowers background staining. F(ab')₂ Antibody is ideal for investigators who routinely perform flow cytometry, immunohistochemistry or IHC and other immunoassays.