

**Anti-Rat IgG F(c) (Rhodamine Conjugated) Secondary Antibody  
Goat Polyclonal, Rhodamine (TRITC)  
Catalog # ASR1824****Specification****Anti-Rat IgG F(c) (Rhodamine Conjugated) Secondary Antibody - Product Information**

Description	<b>Anti-RAT IgG F(c) (GOAT) Antibody Rhodamine Conjugated</b>
Host	<b>Goat</b>
Conjugate	<b>Rhodamine (TRITC)</b>
FP Value	<b>3.5 moles Rhodamine (TRITC) per mole of IgG</b>
Target Species	<b>Rat</b>
Clonality	<b>Polyclonal</b>
Application	<b>,3,4, FLISA 1:10,000-1:50,000;IF Microscopy</b>
Application Note	<b>1:1,000-1:5,000;FlowCytometry 1:500-1:2,500</b>
Physical State	<b>Lyophilized</b>
Host Isotype	<b>IgG</b>
Target Isotype	<b>IgG F(c)</b>
Buffer	<b>0.02 M Potassium Phosphate, 0.15 M Sodium Chloride, pH 7.2</b>
Immunogen	<b>Rat IgG F(c) fragment</b>
Reconstitution Volume	<b>1.0 mL</b>
Reconstitution Buffer	<b>Restore with deionized water (or equivalent)</b>
Stabilizer	<b>10 mg/mL Bovine Serum Albumin (BSA) - Immunoglobulin and Protease free</b>
Preservative	<b>0.01% (w/v) Sodium Azide</b>

**Anti-Rat IgG F(c) (Rhodamine Conjugated) Secondary Antibody - Additional Information****Shipping Condition**

Ambient

**Purity**

This product was prepared from monospecific antiserum by immunoaffinity chromatography using Rat IgG coupled to agarose beads followed by solid phase adsorption(s) to remove any unwanted reactivities. Assay by immunoelectrophoresis resulted in a single precipitin arc against anti-Goat Serum, Rat IgG, Rat IgG F(c) and Rat Serum. No reaction was observed against Rat IgG F(ab')<sub>2</sub>.

**Storage Condition**

Store vial at 4° C prior to restoration. For extended storage aliquot contents and freeze at -20° C or below. Avoid cycles of freezing and thawing. Centrifuge product if not completely clear after standing at room temperature. This product is stable for several weeks at 4° C as an undiluted liquid. Dilute only prior to immediate use.

**Precautions Note**

This product is for research use only and is not intended for therapeutic or diagnostic applications.

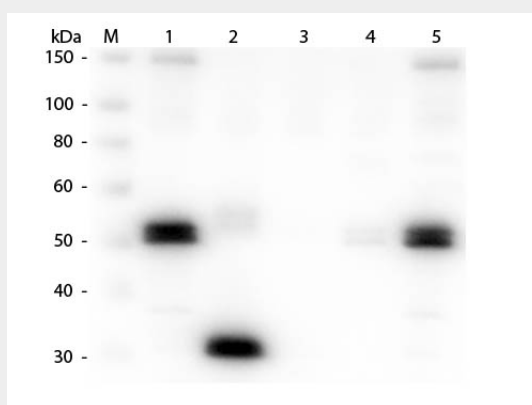
## Anti-Rat IgG F(c) (Rhodamine Conjugated) Secondary Antibody - Protein Information

### Anti-Rat IgG F(c) (Rhodamine Conjugated) Secondary Antibody - Protocols

Provided below are standard protocols that you may find useful for product applications.

- [Western Blot](#)
- [Blocking Peptides](#)
- [Dot Blot](#)
- [Immunohistochemistry](#)
- [Immunofluorescence](#)
- [Immunoprecipitation](#)
- [Flow Cytometry](#)
- [Cell Culture](#)

### Anti-Rat IgG F(c) (Rhodamine Conjugated) Secondary Antibody - Images



Western Blot of Anti-Rat IgG F(c) (GOAT) Antibody . Lane M: 3  $\mu$ l Molecular Ladder. Lane 1: Rat IgG whole molecule . Lane 2: Rat IgG F(c) Fragment . Lane 3: Rat IgG F(ab) Fragment . Lane 4: Rat IgM Whole Molecule . Lane 5: Rat Serum . All samples were reduced. Load: 50 ng per lane. Block: MB-070 for 30 min at RT. Primary Antibody: Anti-Rat IgG F(c) (GOAT) Antibody 1:1,000 for 60 min at RT. Secondary Antibody: Anti-Goat IgG (DONKEY) Peroxidase Conjugated Antibody 1:40,000 in MB-070 for 30 min at RT. Predicted/Observed Size: 25 and 55 kDa for Rat IgG and Serum, 25 kDa for F(c) and F(ab), 78 and 25 kDa for IgM. Rat F(c) migrates slightly higher.

### Anti-Rat IgG F(c) (Rhodamine Conjugated) Secondary Antibody - Background

This product is designed for immunofluorescence microscopy, fluorescence based plate assays (FLISA) and fluorescent western blotting. This product is also suitable for multiplex analysis, including multicolor imaging, utilizing various commercial platforms.