

Anti-Rabbit IgG F(c) Pre-Adsorbed Secondary Antibody
Goat Polyclonal, Unconjugated
Catalog # ASR1814**Specification****Anti-Rabbit IgG F(c) Pre-Adsorbed Secondary Antibody - Product Information**

Description	Anti-RABBIT IgG F(c) (GOAT) Antibody (Min X Human Serum Proteins)
Host	Goat
Conjugate	Unconjugated
Target Species	Rabbit
Reactivity	Rabbit
Clonality	Polyclonal
Application	,1,10,15,
Application Note	ELISA 1:20,000-1:100,000;Western Blot 1:2,000-1:10,000;Immunochemistry 1:1,000-1:5,000
Physical State	Liquid (sterile filtered)
Host Isotype	IgG
Target Isotype	IgG F(c)
Buffer	0.02 M Potassium Phosphate, 0.15 M Sodium Chloride, pH 7.2
Immunogen	Anti Rabbit IgG F(c) was produced by repeated immunization with rabbit IgG F(c) fragment in goat.
Stabilizer	None
Preservative	0.01% (w/v) Sodium Azide

Anti-Rabbit IgG F(c) Pre-Adsorbed Secondary Antibody - Additional Information**Shipping Condition**

Wet Ice

Purity

This product was prepared from monospecific antiserum by immunoaffinity chromatography using Rabbit IgG coupled to agarose beads followed by solid phase adsorption(s) to remove any unwanted reactivities. Assay by immunoelectrophoresis resulted in a single precipitin arc against anti-Goat Serum, Rabbit IgG, Rabbit IgG F(c) and Rabbit Serum. No reaction was observed against Rabbit IgG F(ab')₂ or Human Serum Proteins.

Storage Condition

Store vial at 4° C prior to opening. This product is stable for several weeks at 4° C as an undiluted liquid. Dilute only prior to immediate use. For extended storage aliquot contents and freeze at -20° C or below. Avoid cycles of freezing and thawing.

Precautions Note

This product is for research use only and is not intended for therapeutic or diagnostic applications.

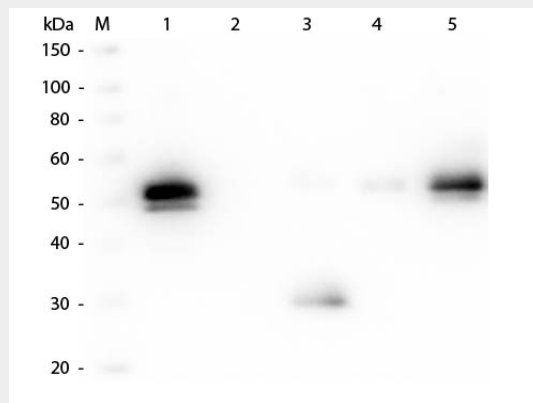
Anti-Rabbit IgG F(c) Pre-Adsorbed Secondary Antibody - Protein Information

Anti-Rabbit IgG F(c) Pre-Adsorbed Secondary Antibody - Protocols

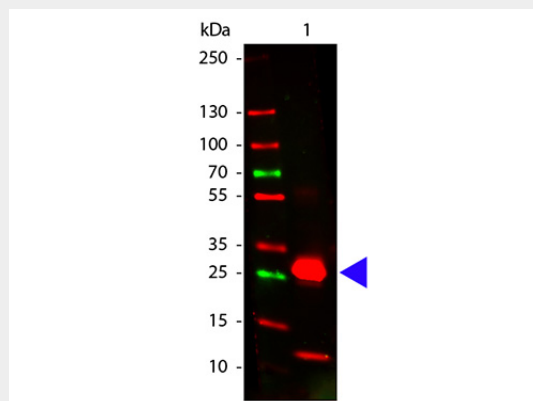
Provided below are standard protocols that you may find useful for product applications.

- [Western Blot](#)
- [Blocking Peptides](#)
- [Dot Blot](#)
- [Immunohistochemistry](#)
- [Immunofluorescence](#)
- [Immunoprecipitation](#)
- [Flow Cytometry](#)
- [Cell Culture](#)

Anti-Rabbit IgG F(c) Pre-Adsorbed Secondary Antibody - Images



Western Blot of Anti-Rabbit IgG F(c) (GOAT) Antibody . Lane M: 3 μ l Molecular Ladder. Lane 1: Rabbit IgG whole molecule . Lane 2: Rabbit IgG F(ab) Fragment . Lane 3: Rabbit IgG F(c) Fragment . Lane 4: Rabbit IgM Whole Molecule . Lane 5: Normal Rabbit Serum . All samples were reduced. Load: 50 ng of IgG, F(ab), IgM and Serum, 100 ng of F(c). Block: MB-070 for 30 min at RT. Primary Antibody: Anti-Rabbit IgG F(c) (GOAT) Antibody 1:2,000 for 60 min at RT. Secondary antibody: Anti-Goat IgG (DONKEY) Peroxidase Conjugated Antibody 1:40,000 in MB-070 for 30 min at RT. Predicted/Observed Size: 25 and 50 kDa for Rabbit IgG and Serum, 25 kDa for F(c) and F(ab), 70 and 23 kDa for IgM. Rabbit F(c) migrates slightly higher.



Western Blot of Goat anti-Rabbit Fc antibody. Lane 1: Rabbit Fc. Lane 2: None. Load: 100 ng per lane. Primary antibody: Rabbit Fc antibody at 1:1,000 for overnight at 4°C. Secondary antibody: DyLight™ 649 goat secondary antibody at 1:20,000 for 30 min at RT. Block: MB-070 for 30 min at

RT. Predicted/Observed size: 28 kDa, 28 kDa for Rabbit Fc. Other band(s): Rabbit Fc splice variants and isoforms.

Anti-Rabbit IgG F(c) Pre-Adsorbed Secondary Antibody - Background

Anti-Rabbit IgG F(c) antibody generated in goat detects specifically rabbit IgG F(c). This secondary antibody anti-Rabbit is ideal for investigators who routinely perform ELISA, Sandwich ELISA, titration assays, western-blot, immunoprecipitation and more generally immunoassays.