

Anti-Human IgA (alpha chain) Secondary Antibody
Rabbit Polyclonal, Unconjugated
Catalog # ASR1789**Specification****Anti-Human IgA (alpha chain) Secondary Antibody - Product Information**

Description	Anti-HUMAN IgA (alpha chain) (RABBIT) Antibody
Host	Rabbit
Conjugate	Unconjugated
Target Species	Human
Clonality	Polyclonal
Application	,1,10,15,
Application Note	ELISA 1:5,000-1:20,000;Western Blot 1:500-1:2,000;Immunochemistry 1:250-1:1,000
Physical State	Liquid (sterile filtered)
Host Isotype	IgG
Target Isotype	IgA
Buffer	0.02 M Potassium Phosphate, 0.15 M Sodium Chloride, pH 7.2
Immunogen	Human IgA alpha heavy chain
Stabilizer	None
Preservative	0.01% (w/v) Sodium Azide

Anti-Human IgA (alpha chain) Secondary Antibody - Additional Information**Shipping Condition**

Wet Ice

Purity

This product was prepared from monospecific antiserum by immunoaffinity chromatography using Human IgA coupled to agarose followed by solid phase adsorption(s). Assay by immunoelectrophoresis resulted in a single precipitin arc against anti-Rabbit Serum, Human IgA and Human Serum. No reaction was observed against other human heavy or light chain proteins.

Storage Condition

Store vial at 4° C prior to opening. This product is stable for several weeks at 4° C as an undiluted liquid. Dilute only prior to immediate use. For extended storage aliquot contents and freeze at -20° C or below. Avoid cycles of freezing and thawing.

Precautions Note

This product is for research use only and is not intended for therapeutic or diagnostic applications.

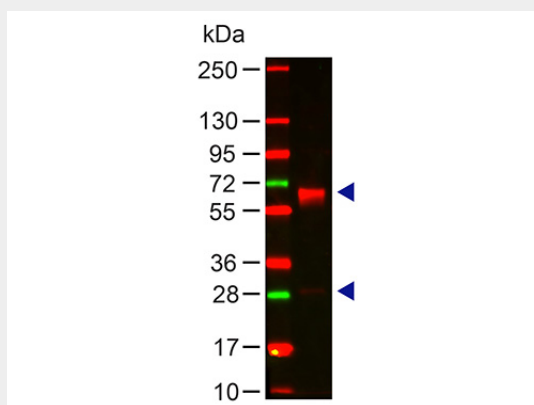
Anti-Human IgA (alpha chain) Secondary Antibody - Protein Information

Anti-Human IgA (alpha chain) Secondary Antibody - Protocols

Provided below are standard protocols that you may find useful for product applications.

- [Western Blot](#)
- [Blocking Peptides](#)
- [Dot Blot](#)
- [Immunohistochemistry](#)
- [Immunofluorescence](#)
- [Immunoprecipitation](#)
- [Flow Cytometry](#)
- [Cell Culture](#)

Anti-Human IgA (alpha chain) Secondary Antibody - Images



Western Blot of Rabbit Anti-HUMAN IgA (alpha chain) Antibody Lane 1: Human IgA Load: 100 ng per lane Primary antibody: HUMAN IgA (alpha chain) Antibody at 1:1000 for 60 min at RT Secondary antibody: DyLight 649 goat anti-rabbit at 1:20,000 for 30 min at RT Block: 5% BLOTTO 30 min at RT Predicted/Observed size: 60 and 28 kDa, 60 and 28 kDa