

Human Albumin Rhodamine
Catalog # ASR1065**Specification**

Human Albumin Rhodamine - Product Information

Description	HUMAN ALBUMIN Rhodamine conjugated
Conjugate	Rhodamine (TRITC)
FP Value	2.9 moles Rhodamine (TRITC) per mole of Human Albumin
Physical State	Lyophilized
Host Isotype	Albumin
Buffer	0.02 M Potassium Phosphate, 0.15 M Sodium Chloride, pH 7.2
Species of Origin	Human
Reconstitution Volume	1.0 mL
Reconstitution Buffer	Restore with deionized water (or equivalent)
Stabilizer	10 mg/ml Polyethylene Glycol (PEG-8000)
Preservative	0.01% (w/v) Sodium Azide

Human Albumin Rhodamine - Additional Information**Shipping Condition**

Ambient

Purity

Human Albumin Rhodamine was prepared from chromatographically pure Human Albumin. Assay by immunoelectrophoresis resulted in a single precipitin arc against anti-Human Albumin.

Storage Condition

Store vial at 4° C prior to restoration. For extended storage aliquot contents and freeze at -20° C or below. Avoid cycles of freezing and thawing. Centrifuge product if not completely clear after standing at room temperature. This product is stable for several weeks at 4° C as an undiluted liquid. Dilute only prior to immediate use.

Precautions Note

This product is for research use only and is not intended for therapeutic or diagnostic applications.

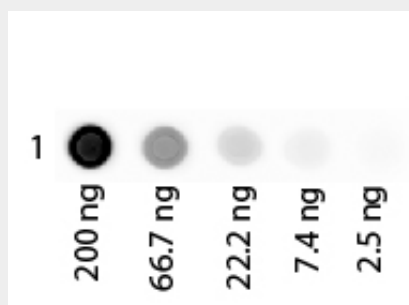
Human Albumin Rhodamine - Protein Information**Human Albumin Rhodamine - Protocols**

Provided below are standard protocols that you may find useful for product applications.

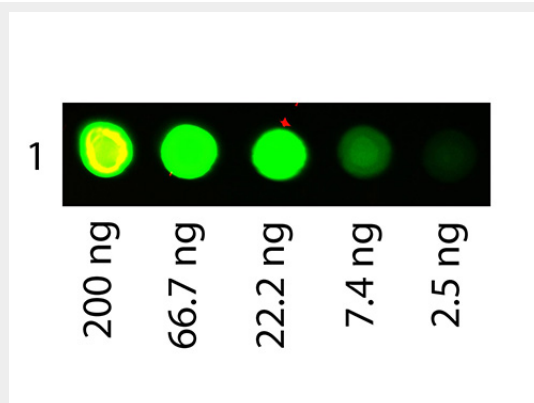
- [Western Blot](#)
- [Blocking Peptides](#)

- [Dot Blot](#)
- [Immunohistochemistry](#)
- [Immunofluorescence](#)
- [Immunoprecipitation](#)
- [Flow Cytometry](#)
- [Cell Culture](#)

Human Albumin Rhodamine - Images



Dot Blot of Human Albumin Rhodamine Conjugated. Antigen: Rhodamine Conjugated Human Albumin. Load: 3-fold serial dilution starting at 200 ng. Primary antibody: None. Secondary antibody: None. Block: MB-070 for 1 H at RT.



Dot Blot of Human Albumin Rhodamine Conjugated. Antigen: Rhodamine Conjugated Human Albumin. Load: 3-fold serial dilution starting at 200 ng. Primary antibody: None. Secondary antibody: None. Block: MB-070 for 1 H at RT.

Human Albumin Rhodamine - Background

Human Albumin Rhodamine is designed for immunofluorescence microscopy, fluorescence based plate assays (FLISA) and fluorescent western blotting. This product is also suitable for multiplex analysis, including multicolor imaging, utilizing various commercial platforms.