

**RAB1A Antibody**  
**RAB1A, Clone 4G10**  
**Catalog # ASM10702**

**Specification**

---

**RAB1A Antibody - Product Information**

Application	<b>WB, IP</b>
Primary Accession	<a href="#">P62820</a>
Other Accession	<a href="#">NP_004152.1</a>
Host	<b>Mouse</b>
Clonality	<b>Monoclonal</b>
<b>Target/Specificity</b>	
RAB1A	

**Other Names**

GTP binding protein RAB 1A antibody, antibody, RAB 1 antibody, Rab 1A antibody, Rab1A antibody, RAB1A member RAS oncogene family antibody, RAB1A\_HUMAN antibody, Ras related protein Rab 1A antibody, Ras-related protein Rab-1A antibody, YPT1-related protein antibody, RAB1 Antibody

**Immunogen**

Full length recombinant Human RAB1A protein

**Purification**

Protein G Purified

Storage **-20°C**

**Storage Buffer**

PBS pH 7.4, 50% glycerol, 0.09% Sodium azide \*Storage buffer may change when conjugated

Shipping Temperature **Blue Ice or 4°C**

**Certificate of Analysis**

A 1:1000 dilution of SMC-613 was sufficient for detection of RAB1A in 10 ug (A549, MEF); 20 ug (Mouse Brain) lysates by ECL immunoblot analysis.

**Cellular Localization**

Cytoplasm | Endoplasmic reticulum | Endosome | Golgi apparatus | Membrane

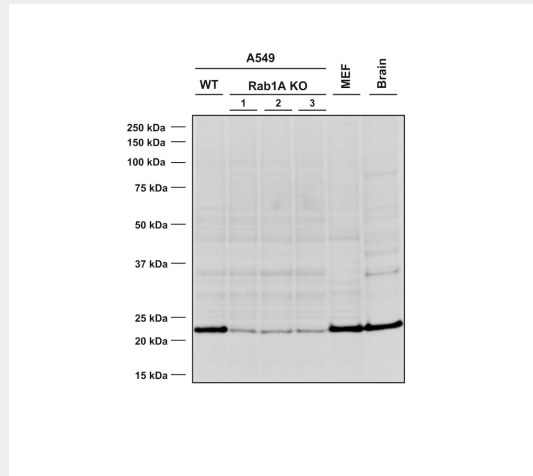
**RAB1A Antibody - Protocols**

Provided below are standard protocols that you may find useful for product applications.

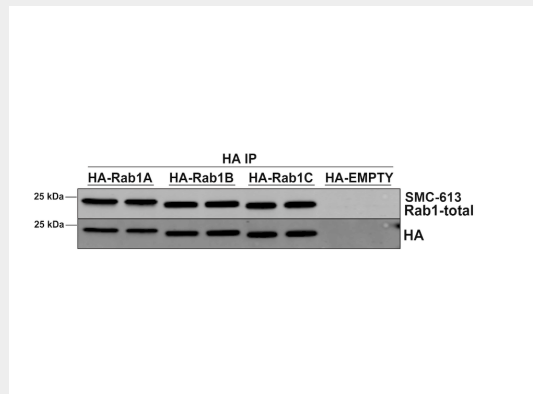
- [Western Blot](#)
- [Blocking Peptides](#)
- [Dot Blot](#)
- [Immunohistochemistry](#)
- [Immunofluorescence](#)
- [Immunoprecipitation](#)
- [Flow Cytometry](#)

• [Cell Culture](#)

**RAB1A Antibody - Images**



Western Blot analysis of Human, Mouse A549 WT and KO cells, MEF, mouse brain cells showing detection of RAB1A protein using Mouse Anti-RAB1A Monoclonal Antibody, Clone 4G10 (ASM10702). Lane 1: MW ladder. Lane 2: WT A549 cells. Lane 3-5: KO A549 clones. Lane 6: MEF cells. Lane 7: mouse brain cells.. Load: 10 ug (A549, MEF); 20 ug (Mouse Brain). Primary Antibody: Mouse Anti-RAB1A Monoclonal Antibody (ASM10702) at 1:1000.



Immunoprecipitation analysis using Mouse Anti-RAB1A Monoclonal Antibody, Clone 4G10 (ASM10702). Tissue: HEK293 cells overexpressing RAB1A, RAB1B, and RAB1C. Species: Human. Primary Antibody: Mouse Anti-RAB1A Monoclonal Antibody (ASM10702).

**RAB1A Antibody - Background**

Rab1A is mostly found in the membrane of the endoplasmic reticulum (ER) and Golgi apparatus and is involved in cell signaling, cancer, and neurodegenerative diseases (1). It regulates protein transport from the ER to the Golgi compartment and is involved in growth hormone secretion (2).

**RAB1A Antibody - References**

1. Yang, X. et al. (2016) Oncogene. 35(44):5699-5704
2. pubchem.ncbi.nlm.nih.gov/protein/P62820