

**Metallothionein Antibody**  
**Metallothionein Antibody, Clone 1F5**  
**Catalog # ASM10676****Specification**

---

**Metallothionein Antibody - Product Information**

Application	<b>WB</b>
Primary Accession	<a href="#">O911X5</a>
Other Accession	<a href="#">NP_250830.1</a>
Host	<b>Mouse</b>
Reactivity	<b>Bovine</b>
Clonality	<b>Monoclonal</b>
<b>Target/Specificity</b>	
Metallothionein	

**Other Names**

Metallothionein Antibody, CES 1 antibody, CES1 antibody, Metallothionein 1A antibody, Metallothionein 1S antibody, Metallothionein 2 antibody, Metallothionein 2A antibody, Metallothionein IA antibody, Metallothionein II antibody, Metallothionein-1A antibody, Metallothionein-IA antibody, Metallothionein2 antibody, MGC32848 antibody, MT 1A antibody, MT 2 antibody, MT 2A antibody, MT IA antibody, MT II antibody, MT-1A antibody, MT-IA antibody, MT1 antibody, MT1A antibody, MT1A\_HUMAN antibody, MT1S antibody, MT2 antibody, MT2A antibody, MTC antibody, Probable Metallothionein Antibody, pmtA Antibody

**Immunogen**

Recombinant full length Pseudomonas aeruginosa Metallothionein protein

**Purification**

Protein G Purified

Storage **-20°C**

**Storage Buffer**

PBS pH 7.4, 50% glycerol, 0.09% Sodium azide \*Storage buffer may change when conjugated

Shipping Temperature

**Blue Ice or 4°C**

**Certificate of Analysis**

A 1:1000 dilution of SMC-551 was sufficient for detection of Metallothionein in 1 µg of purified Pseudomonas aeruginosa Metallothionein (PmtA)-GST tagged protein by ECL immunoblot analysis using goat anti-mouse IgG:HRP as the secondary antibody.

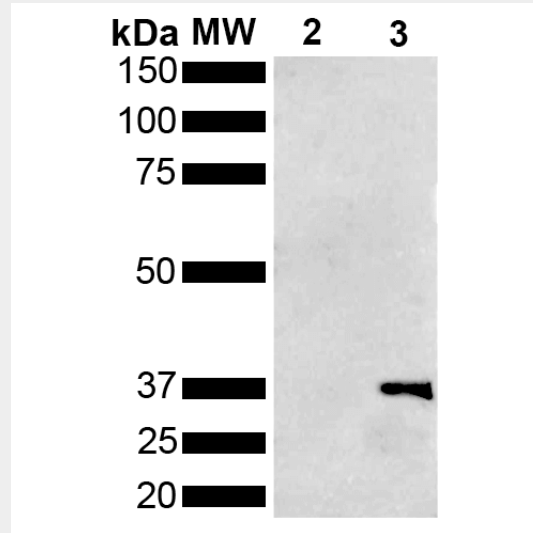
**Metallothionein Antibody - Protocols**

Provided below are standard protocols that you may find useful for product applications.

- [Western Blot](#)
- [Blocking Peptides](#)
- [Dot Blot](#)
- [Immunohistochemistry](#)
- [Immunofluorescence](#)

- [Immunoprecipitation](#)
- [Flow Cytometry](#)
- [Cell Culture](#)

### Metallothionein Antibody - Images



Western Blot analysis of *Pseudomonas aeruginosa* Metallothionein (PmtA) GST tagged showing detection of 36 kDa Metallothionein protein using Mouse Anti-Metallothionein Monoclonal Antibody, Clone 1F5 (ASM10676). Lane 1: Molecular Weight Ladder (MW). Lane 2: GST. Lane 3: Purified *Pseudomonas aeruginosa* Metallothionein (PmtA) GST tagged. Load: 1  $\mu$ g. Block: 5% Skim Milk powder in TBST. Primary Antibody: Mouse Anti-Metallothionein Monoclonal Antibody (ASM10676) at 1:1000 for 2 hours at RT. Secondary Antibody: Goat Anti-Mouse IgG:HRP at 1:5000 for 1 hour at RT. Color Development: ECL solution for 5 min in RT. Predicted/Observed Size: 36 kDa.