

NRAS Antibody
Rabbit Anti-Human NRAS Polyclonal
Catalog # ASM10645

Specification

NRAS Antibody - Product Information

Application	WB
Primary Accession	P01111
Other Accession	NP_002515.1
Host	Rabbit
Reactivity	Rat
Clonality	Polyclonal
Target/Specificity	
NRAS	

Other Names

Transforming protein N-Ras Antibody, GTPase NRas Antibody, NRAS Antibody, HRAS1 Antibody

Immunogen

Synthetic peptide from the C-terminal of Human GTPase NRas (aa. 85-185)

Purification

Peptide Affinity Purified

Storage **-20°C**

Storage Buffer

PBS pH 7.4, 50% glycerol, 0.09% sodium azide *Storage buffer may change when conjugated

Shipping Temperature

Blue Ice or 4°C

Certificate of Analysis

A 1:1000 dilution of SPC-796 was sufficient for detection of NRAS in 15 µg of rat Kidney cell lysates by ECL immunoblot analysis using goat anti-rabbit IgG:HRP as the secondary antibody.

Cellular Localization

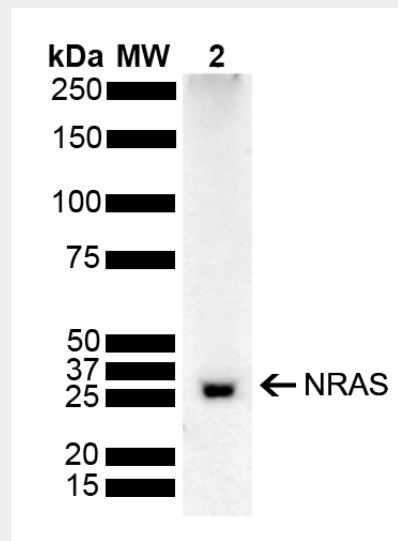
Cell Membrane | Lipid-Anchor | Cytoplasmic Side | Golgi Apparatus Membrane | Lipid-Anchor

NRAS Antibody - Protocols

Provided below are standard protocols that you may find useful for product applications.

- [Western Blot](#)
- [Blocking Peptides](#)
- [Dot Blot](#)
- [Immunohistochemistry](#)
- [Immunofluorescence](#)
- [Immunoprecipitation](#)
- [Flow Cytometry](#)
- [Cell Culture](#)

NRAS Antibody - Images



Western blot analysis of Rat Kidney showing detection of 21.2 kDa NRAS protein using Rabbit Anti-NRAS Polyclonal Antibody (SPC-796). Load: 15 μ g. Block: 5% Skim Milk powder in TBST. Primary Antibody: Rabbit Anti-NRAS Polyclonal Antibody (SPC-796) at 1:1000 for 2 hours at RT with shaking. Secondary Antibody: Goat Anti-Rabbit IgG: HRP at 1:5000 for 1 hour at RT. Color Development: ECL solution for 5 min at RT. Predicted/Observed Size: 21.2 kDa. Other Band(s): 25 kDa.