

**PDGFB Antibody**  
**Rabbit Anti-Human PDGFB Polyclonal**  
**Catalog # ASM10641**

**Specification**

---

**PDGFB Antibody - Product Information**

Application	IHC
Primary Accession	<a href="#">P01127</a>
Other Accession	<a href="#">NP_002599.1</a>
Host	Rabbit
Clonality	Polyclonal
Format	PDGFB
<b>Target/Specificity</b>	
PDGFB	

**Other Names**

SSV Antibody, PDGF subunit B Antibody, SIS Antibody, Proto-oncogene c-Sis Antibody, Platelet-derived growth factor subunit B Antibody, PDGF-2 Antibody, PDGF 2 Antibody, PDGF B chain Antibody, Pdgfb Antibody, Platelet derived growth factor 2 Antibody, Platelet-derived growth factor beta polypeptide Antibody, INN: Becaplermin Antibody, Becaplermin Antibody, PDGFB\_HUMAN Antibody, PDGF2 Antibody, Platelet-derived growth factor B chain Antibody, PDGFB Antibody

**Immunogen**

Synthetic peptide from the mid-protein of Human Platelet-derived growth factor subunit B (aa. 101-201)

**Purification**

Peptide Affinity Purified

Storage **-20°C**

**Storage Buffer**

PBS pH 7.4, 50% glycerol, 0.09% sodium azide \*Storage buffer may change when conjugated

Shipping Temperature **Blue Ice or 4°C**

**Certificate of Analysis**

A 1:1000 dilution of SPC-792 was sufficient for detection of PDGFB in 15 µg of mouse Brain cell lysates by ECL immunoblot analysis using goat anti-rabbit IgG:HRP as the secondary antibody.

**Cellular Localization**

Secreted

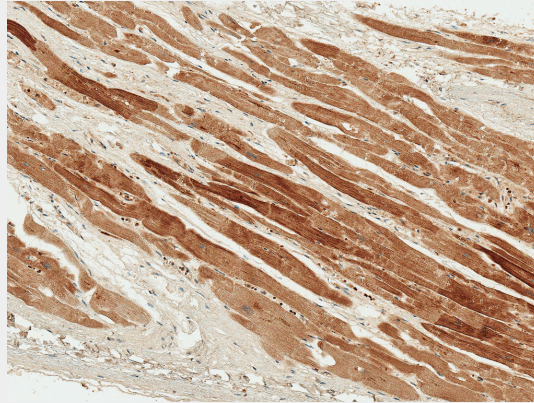
**PDGFB Antibody - Protocols**

Provided below are standard protocols that you may find useful for product applications.

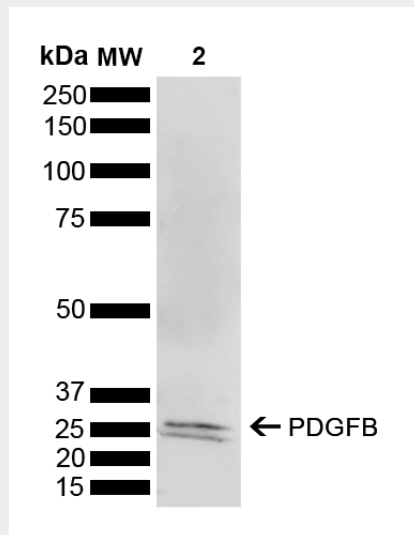
- [Western Blot](#)
- [Blocking Peptides](#)
- [Dot Blot](#)

- [Immunohistochemistry](#)
- [Immunofluorescence](#)
- [Immunoprecipitation](#)
- [Flow Cytometry](#)
- [Cell Culture](#)

**PDGFB Antibody - Images**



Immunohistochemistry analysis using Rabbit Anti-PDGFB Polyclonal Antibody (SPC-792). Tissue: Heart. Species: Human. Fixation: Formalin Fixed Paraffin-Embedded. Primary Antibody: Rabbit Anti-PDGFB Polyclonal Antibody (SPC-792) at 1:50 for 30 min at RT. Counterstain: Hematoxylin. Magnification: 10X. HRP-DAB Detection. | Western blot analysis of Mouse Brain showing detection of 27.3 kDa PDGFB protein using Rabbit Anti-PDGFB Polyclonal Antibody (SPC-792). Load: 15 µg. Block: 5% Skim Milk powder in TBST. Primary Antibody: Rabbit Anti-PDGFB Polyclonal Antibody (SPC-792) at 1:1000 for 2 hours at RT with shaking. Secondary Antibody: Goat Anti-Rabbit IgG: HRP at 1:3000 for 1 hour at RT. Color Development: ECL solution for 5 min at RT. Predicted/Observed Size: 27.3 kDa. Other Band(s): 25 kDa.



Immunohistochemistry analysis using Rabbit Anti-PDGFB Polyclonal Antibody (SPC-792). Tissue: Heart. Species: Human. Fixation: Formalin Fixed Paraffin-Embedded. Primary Antibody: Rabbit Anti-PDGFB Polyclonal Antibody (SPC-792) at 1:50 for 30 min at RT. Counterstain: Hematoxylin. Magnification: 10X. HRP-DAB Detection. | Western blot analysis of Mouse Brain showing detection of 27.3 kDa PDGFB protein using Rabbit Anti-PDGFB Polyclonal Antibody (SPC-792). Load: 15 µg. Block: 5% Skim Milk powder in TBST. Primary Antibody: Rabbit Anti-PDGFB Polyclonal Antibody (SPC-792) at 1:1000 for 2 hours at RT with shaking. Secondary Antibody: Goat Anti-Rabbit IgG:

HRP at 1:3000 for 1 hour at RT. Color Development: ECL solution for 5 min at RT.  
Predicted/Observed Size: 27.3 kDa. Other Band(s): 25 kDa.