

FOXO1 Antibody
Rabbit Anti-Human FOXO1 Polyclonal
Catalog # ASM10639**Specification**

FOXO1 Antibody - Product Information

Application	IHC
Primary Accession	Q12778
Other Accession	NP_002006.2
Host	Rabbit
Reactivity	Rat
Clonality	Polyclonal
Format	FOXO1
Target/Specificity	
FOXO1	

Other Names

FOXO1 Antibody, Forkhead in rhabdomyosarcoma Antibody, Forkhead box protein O1 Antibody, FKHR Antibody, Forkhead box protein O1A Antibody, FOXO1A Antibody

Immunogen

Synthetic peptide from the mid-protein of Human Forkhead box protein O1 (aa. 410-520)

Purification

Peptide Affinity Purified

Storage **-20°C**

Storage Buffer

PBS pH 7.4, 50% glycerol, 0.09% sodium azide *Storage buffer may change when conjugated

Shipping Temperature

Blue Ice or 4°C

Certificate of Analysis

A 1:1000 dilution of SPC-790 was sufficient for detection of FOXO1 in 15 µg of rat Liver cell lysates by ECL immunoblot analysis using goat anti-rabbit IgG:HRP as the secondary antibody.

Cellular Localization

Cytoplasm | Nucleus

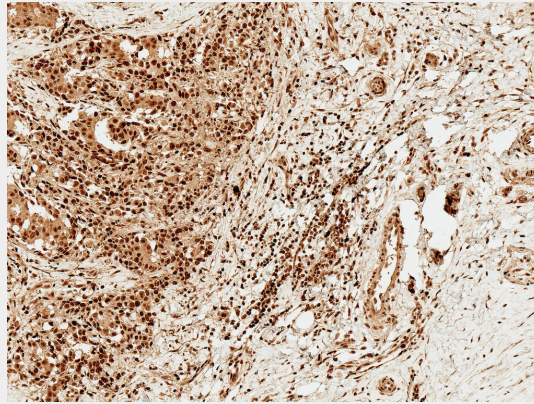
FOXO1 Antibody - Protocols

Provided below are standard protocols that you may find useful for product applications.

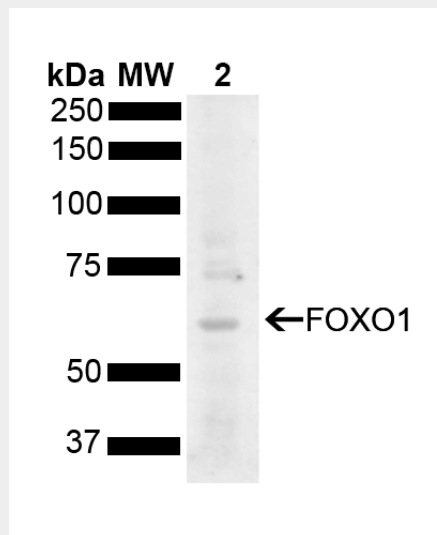
- [Western Blot](#)
- [Blocking Peptides](#)
- [Dot Blot](#)
- [Immunohistochemistry](#)
- [Immunofluorescence](#)
- [Immunoprecipitation](#)
- [Flow Cytometry](#)

- [Cell Culture](#)

FOXO1 Antibody - Images



Immunohistochemistry analysis using Rabbit Anti-FOXO1 Polyclonal Antibody (SPC-790). Tissue: Breast Cancer. Species: Human. Fixation: Formalin Fixed Paraffin-Embedded. Primary Antibody: Rabbit Anti-FOXO1 Polyclonal Antibody (SPC-790) at 1:50 for 30 min at RT. Counterstain: Hematoxylin. Localization: Cytoplasm, Nucleus. Magnification: 10X. HRP-DAB Detection. | Western blot analysis of Rat Liver showing detection of 69.7 kDa FOXO1 protein using Rabbit Anti-FOXO1 Polyclonal Antibody (SPC-790). Load: 15 μ g. Block: 5% Skim Milk powder in TBST. Primary Antibody: Rabbit Anti-FOXO1 Polyclonal Antibody (SPC-790) at 1:1000 for 2 hours at RT with shaking. Secondary Antibody: Goat Anti-Rabbit IgG: HRP at 1:5000 for 1 hour at RT. Color Development: ECL solution for 5 min at RT. Predicted/Observed Size: 69.7 kDa. Other Band(s): 75 kDa.



Immunohistochemistry analysis using Rabbit Anti-FOXO1 Polyclonal Antibody (SPC-790). Tissue: Breast Cancer. Species: Human. Fixation: Formalin Fixed Paraffin-Embedded. Primary Antibody: Rabbit Anti-FOXO1 Polyclonal Antibody (SPC-790) at 1:50 for 30 min at RT. Counterstain: Hematoxylin. Localization: Cytoplasm, Nucleus. Magnification: 10X. HRP-DAB Detection. | Western blot analysis of Rat Liver showing detection of 69.7 kDa FOXO1 protein using Rabbit Anti-FOXO1 Polyclonal Antibody (SPC-790). Load: 15 μ g. Block: 5% Skim Milk powder in TBST. Primary Antibody: Rabbit Anti-FOXO1 Polyclonal Antibody (SPC-790) at 1:1000 for 2 hours at RT with shaking. Secondary Antibody: Goat Anti-Rabbit IgG: HRP at 1:5000 for 1 hour at RT. Color Development: ECL solution for 5 min at RT. Predicted/Observed Size: 69.7 kDa. Other Band(s): 75 kDa.