

AKT Antibody
Rabbit Anti-Human AKT1 Polyclonal
Catalog # ASM10638

Specification

AKT Antibody - Product Information

Application	IHC
Primary Accession	P31749
Other Accession	NP_001014431.1
Host	Rabbit
Reactivity	Rat
Clonality	Polyclonal
Format	AKT1
Target/Specificity	
AKT1	

Other Names

RAC-alpha serine/threonine-protein kinase Antibody, Protein Kinase B Alpha Antibody, EC:2.7.11.1 Antibody, AKT1 Antibody, AKT Antibody, MGC99656 Antibody, PKB alpha Antibody, PKB-ALPHA Antibody, AKT 1 Antibody, RAC-PK-alpha Antibody, PRKBA Antibody, PKB Antibody, Protein kinase B alpha Antibody, Protein kinase B Antibody, Proto-oncogene c-Akt Antibody, AKT1_HUMAN Antibody, RAC Antibody, RAC Alpha Antibody

Immunogen

Synthetic peptide from the N-terminal of Human RAC-alpha serine/threonine-protein kinase (aa. 1-100)

Purification

Peptide Affinity Purified

Storage **-20°C**

Storage Buffer

PBS pH 7.4, 50% glycerol, 0.09% sodium azide *Storage buffer may change when conjugated

Shipping Temperature

Blue Ice or 4°C

Certificate of Analysis

A 1:1000 dilution of SPC-789 was sufficient for detection of AKT1 in 15 µg of rat Liver cell lysates by ECL immunoblot analysis using goat anti-rabbit IgG:HRP as the secondary antibody.

Cellular Localization

Cytoplasm | Nucleus | Cell Membrane

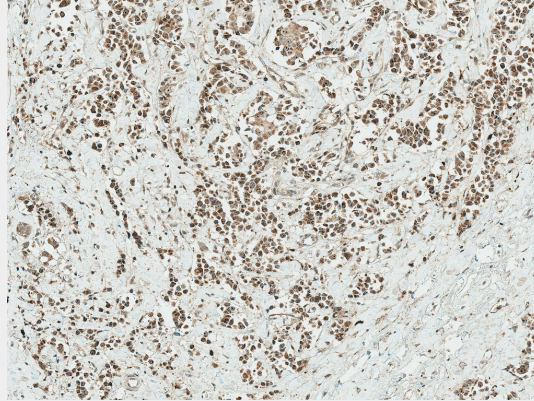
AKT Antibody - Protocols

Provided below are standard protocols that you may find useful for product applications.

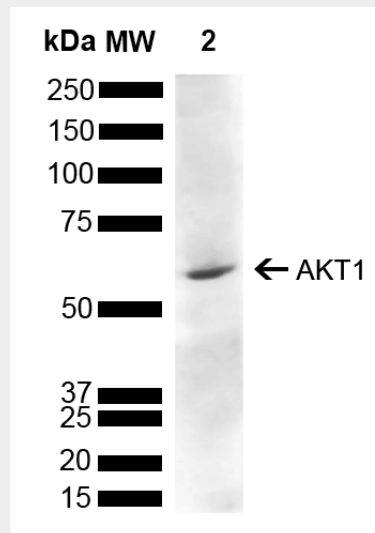
- [Western Blot](#)
- [Blocking Peptides](#)
- [Dot Blot](#)

- [Immunohistochemistry](#)
- [Immunofluorescence](#)
- [Immunoprecipitation](#)
- [Flow Cytometry](#)
- [Cell Culture](#)

AKT Antibody - Images



Immunohistochemistry analysis using Rabbit Anti-AKT Polyclonal Antibody (SPC-789). Tissue: Breast Cancer. Species: Human. Fixation: Formalin Fixed Paraffin-Embedded. Primary Antibody: Rabbit Anti-AKT Polyclonal Antibody (SPC-789) at 1:50 for 30 min at RT. Counterstain: Hematoxylin. Magnification: 10X. HRP-DAB Detection. | Western blot analysis of Rat Liver showing detection of 55.7 kDa AKT1 protein using Rabbit Anti-AKT1 Polyclonal Antibody (SPC-789). Load: 15 μ g. Block: 5% Skim Milk powder in TBST. Primary Antibody: Rabbit Anti-AKT1 Polyclonal Antibody (SPC-789) at 1:1000 for 2 hours at RT with shaking. Secondary Antibody: Goat Anti-Rabbit IgG: HRP at 1:5000 for 1 hour at RT. Color Development: ECL solution for 5 min at RT. Predicted/Observed Size: 55.7 kDa.



Immunohistochemistry analysis using Rabbit Anti-AKT Polyclonal Antibody (SPC-789). Tissue: Breast Cancer. Species: Human. Fixation: Formalin Fixed Paraffin-Embedded. Primary Antibody: Rabbit Anti-AKT Polyclonal Antibody (SPC-789) at 1:50 for 30 min at RT. Counterstain: Hematoxylin. Magnification: 10X. HRP-DAB Detection. | Western blot analysis of Rat Liver showing detection of 55.7 kDa AKT1 protein using Rabbit Anti-AKT1 Polyclonal Antibody (SPC-789). Load: 15 μ g. Block: 5% Skim Milk powder in TBST. Primary Antibody: Rabbit Anti-AKT1 Polyclonal Antibody (SPC-789) at 1:1000 for 2 hours at RT with shaking. Secondary Antibody: Goat

Anti-Rabbit IgG: HRP at 1:5000 for 1 hour at RT. Color Development: ECL solution for 5 min at RT.
Predicted/Observed Size: 55.7 kDa.