

PTEN Antibody
Rabbit Anti-Human PTEN Polyclonal
Catalog # ASM10637

Specification

PTEN Antibody - Product Information

Application	WB
Primary Accession	P60484
Other Accession	NP_000305.3
Host	Rabbit
Reactivity	Rat
Clonality	Polyclonal
Format	PTEN
Target/Specificity	
PTEN	

Other Names

PTEN_HUMAN Antibody, EC:3.1.3.67 Antibody, Pten Antibody, BZS Antibody, 5-trisphosphate 3-phosphatase and dual-specificity protein phosphatase PTEN Antibody, Phosphatidylinositol 3, 4, MMAC1 Antibody, Phosphatase and tensin homolog Antibody, Phosphatidylinositol-3, 4, 5-trisphosphate 3-phosphatase and dual-specificity protein phosphatase PTEN Antibody, MHAM Antibody, PTEN Antibody, EC:3.1.3.48, Mutated in multiple advanced cancers 1 Antibody, DEC Antibody, TEP1 Antibody, PTEN1 Antibody, Antibody, Phosphatase and tensin like protein Antibody, EC:3.1.3.16, GLM2 Antibody, MMAC1 phosphatase and tensin homolog deleted on chromosome 10 Antibody, MGC11227 Antibody, 10q23del Antibody

Immunogen

Synthetic peptide from the C-terminal of Human Phosphatidylinositol 3,4,5-trisphosphate 3-phosphatase and dual-specificity protein phosphatase (aa. 300-400)

Purification

Peptide Affinity Purified

Storage **-20°C**

Storage Buffer

PBS pH 7.4, 50% glycerol, 0.09% sodium azide *Storage buffer may change when conjugated

Shipping Temperature **Blue Ice or 4°C**

Certificate of Analysis

A 1:1000 dilution of SPC-788 was sufficient for detection of PTEN in 15 µg of rat Kidney, Liver cell lysates by ECL immunoblot analysis using goat anti-rabbit IgG:HRP as the secondary antibody.

Cellular Localization

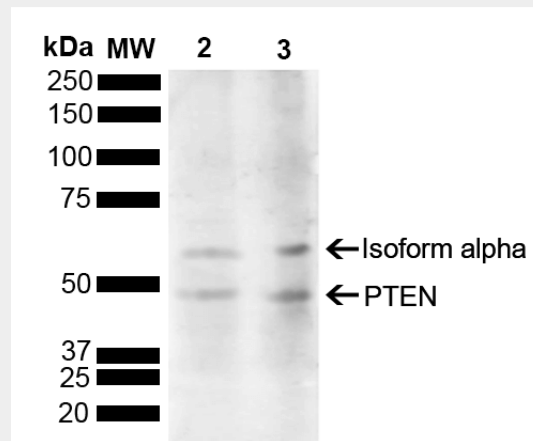
Cytoplasm | Nucleus | Nucleus | Pml Body

PTEN Antibody - Protocols

Provided below are standard protocols that you may find useful for product applications.

- [Western Blot](#)
- [Blocking Peptides](#)
- [Dot Blot](#)
- [Immunohistochemistry](#)
- [Immunofluorescence](#)
- [Immunoprecipitation](#)
- [Flow Cytometry](#)
- [Cell Culture](#)

PTEN Antibody - Images



Western blot analysis of Rat Kidney, Liver showing detection of 47.2 kDa PTEN protein using Rabbit Anti-PTEN Polyclonal Antibody (SPC-788). Load: 15 μ g. Block: 5% Skim Milk powder in TBST. Primary Antibody: Rabbit Anti-PTEN Polyclonal Antibody (SPC-788) at 1:1000 for 2 hours at RT with shaking. Secondary Antibody: Goat Anti-Rabbit IgG: HRP at 1:5000 for 1 hour at RT. Color Development: ECL solution for 5 min at RT. Predicted/Observed Size: 47.2 kDa. Other Band(s): 64 kDa.