

LRP1 Antibody
Rabbit Anti-Human LRP-1 Polyclonal
Catalog # ASM10634

Specification

LRP1 Antibody - Product Information

Application	IHC
Primary Accession	Q07954
Other Accession	NP_002323.2
Host	Rabbit
Reactivity	Rat
Clonality	Polyclonal
Format	LRP-1
Target/Specificity	
LRP-1	

Other Names

LRPICD Antibody, APOER Antibody, LRP-85 Antibody, LRP1 Antibody, A2MR Antibody, APR Antibody, Alpha-2-macroglobulin receptor Antibody, Apolipoprotein E receptor Antibody, Prolow-density lipoprotein receptor-related protein 1 Antibody, LRP-515 Antibody, LRP-1 Antibody, CD_antigen: CD91 Antibody

Immunogen

Synthetic peptide from the N-terminal of Human Low-density lipoprotein receptor-related protein 1 (aa. 160-260)

Purification

Peptide Affinity Purified

Storage **-20°C**

Storage Buffer

PBS pH 7.4, 50% glycerol, 0.09% sodium azide *Storage buffer may change when conjugated

Shipping Temperature

Blue Ice or 4°C

Certificate of Analysis

A 1:1000 dilution of SPC-785 was sufficient for detection of LRP-1 in 15 µg of mouse Brain cell lysates by ECL immunoblot analysis using goat anti-rabbit IgG:HRP as the secondary antibody.

Cellular Localization

Cell Membrane | Single-Pass Type I Membrane Protein | Membrane | Coated Pit

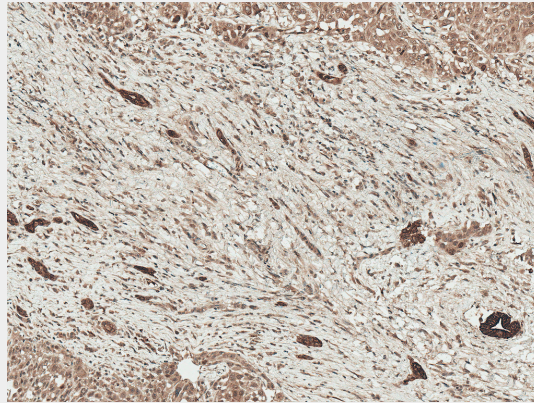
LRP1 Antibody - Protocols

Provided below are standard protocols that you may find useful for product applications.

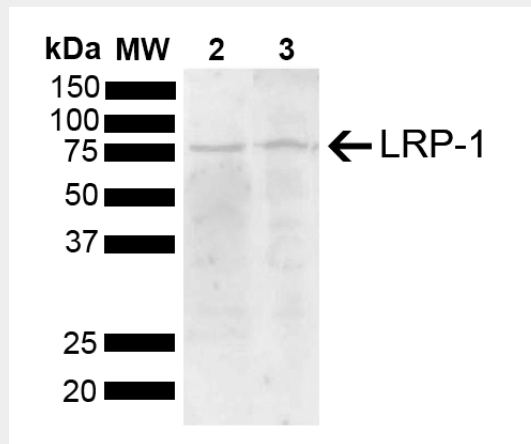
- [Western Blot](#)
- [Blocking Peptides](#)
- [Dot Blot](#)
- [Immunohistochemistry](#)

- [Immunofluorescence](#)
- [Immunoprecipitation](#)
- [Flow Cytometry](#)
- [Cell Culture](#)

LRP1 Antibody - Images



Immunohistochemistry analysis using Rabbit Anti-LRP1 Polyclonal Antibody (SPC-785). Tissue: Liver. Species: Human. Fixation: Formalin Fixed Paraffin-Embedded. Primary Antibody: Rabbit Anti-LRP1 Polyclonal Antibody (SPC-785) at 1:50 for 30 min at RT. Counterstain: Hematoxylin. Magnification: 10X. HRP-DAB Detection. | Western blot analysis of Mouse, Rat Brain showing detection of 504.6 kDa LRP-1 protein using Rabbit Anti-LRP-1 Polyclonal Antibody (SPC-785). Load: 15 μ g. Block: 5% Skim Milk powder in TBST. Primary Antibody: Rabbit Anti-LRP-1 Polyclonal Antibody (SPC-785) at 1:1000 for 2 hours at RT with shaking. Secondary Antibody: Goat Anti-Rabbit IgG: HRP at 1:5000 for 1 hour at RT. Color Development: ECL solution for 5 min at RT. Predicted/Observed Size: 504.6 kDa. Other Band(s): 80 kDa.



Immunohistochemistry analysis using Rabbit Anti-LRP1 Polyclonal Antibody (SPC-785). Tissue: Liver. Species: Human. Fixation: Formalin Fixed Paraffin-Embedded. Primary Antibody: Rabbit Anti-LRP1 Polyclonal Antibody (SPC-785) at 1:50 for 30 min at RT. Counterstain: Hematoxylin. Magnification: 10X. HRP-DAB Detection. | Western blot analysis of Mouse, Rat Brain showing detection of 504.6 kDa LRP-1 protein using Rabbit Anti-LRP-1 Polyclonal Antibody (SPC-785). Load: 15 μ g. Block: 5% Skim Milk powder in TBST. Primary Antibody: Rabbit Anti-LRP-1 Polyclonal Antibody (SPC-785) at 1:1000 for 2 hours at RT with shaking. Secondary Antibody: Goat Anti-Rabbit IgG: HRP at 1:5000 for 1 hour at RT. Color Development: ECL solution for 5 min at RT.

Predicted/Observed Size: 504.6 kDa. Other Band(s): 80 kDa.