

**LRP1 Antibody**  
**Rabbit Anti-Human LRP-1 Polyclonal**  
**Catalog # ASM10633**

**Specification**

---

**LRP1 Antibody - Product Information**

Application	<b>WB</b>
Primary Accession	<a href="#">O07954</a>
Other Accession	<a href="#">NP_002323.2</a>
Host	<b>Rabbit</b>
Reactivity	<b>Rat</b>
Clonality	<b>Polyclonal</b>
Format	<b>LRP-1</b>
<b>Target/Specificity</b>	
LRP-1	

**Other Names**

LRPICD Antibody, APOER Antibody, LRP-85 Antibody, LRP1 Antibody, A2MR Antibody, APR Antibody, Alpha-2-macroglobulin receptor Antibody, Apolipoprotein E receptor Antibody, Prolow-density lipoprotein receptor-related protein 1 Antibody, LRP-515 Antibody, LRP-1 Antibody, CD\_antigen: CD91 Antibody

**Immunogen**

Synthetic peptide from the mid-protein of Human Low-density lipoprotein receptor-related protein 1 (aa. 2880-2980)

**Purification**

Peptide Affinity Purified

Storage **-20°C**

**Storage Buffer**

PBS pH 7.4, 50% glycerol, 0.09% sodium azide \*Storage buffer may change when conjugated

Shipping Temperature **Blue Ice or 4°C**

**Certificate of Analysis**

A 1:1000 dilution of SPC-784 was sufficient for detection of LRP-1 in 15 µg of rat Kidney cell lysates by ECL immunoblot analysis using goat anti-rabbit IgG:HRP as the secondary antibody.

**Cellular Localization**

Cell Membrane | Single-Pass Type I Membrane Protein | Membrane | Coated Pit

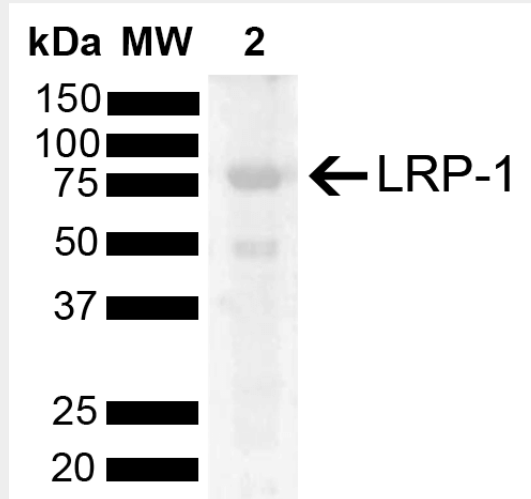
**LRP1 Antibody - Protocols**

Provided below are standard protocols that you may find useful for product applications.

- [Western Blot](#)
- [Blocking Peptides](#)
- [Dot Blot](#)
- [Immunohistochemistry](#)

- [Immunofluorescence](#)
- [Immunoprecipitation](#)
- [Flow Cytometry](#)
- [Cell Culture](#)

### LRP1 Antibody - Images



Western blot analysis of Rat Kidney showing detection of 504.6 kDa LRP-1 protein using Rabbit Anti-LRP-1 Polyclonal Antibody (SPC-784). Load: 15  $\mu$ g. Block: 5% Skim Milk powder in TBST. Primary Antibody: Rabbit Anti-LRP-1 Polyclonal Antibody (SPC-784) at 1:1000 for 2 hours at RT with shaking. Secondary Antibody: Goat Anti-Rabbit IgG: HRP at 1:5000 for 1 hour at RT. Color Development: ECL solution for 5 min at RT. Predicted/Observed Size: 504.6 kDa. Other Band(s): 80 kDa, 50 kDa.