

**WNT3 Antibody**  
**Rabbit Anti-Human WNT3 Polyclonal**  
**Catalog # ASM10632**

**Specification**

---

**WNT3 Antibody - Product Information**

Application	IHC
Primary Accession	<a href="#">P56703</a>
Other Accession	<a href="#">NP_110380.1</a>
Host	Rabbit
Clonality	Polyclonal
Format	WNT3
<b>Target/Specificity</b>	
WNT3	

**Other Names**

WNT 3 proto oncogene protein precursor Antibody, wingless type MMTV integration site family member 3 Antibody, Wnt 3 proto oncogene protein Antibody, MGC138321 Antibody, WNT3\_HUMAN Antibody, Proto-oncogene Int-4 homolog Antibody, MGC138323 Antibody, MGC131950 Antibody, INT4 Antibody, Proto-oncogene Wnt-3 Antibody, Int 4 Antibody, WNT3 Antibody, wnt3 Antibody

**Immunogen**

Synthetic peptide from the C-terminal of Human Proto-oncogene Wnt-3 (aa. 280-330)

**Purification**

Peptide Affinity Purified

Storage **-20°C**

**Storage Buffer**

PBS pH 7.4, 50% glycerol, 0.09% sodium azide \*Storage buffer may change when conjugated

Shipping Temperature

**Blue Ice or 4°C**

**Certificate of Analysis**

A 1:1000 dilution of SPC-783 was sufficient for detection of WNT3 in 15 µg of mouse Brain cell lysates by ECL immunoblot analysis using goat anti-rabbit IgG:HRP as the secondary antibody.

**Cellular Localization**

Secreted | Extracellular Space | Extracellular Matrix

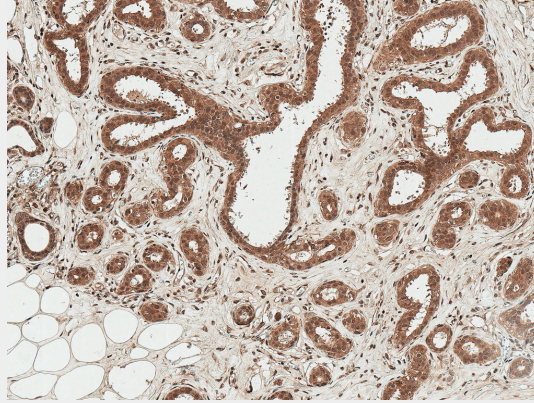
**WNT3 Antibody - Protocols**

Provided below are standard protocols that you may find useful for product applications.

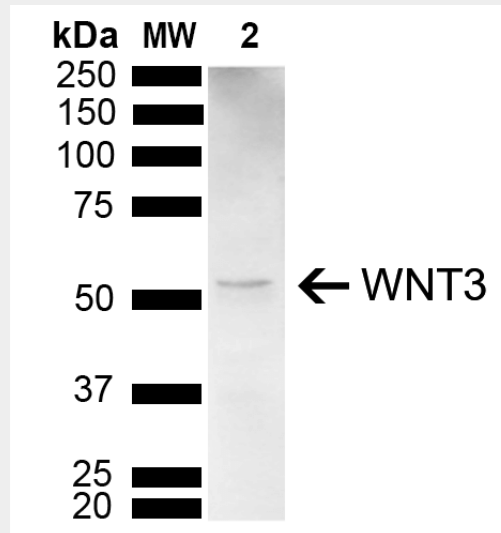
- [Western Blot](#)
- [Blocking Peptides](#)
- [Dot Blot](#)
- [Immunohistochemistry](#)
- [Immunofluorescence](#)

- [Immunoprecipitation](#)
- [Flow Cytometry](#)
- [Cell Culture](#)

**WNT3 Antibody - Images**



Immunohistochemistry analysis using Rabbit Anti-WNT3 Polyclonal Antibody (SPC-783). Tissue: Breast. Species: Human. Fixation: Formalin Fixed Paraffin-Embedded. Primary Antibody: Rabbit Anti-WNT3 Polyclonal Antibody (SPC-783) at 1:50 for 30 min at RT. Counterstain: Hematoxylin. Magnification: 10X. HRP-DAB Detection. | Western blot analysis of Mouse Brain showing detection of 39.6 kDa WNT3 protein using Rabbit Anti-WNT3 Polyclonal Antibody (SPC-783). Load: 15 µg. Block: 5% Skim Milk powder in TBST. Primary Antibody: Rabbit Anti-WNT3 Polyclonal Antibody (SPC-783) at 1:1000 for 2 hours at RT with shaking. Secondary Antibody: Goat Anti-Rabbit IgG: HRP at 1:5000 for 1 hour at RT. Color Development: ECL solution for 5 min at RT. Predicted/Observed Size: 39.6 kDa. Other Band(s): 50 kDa.



Immunohistochemistry analysis using Rabbit Anti-WNT3 Polyclonal Antibody (SPC-783). Tissue: Breast. Species: Human. Fixation: Formalin Fixed Paraffin-Embedded. Primary Antibody: Rabbit Anti-WNT3 Polyclonal Antibody (SPC-783) at 1:50 for 30 min at RT. Counterstain: Hematoxylin. Magnification: 10X. HRP-DAB Detection. | Western blot analysis of Mouse Brain showing detection of 39.6 kDa WNT3 protein using Rabbit Anti-WNT3 Polyclonal Antibody (SPC-783). Load: 15 µg. Block: 5% Skim Milk powder in TBST. Primary Antibody: Rabbit Anti-WNT3 Polyclonal Antibody (SPC-783) at 1:1000 for 2 hours at RT with shaking. Secondary Antibody: Goat Anti-Rabbit IgG: HRP at 1:5000 for 1 hour at RT. Color Development: ECL solution for 5 min at RT. Predicted/Observed Size: 39.6 kDa. Other Band(s): 50 kDa.