

PKC gamma Antibody
Rabbit Anti-Human PRKCG Polyclonal
Catalog # ASM10631

Specification

PKC gamma Antibody - Product Information

Application	IHC
Primary Accession	P05129
Other Accession	NP_001303258.1
Host	Rabbit
Reactivity	Rat
Clonality	Polyclonal
Format	PRKCG
Target/Specificity	
PRKCG	

Other Names

PRKCG Antibody, PRKCG Antibody, PKC-gamma Antibody, Protein kinase C gamma type Antibody, EC:2.7.11.13 Antibody

Immunogen

Synthetic peptide from the mid-protein of Human PRKCG (aa. 150-250)

Purification

Peptide Affinity Purified

Storage **-20°C**

Storage Buffer

PBS pH 7.4, 50% glycerol, 0.09% sodium azide *Storage buffer may change when conjugated

Shipping Temperature **Blue Ice or 4°C**

Certificate of Analysis

A 1:1000 dilution of SPC-782 was sufficient for detection of PRKCG in 15 µg of mouse Brain cell lysates by ECL immunoblot analysis using goat anti-rabbit IgG:HRP as the secondary antibody.

Cellular Localization

Cytoplasm | Cytoplasm | Perinuclear Region | Cell Membrane | Peripheral Membrane Protein | Cell Junction | Synapse | Synaptosome | Cell Projection | Dendrite

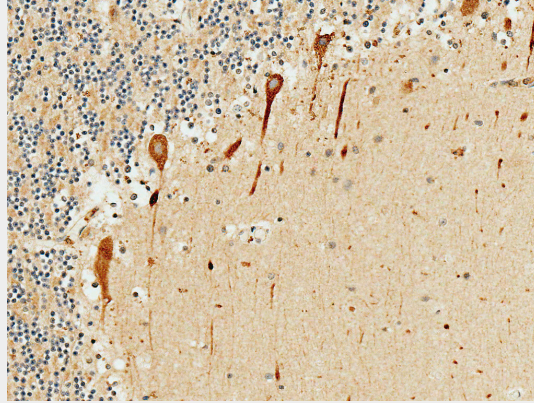
PKC gamma Antibody - Protocols

Provided below are standard protocols that you may find useful for product applications.

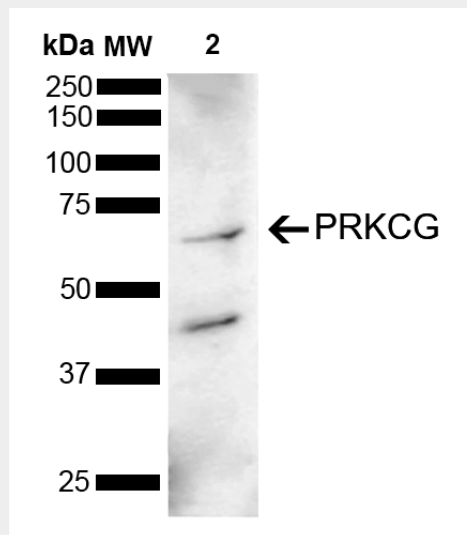
- [Western Blot](#)
- [Blocking Peptides](#)
- [Dot Blot](#)
- [Immunohistochemistry](#)
- [Immunofluorescence](#)
- [Immunoprecipitation](#)

- [Flow Cytometry](#)
- [Cell Culture](#)

PKC gamma Antibody - Images



Immunohistochemistry analysis using Rabbit Anti-PKC Gamma Polyclonal Antibody (SPC-782). Tissue: Cerebellum. Species: Human. Fixation: Formalin Fixed Paraffin-Embedded. Primary Antibody: Rabbit Anti-PKC Gamma Polyclonal Antibody (SPC-782) at 1:50 for 30 min at RT. Counterstain: Hematoxylin. Magnification: 20X. HRP-DAB Detection. | Western blot analysis of Mouse Brain showing detection of 78 kDa PRKCG protein using Rabbit Anti-PRKCG Polyclonal Antibody (SPC-782). Load: 15 µg. Block: 5% Skim Milk powder in TBST. Primary Antibody: Rabbit Anti-PRKCG Polyclonal Antibody (SPC-782) at 1:1000 for 2 hours at RT with shaking. Secondary Antibody: Goat Anti-Rabbit IgG: HRP at 1:5000 for 1 hour at RT. Color Development: ECL solution for 5 min at RT. Predicted/Observed Size: 78 kDa. Other Band(s): 62 kDa, 40 kDa.



Immunohistochemistry analysis using Rabbit Anti-PKC Gamma Polyclonal Antibody (SPC-782). Tissue: Cerebellum. Species: Human. Fixation: Formalin Fixed Paraffin-Embedded. Primary Antibody: Rabbit Anti-PKC Gamma Polyclonal Antibody (SPC-782) at 1:50 for 30 min at RT. Counterstain: Hematoxylin. Magnification: 20X. HRP-DAB Detection. | Western blot analysis of Mouse Brain showing detection of 78 kDa PRKCG protein using Rabbit Anti-PRKCG Polyclonal Antibody (SPC-782). Load: 15 µg. Block: 5% Skim Milk powder in TBST. Primary Antibody: Rabbit Anti-PRKCG Polyclonal Antibody (SPC-782) at 1:1000 for 2 hours at RT with shaking. Secondary Antibody: Goat Anti-Rabbit IgG: HRP at 1:5000 for 1 hour at RT. Color Development: ECL solution for 5 min at RT. Predicted/Observed Size: 78 kDa. Other Band(s): 62 kDa, 40 kDa.