

4EBP1 Antibody
Rabbit Anti-Human 4EBP1 Polyclonal
Catalog # ASM10630

Specification

4EBP1 Antibody - Product Information

Application	IHC
Primary Accession	O13541
Other Accession	NP_004086.1
Host	Rabbit
Clonality	Polyclonal
Format	4EBP1
Target/Specificity	
4EBP1	

Other Names

eIF4E-binding protein 1 Antibody, EIF4EBP1 Antibody, Eukaryotic translation initiation factor 4E-binding protein 1 Antibody, 4E-BP1 Antibody, PHAS-I Antibody, Phosphorylated heat- and acid-stable protein regulated by insulin 1 Antibody

Immunogen

Synthetic peptide from the mid-protein of Human 4EBP1 (aa. 50-80)

Purification

Peptide Affinity Purified

Storage **-20°C**

Storage Buffer

PBS pH 7.4, 50% glycerol, 0.09% sodium azide *Storage buffer may change when conjugated

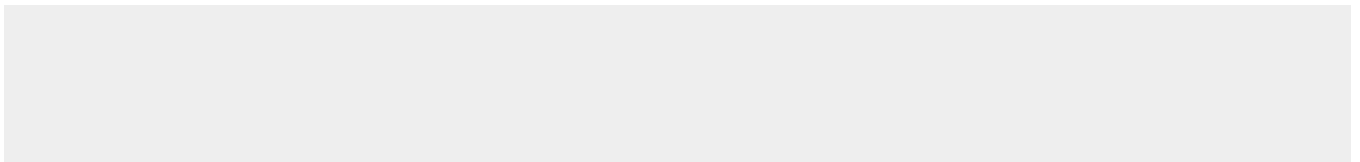
Shipping Temperature **Blue Ice or 4°C**

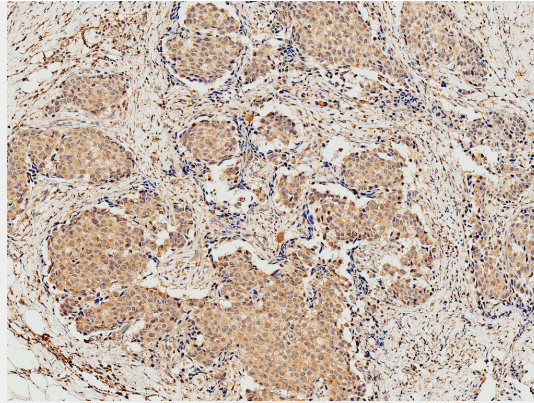
4EBP1 Antibody - Protocols

Provided below are standard protocols that you may find useful for product applications.

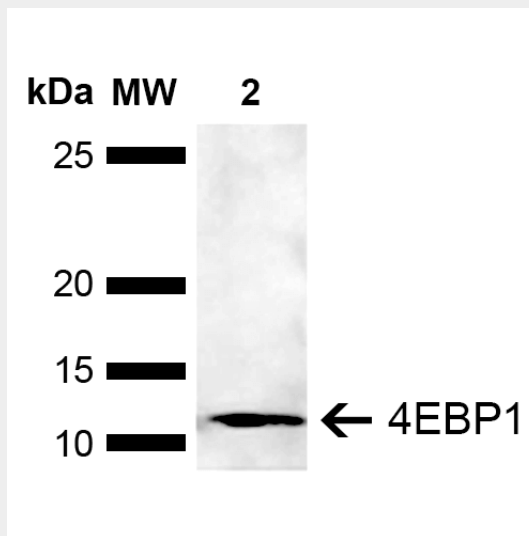
- [Western Blot](#)
- [Blocking Peptides](#)
- [Dot Blot](#)
- [Immunohistochemistry](#)
- [Immunofluorescence](#)
- [Immunoprecipitation](#)
- [Flow Cytometry](#)
- [Cell Culture](#)

4EBP1 Antibody - Images





Immunohistochemistry analysis using Rabbit Anti-4EBP1 Polyclonal Antibody (SPC-781). Tissue: Breast Cancer. Species: Human. Fixation: Formalin Fixed Paraffin-Embedded. Primary Antibody: Rabbit Anti-4EBP1 Polyclonal Antibody (SPC-781) at 1:50 for 30 min at RT. Counterstain: Hematoxylin. Localization: Cytoplasm. Magnification: 10X. HRP-DAB Detection. | Western blot analysis of Human Embryonic kidney epithelial cell line (HEK293T) lysate showing detection of ~12.6 kDa 4EBP1 protein using Rabbit Anti-4EBP1 Polyclonal Antibody (SPC-781). Lane 1: Molecular Weight Ladder (MW). Lane 2: HEK293T. Load: 10 µg. Block: 5% Skim Milk in 1X TBST. Primary Antibody: Rabbit Anti-4EBP1 Polyclonal Antibody (SPC-781) at 1:500 for 2 hours at RT. Secondary Antibody: Goat Anti-Rabbit IgG: HRP at 1:4000 for 1 hour at RT. Color Development: ECL solution for 5 min at RT. Predicted/Observed Size: ~12.6 kDa.



Immunohistochemistry analysis using Rabbit Anti-4EBP1 Polyclonal Antibody (SPC-781). Tissue: Breast Cancer. Species: Human. Fixation: Formalin Fixed Paraffin-Embedded. Primary Antibody: Rabbit Anti-4EBP1 Polyclonal Antibody (SPC-781) at 1:50 for 30 min at RT. Counterstain: Hematoxylin. Localization: Cytoplasm. Magnification: 10X. HRP-DAB Detection. | Western blot analysis of Human Embryonic kidney epithelial cell line (HEK293T) lysate showing detection of ~12.6 kDa 4EBP1 protein using Rabbit Anti-4EBP1 Polyclonal Antibody (SPC-781). Lane 1: Molecular Weight Ladder (MW). Lane 2: HEK293T. Load: 10 µg. Block: 5% Skim Milk in 1X TBST. Primary Antibody: Rabbit Anti-4EBP1 Polyclonal Antibody (SPC-781) at 1:500 for 2 hours at RT. Secondary Antibody: Goat Anti-Rabbit IgG: HRP at 1:4000 for 1 hour at RT. Color Development: ECL solution for 5 min at RT. Predicted/Observed Size: ~12.6 kDa.