

ERK1 Antibody
Rabbit Anti-Human ERK1 Polyclonal
Catalog # ASM10629**Specification**

ERK1 Antibody - Product Information

Application	WB
Primary Accession	P27361
Other Accession	NP_001035145.1
Host	Rabbit
Reactivity	Rat
Clonality	Polyclonal
Format	ERK1
Target/Specificity	
ERK1	

Other Names

Extracellular Signal Regulated Kinase 1 Antibody, Mapk3 Antibody, MGC20180 Antibody, ERT 2 Antibody, MAP kinase isoform p44 Antibody, p44 ERK1 Antibody, ERK Antibody, Microtubule Associated Protein 2 Kinase Antibody, Protein Kinase Mitogen Activated 3 Antibody, p44-MAPK Antibody, MAPK 3 Antibody, OTTHUMP00000174541 Antibody, HS44KDAP Antibody, ERK 1 Antibody, PRKM 3 Antibody, MK03_HUMAN Antibody, OTTHUMP00000174538 Antibody, EC:2.7.11.24 Antibody, ERT2 Antibody, Mitogen-activated protein kinase 1 Antibody, Extracellular signal related kinase 1 Antibody, MAP kinase 1 Antibody, Mitogen-activated protein kinase 3 Antibody, Microtubule-associated protein 2 kinase Antibody, Extracellular signal-regulated kinase 1 Antibody, PRKM3 Antibody, Mitogen Activated Protein Kinase 3 Antibody, HUMKER1A Antibody, p44-ERK1 Antibody, Insulin Stimulated MAP2 Kinase Antibody, MAP Kinase Antibody, ERK1 Antibody, MAP kinase 3 Antibody, MAPK Antibody, P44ERK1 Antibody, HGNC6877 Antibody, p44 MAPK Antibody, P44MAPK Antibody, MAPK 1 Antibody, Insulin-stimulated MAP2 kinase Antibody, MAPK1 Antibody, MAPK3 Antibody, ERK-1 Antibody

Immunogen

Synthetic peptide from the C-terminal of Human ERK1 (aa. 270-379)

Purification

Peptide Affinity Purified

Storage **-20°C**

Storage Buffer

PBS pH 7.4, 50% glycerol, 0.09% sodium azide *Storage buffer may change when conjugated

Shipping Temperature

Blue Ice or 4°C

Cellular Localization

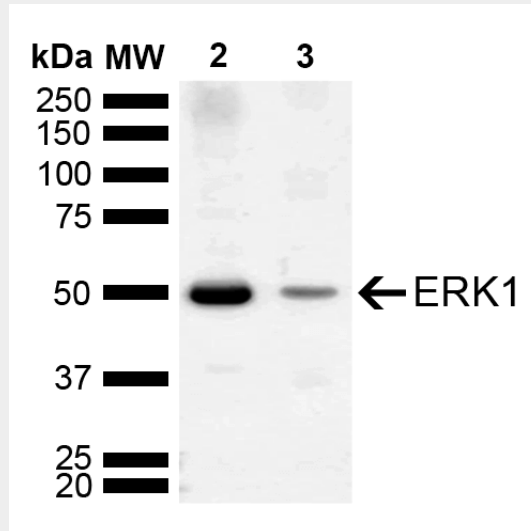
Cytoplasm | Nucleus

ERK1 Antibody - Protocols

Provided below are standard protocols that you may find useful for product applications.

- [Western Blot](#)
- [Blocking Peptides](#)
- [Dot Blot](#)
- [Immunohistochemistry](#)
- [Immunofluorescence](#)
- [Immunoprecipitation](#)
- [Flow Cytometry](#)
- [Cell Culture](#)

ERK1 Antibody - Images



Western blot analysis of Mouse, Rat Brain showing detection of ~43.1, 38.2, 40.1 kDa ERK1 protein using Rabbit Anti-ERK1 Polyclonal Antibody (SPC-780). Lane 1: Molecular Weight Ladder (MW). Lane 2: Mouse Brain. Lane 3: Rat Brain. Load: 15 μ g. Block: 5% Skim Milk in 1X TBST. Primary Antibody: Rabbit Anti-ERK1 Polyclonal Antibody (SPC-780) at 1:1000 for 2 hours at RT. Secondary Antibody: Goat Anti-Rabbit IgG: HRP at 1:5000 for 1 hour at RT. Color Development: ECL solution for 5 min at RT. Predicted/Observed Size: ~43.1, 38.2, 40.1 kDa. Other Band(s): 50 kDa.