

**MDM2 Antibody**  
**Rabbit Anti-Human MDM2 Polyclonal**  
**Catalog # ASM10627****Specification**

---

**MDM2 Antibody - Product Information**

Application	IHC
Primary Accession	<a href="#">Q00987</a>
Other Accession	<a href="#">NP_001138811.1</a>
Host	Rabbit
Reactivity	Rat
Clonality	Polyclonal
Format	MDM2
<b>Target/Specificity</b>	
MDM2	

**Other Names**

Double minute 2 protein Antibody, Hdm2 Antibody, MTBP Antibody, Mouse Double Minute 2 Antibody, HDMX Antibody, ACTFS Antibody, p53 Binding Protein Mdm2 Antibody, Ubiquitin protein ligase E3 Mdm2 Antibody, Mdm2 p53 E3 ubiquitin protein ligase homolog Antibody, MDM2BP Antibody, p53-binding protein Mdm2 Antibody, Oncoprotein Mdm2 Antibody, Hdm 2 Antibody, E3 ubiquitin-protein ligase Mdm2 Antibody, MDM 2 Antibody, EC:6.3.2.- Antibody, MDM2\_HUMAN Antibody, MDM2 oncogene E3 ubiquitin protein ligase Antibody, Murine Double Minute Chromosome 2 Antibody, Mdm2 transformed 3T3 cell double minute 2 p53 binding protein (mouse) binding protein 104kDa Antibody, MDM2 Antibody

**Immunogen**

Synthetic peptide from the mid-protein of Human MDM2 (aa. 100-200)

**Purification**

Peptide Affinity Purified

Storage **-20°C**

**Storage Buffer**

PBS pH 7.4, 50% glycerol, 0.09% sodium azide \*Storage buffer may change when conjugated

Shipping Temperature **Blue Ice or 4°C**

**Cellular Localization**

Nucleus | Nucleoplasm | Cytoplasm | Nucleus | Nucleolus

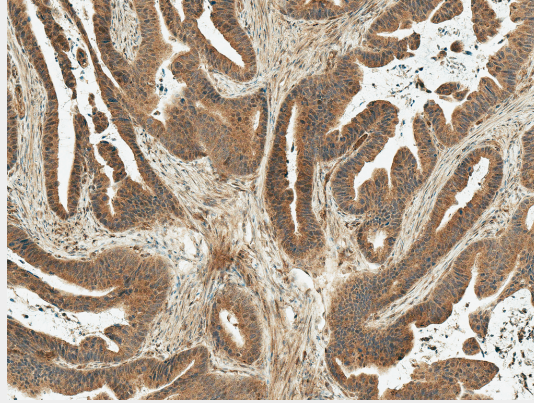
**MDM2 Antibody - Protocols**

Provided below are standard protocols that you may find useful for product applications.

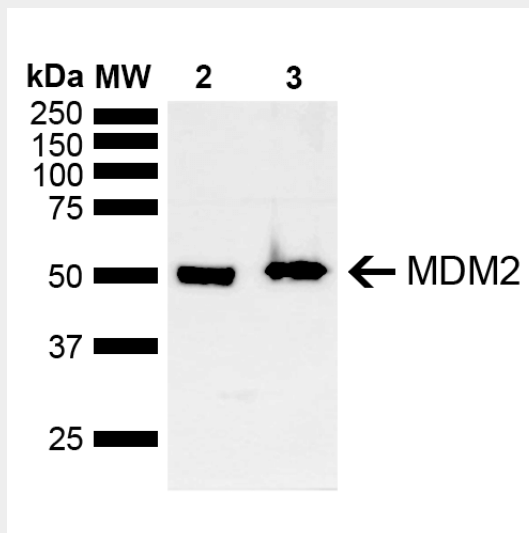
- [Western Blot](#)
- [Blocking Peptides](#)
- [Dot Blot](#)
- [Immunohistochemistry](#)
- [Immunofluorescence](#)

- [Immunoprecipitation](#)
- [Flow Cytometry](#)
- [Cell Culture](#)

**MDM2 Antibody - Images**



Immunohistochemistry analysis using Rabbit Anti-MDM2 Polyclonal Antibody (SPC-778). Tissue: Stomach Cancer. Species: Human. Fixation: Formalin Fixed Paraffin-Embedded. Primary Antibody: Rabbit Anti-MDM2 Polyclonal Antibody (SPC-778) at 1:50 for 30 min at RT. Counterstain: Hematoxylin. Magnification: 10X. HRP-DAB Detection. | Western blot analysis of Mouse, Rat Brain showing detection of ~40 kDa MDM2 protein using Rabbit Anti-MDM2 Polyclonal Antibody (SPC-778). Lane 1: Molecular Weight Ladder (MW). Lane 2: Mouse Brain. Lane 3: Rat Brain. Load: 15 µg. Block: 5% Skim Milk in 1X TBST. Primary Antibody: Rabbit Anti-MDM2 Polyclonal Antibody (SPC-778) at 1:1000 for 2 hours at RT. Secondary Antibody: Goat Anti-Rabbit IgG: HRP at 1:5000 for 1 hour at RT. Color Development: ECL solution for 5 min at RT. Predicted/Observed Size: ~40 kDa. Other Band(s): Isoform 2 or 3.



Immunohistochemistry analysis using Rabbit Anti-MDM2 Polyclonal Antibody (SPC-778). Tissue: Stomach Cancer. Species: Human. Fixation: Formalin Fixed Paraffin-Embedded. Primary Antibody: Rabbit Anti-MDM2 Polyclonal Antibody (SPC-778) at 1:50 for 30 min at RT. Counterstain: Hematoxylin. Magnification: 10X. HRP-DAB Detection. | Western blot analysis of Mouse, Rat Brain showing detection of ~40 kDa MDM2 protein using Rabbit Anti-MDM2 Polyclonal Antibody (SPC-778). Lane 1: Molecular Weight Ladder (MW). Lane 2: Mouse Brain. Lane 3: Rat Brain. Load: 15 µg. Block: 5% Skim Milk in 1X TBST. Primary Antibody: Rabbit Anti-MDM2 Polyclonal Antibody (SPC-778) at 1:1000 for 2 hours at RT. Secondary Antibody: Goat Anti-Rabbit IgG: HRP at 1:5000

for 1 hour at RT. Color Development: ECL solution for 5 min at RT. Predicted/Observed Size: ~40 kDa. Other Band(s): Isoform 2 or 3.