

**KRAS Antibody**  
**Rabbit Anti-Human KRAS Polyclonal**  
**Catalog # ASM10626**

**Specification**

---

**KRAS Antibody - Product Information**

Application	<b>WB</b>
Primary Accession	<a href="#">P01116</a>
Other Accession	<a href="#">NP_004976.2</a>
Host	<b>Rabbit</b>
Reactivity	<b>Rat</b>
Clonality	<b>Polyclonal</b>
Format	<b>KRAS</b>
<b>Target/Specificity</b>	
KRAS	

**Other Names**

Transforming protein p21 Antibody, c-Ki-ras Antibody, K RAS4A Antibody, v Ki ras2 Kirsten rat sarcoma viral oncogene homolog Antibody, PR310 cK ras oncogene Antibody, Oncogene KRAS2 Antibody, KRAS Antibody, KRAS1 Antibody, RASK2 Antibody, K RAS2A Antibody, K RAS p21 protein Antibody, GTPase KRas Antibody, c-K-ras Antibody, K-Ras 2 Antibody, KRAS2 Antibody, c Kirsten ras protein Antibody, K RAS2B Antibody, p21ras Antibody, Cellular c Ki ras2 proto oncogene Antibody, Kirsten rat sarcoma 2 viral (v Ki ras2) oncogene homolog Antibody, Ki-Ras Antibody, RASK\_HUMAN Antibody, KI RAS Antibody, NS3 Antibody, K RAS4B Antibody, cK Ras Antibody, KIRSTEN MURINE SARCOMA VIRUS 2 Antibody, NS Antibody, N-terminally processed Antibody

**Immunogen**

Synthetic peptide from the C-terminal of Human KRAS (aa. 100-189)

**Purification**

Peptide Affinity Purified

Storage **-20°C**

**Storage Buffer**

PBS pH 7.4, 50% glycerol, 0.09% sodium azide \*Storage buffer may change when conjugated

Shipping Temperature **Blue Ice or 4°C**

**Cellular Localization**

Cell Membrane | Lipid-Anchor | Cytoplasmic Side | Cytoplasm | Cytosol

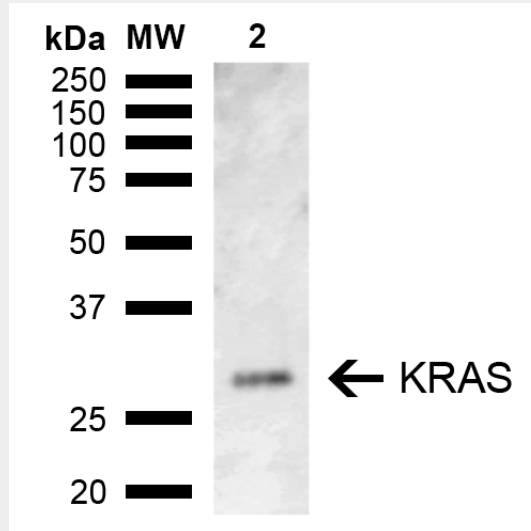
**KRAS Antibody - Protocols**

Provided below are standard protocols that you may find useful for product applications.

- [Western Blot](#)
- [Blocking Peptides](#)
- [Dot Blot](#)
- [Immunohistochemistry](#)
- [Immunofluorescence](#)

- [Immunoprecipitation](#)
- [Flow Cytometry](#)
- [Cell Culture](#)

### KRAS Antibody - Images



Western blot analysis of Rat Kidney showing detection of ~21.6 kDa KRAS protein using Rabbit Anti-KRAS Polyclonal Antibody (SPC-777). Lane 1: Molecular Weight Ladder (MW). Lane 2: Rat Kidney. Load: 15 µg. Block: 5% Skim Milk in 1X TBST. Primary Antibody: Rabbit Anti-KRAS Polyclonal Antibody (SPC-777) at 1:1000 for 2 hours at RT. Secondary Antibody: Goat Anti-Rabbit IgG: HRP at 1:5000 for 1 hour at RT. Color Development: ECL solution for 5 min at RT. Predicted/Observed Size: ~21.6 kDa. Other Band(s): ~29 kDa (PTM).