

**CDKN2A Antibody**  
**Rabbit Anti-Human CDKN2A Polyclonal**  
**Catalog # ASM10624**

**Specification**

---

**CDKN2A Antibody - Product Information**

Application	<b>WB</b>
Primary Accession	<a href="#">P42771</a>
Other Accession	<a href="#">NP_000068.1</a>
Host	<b>Rabbit</b>
Reactivity	<b>Rat</b>
Clonality	<b>Polyclonal</b>
Format	<b>CDKN2A</b>
<b>Target/Specificity</b>	
CDKN2A	

**Other Names**

Cyclin-dependent kinase 4 inhibitor A Antibody, MTS-1 Antibody, Multiple tumor suppressor 1 Antibody, MTS1 Antibody, p16-INK4a Antibody, p16INK4A Antibody, CDKN2 Antibody, CDK4I Antibody, Cyclin-dependent kinase inhibitor 2A Antibody, p16-INK4 Antibody, CDKN2A Antibody

**Immunogen**

Synthetic peptide from the mid-protein of Human CDKN2A (aa. 30-90)

**Purification**

Peptide Affinity Purified

Storage **-20°C**

**Storage Buffer**

PBS pH 7.4, 50% glycerol, 0.09% sodium azide \*Storage buffer may change when conjugated

Shipping Temperature

**Blue Ice or 4°C**

**Cellular Localization**

Cytoplasm | Nucleus

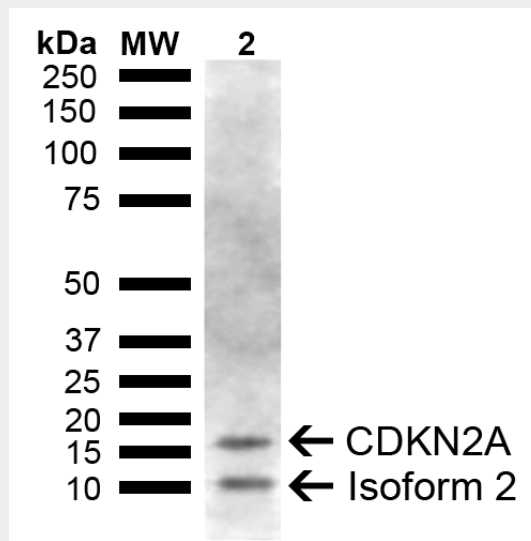
**CDKN2A Antibody - Protocols**

Provided below are standard protocols that you may find useful for product applications.

- [Western Blot](#)
- [Blocking Peptides](#)
- [Dot Blot](#)
- [Immunohistochemistry](#)
- [Immunofluorescence](#)
- [Immunoprecipitation](#)
- [Flow Cytometry](#)
- [Cell Culture](#)

**CDKN2A Antibody - Images**

---



Western blot analysis of Mouse Liver showing detection of ~16.5, 11.2 kDa CDKN2A protein using Rabbit Anti-CDKN2A Polyclonal Antibody (SPC-775). Lane 1: Molecular Weight Ladder (MW). Lane 2: Mouse Liver. Load: 15  $\mu$ g. Block: 5% Skim Milk in 1X TBST. Primary Antibody: Rabbit Anti-CDKN2A Polyclonal Antibody (SPC-775) at 1:1000 for 2 hours at RT. Secondary Antibody: Goat Anti-Rabbit IgG: HRP at 1:5000 for 1 hour at RT. Color Development: ECL solution for 5 min at RT. Predicted/Observed Size: ~16.5, 11.2 kDa.