

**BAD Antibody**  
**Rabbit Anti-Human BAD Polyclonal**  
**Catalog # ASM10623**

**Specification**

---

**BAD Antibody - Product Information**

Application	IHC
Primary Accession	<a href="#">O92934</a>
Other Accession	<a href="#">NP_004313.1</a>
Host	Rabbit
Clonality	Polyclonal
Format	BAD
<b>Target/Specificity</b>	
BAD	

**Other Names**

Bcl2 antagonist of cell death Antibody, BAD Antibody, Bcl2-L-8 Antibody, Bcl-xL/Bcl-2-associated death promoter Antibody, Bcl2-associated agonist of cell death Antibody, Bcl-2-binding component 6 Antibody, BBC6 Antibody, BCL2L8 Antibody, Bcl-2-like protein 8 Antibody

**Immunogen**

Synthetic peptide from the C-terminal of Human BAD (aa. 130-168)

**Purification**

Peptide Affinity Purified

Storage **-20°C**

**Storage Buffer**

PBS pH 7.4, 50% glycerol, 0.09% sodium azide \*Storage buffer may change when conjugated

Shipping Temperature **Blue Ice or 4°C**

**Cellular Localization**

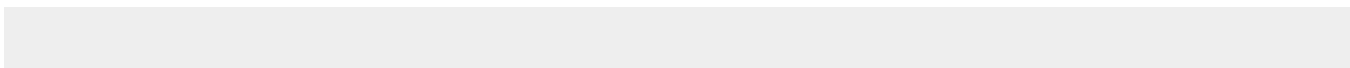
Mitochondrion Outer Membrane | Cytoplasm

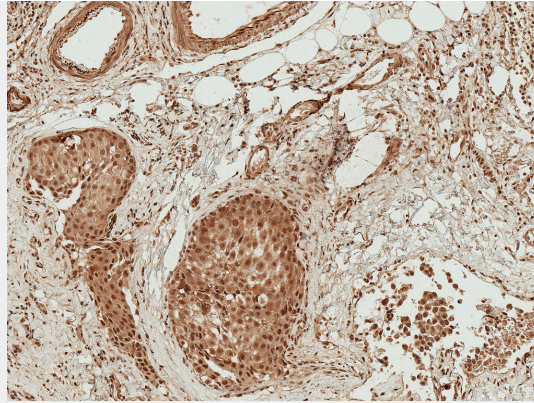
**BAD Antibody - Protocols**

Provided below are standard protocols that you may find useful for product applications.

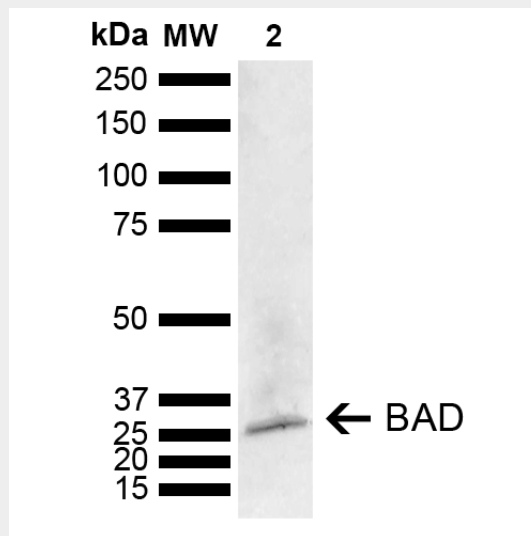
- [Western Blot](#)
- [Blocking Peptides](#)
- [Dot Blot](#)
- [Immunohistochemistry](#)
- [Immunofluorescence](#)
- [Immunoprecipitation](#)
- [Flow Cytometry](#)
- [Cell Culture](#)

**BAD Antibody - Images**





Immunohistochemistry analysis using Rabbit Anti-BAD Polyclonal Antibody (SPC-774). Tissue: Breast Cancer. Species: Human. Fixation: Formalin Fixed Paraffin-Embedded. Primary Antibody: Rabbit Anti-BAD Polyclonal Antibody (SPC-774) at 1:50 for 30 min at RT. Counterstain: Hematoxylin. Magnification: 10X. HRP-DAB Detection. | Western blot analysis of Mouse Brain showing detection of ~18.3 kDa BAD protein using Rabbit Anti-BAD Polyclonal Antibody (SPC-774). Lane 1: Molecular Weight Ladder (MW). Lane 2: Mouse Brain. Load: 15 µg. Block: 5% Skim Milk in 1X TBST. Primary Antibody: Rabbit Anti-BAD Polyclonal Antibody (SPC-774) at 1:1000 for 2 hours at RT. Secondary Antibody: Goat Anti-Rabbit IgG: HRP at 1:5000 for 1 hour at RT. Color Development: ECL solution for 5 min at RT. Predicted/Observed Size: ~18.3 kDa. Other Band(s): ~25 kDa (PTM).



Immunohistochemistry analysis using Rabbit Anti-BAD Polyclonal Antibody (SPC-774). Tissue: Breast Cancer. Species: Human. Fixation: Formalin Fixed Paraffin-Embedded. Primary Antibody: Rabbit Anti-BAD Polyclonal Antibody (SPC-774) at 1:50 for 30 min at RT. Counterstain: Hematoxylin. Magnification: 10X. HRP-DAB Detection. | Western blot analysis of Mouse Brain showing detection of ~18.3 kDa BAD protein using Rabbit Anti-BAD Polyclonal Antibody (SPC-774). Lane 1: Molecular Weight Ladder (MW). Lane 2: Mouse Brain. Load: 15 µg. Block: 5% Skim Milk in 1X TBST. Primary Antibody: Rabbit Anti-BAD Polyclonal Antibody (SPC-774) at 1:1000 for 2 hours at RT. Secondary Antibody: Goat Anti-Rabbit IgG: HRP at 1:5000 for 1 hour at RT. Color Development: ECL solution for 5 min at RT. Predicted/Observed Size: ~18.3 kDa. Other Band(s): ~25 kDa (PTM).